



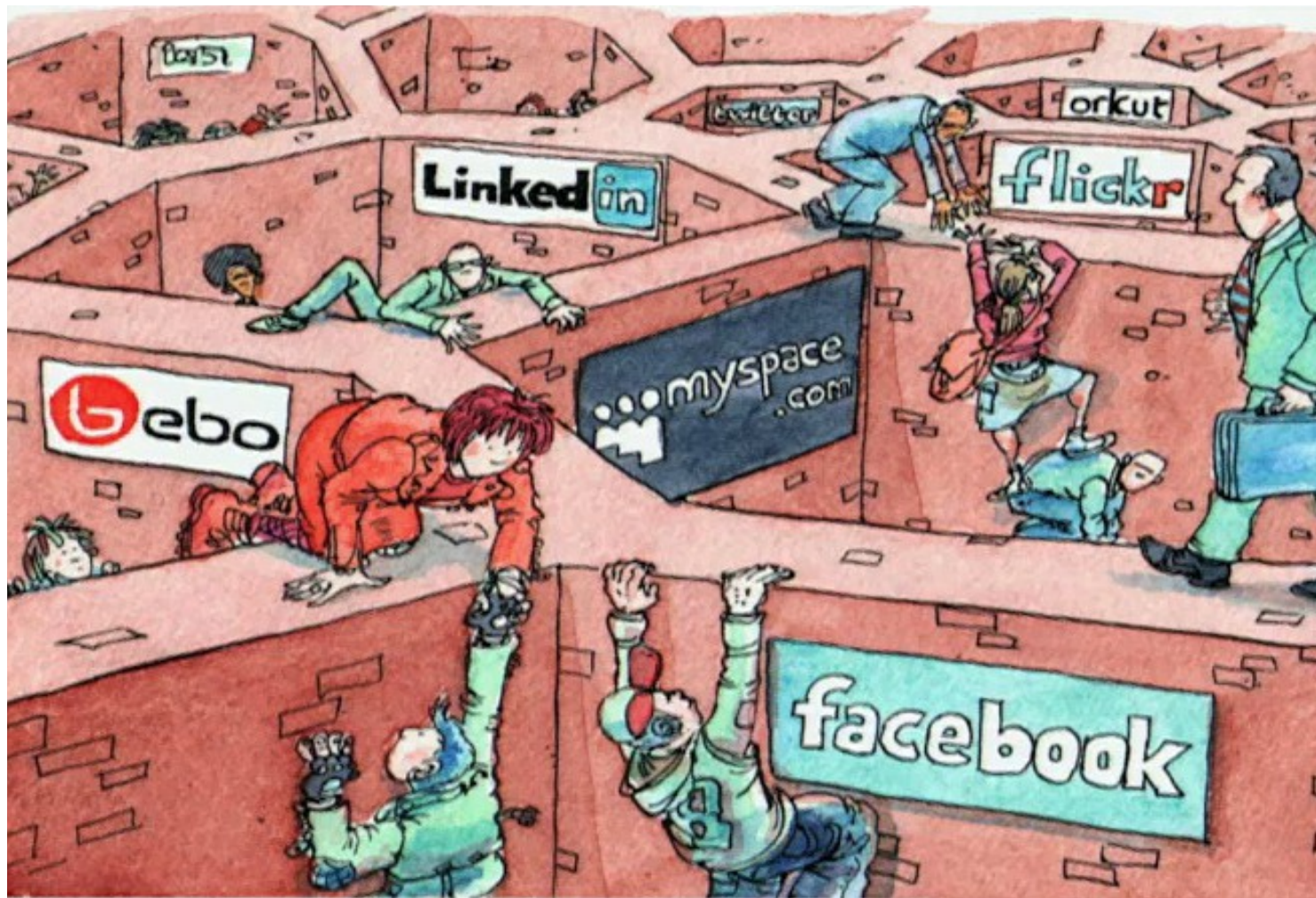
# *¿qué es esto de linked data?*

Lorena Etcheverry - Instituto de Computación, Facultad de Ingeniería, UdelaR

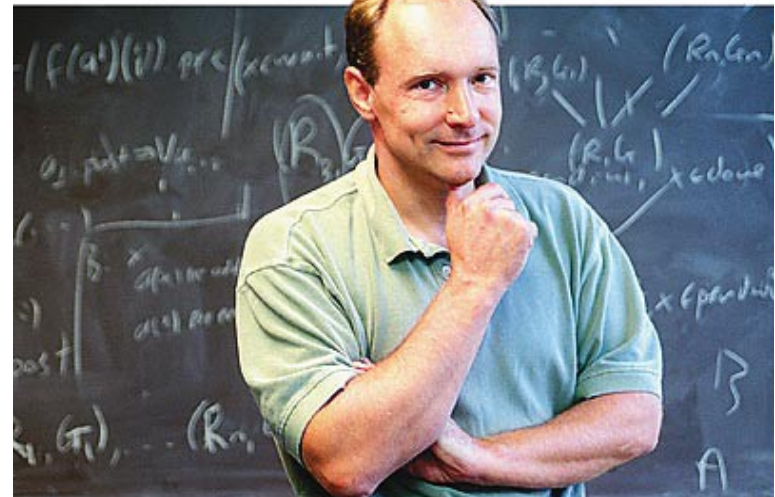
**Octubre 2013**

La web clásica es una red de  
**documentos,**  
interpretable por **humanos,**  
donde las relaciones entre  
documentos no tienen un  
**significado.**

Además, la mayoría de los datos en la web están **a i s l a d o s**



La web de datos es una red de **afirmaciones**, interpretable por humanos y **máquinas**, donde las afirmaciones se relacionan y tienen un **significado**.



RDF: un **modelo de datos** basado en **triplas** que permite representar relaciones.

SPARQL: el lenguaje de **consultas** sobre RDF.

RDF-S y OWL, para representar metadatos y darles **significado** (ontologías).



<http://www.w3.org/2001/sw/wiki/RDF>



<http://www.w3.org/2001/sw/wiki/SPARQL>

# afirmación o tripla

<sujeito, predicado, objeto>



esAutor



Ing. Eladio Dieste

MVD Shopping  
Center

afirmación o **tripla**

<sujeito, predicado, objeto>



Ing. Eladio Dieste

esAutor



MVD Shopping Center

ubicadoEn



Barrio Buceo

En RDF todo es una tripla.

Los **recursos** y las **propiedades** se identifican por URIs

afirmación o **tripla**

<sujeito, predicado, objeto>



esAutor



ubicadoEn



[http://.../Eladio\\_Dieste](http://.../Eladio_Dieste)

[http://.../Montevideo\\_Shopping](http://.../Montevideo_Shopping)

<http://.../Buceo>

En RDF todo es una tripla.  
Los **recursos** y las **propiedades** se  
identifican por URIs



# Linked Data

es un conjunto de  
buenas prácticas para  
**publicar** y *relacionar*  
datos en la web,  
usando  
tecnologías de la  
**web semántica**

# Principios de Linked Data

- 1) Usar **URIs** para nombrar cosas
- 2) Usar **URIs HTTP** que sean consultables por humanos y máquinas
- 3) Proveer información **útil** acerca de cada URI en RDF
- 4) Crear **links** entre URIs

Tim Berners-Lee – Linked Data (2006)

<http://www.w3.org/DesignIssues/LinkedData>

#TED Talk Tim Berners-Lee on the next Web (2009)

[http://www.ted.com/talks/tim\\_berniers\\_lee\\_on\\_the\\_next\\_web.html](http://www.ted.com/talks/tim_berniers_lee_on_the_next_web.html)

# 1) Usar **URIs** para nombrar cosas

URI's *minting*: the act of establishing the association between the URI and the resource it denotes. A URI **MUST** only be minted by the URI's owner or delegate. Minting a URI from someone else's URI space is known as *URI squatting*

The URI Lifecycle in Semantic Web Architecture, David Booth,  
<http://dbooth.org/2009/lifecycle/>

# 1) Usar URIs para nombrar cosas

- Evitar el uso de *namespaces* que no están bajo nuestro control

<http://www.imdb.com/title/tt0057012/#film>

- No incluir detalles de implementación

<http://tiger.biglynx.co.uk/people.php?id=dave-smith&format=rdf>

- Evitar claves "artificiales"

<http://data.nytimes.com/66209802438676211043>

## 2) Usar **URIs HTTP** que sean consultables por humanos y máquinas

**HTTP URI**: mecanismo universal de acceso a una URI

Las URIs HTTP deberían ser **desreferenciables**

“HTTP **clients** can look up the URI using the HTTP protocol and retrieve a **description** of the resource that is identified by the URI”

# Redireccionamiento y negociación de contenido

text/html



URI que identifica el documento HTML que describe al concepto Uruguay

URI que identifica al concepto Uruguay



application/rdf+xml

URI que identifica el documento RDF que describe al concepto Uruguay

**HTTP GET request(text/html)**

<http://dbpedia.org/resource/Uruguay>



**HTTP 303 See Other response**

<http://dbpedia.org/page/Uruguay>



**HTTP GET request**

<http://dbpedia.org/page/Uruguay>



**HTTP 200 OK response**

Código HTML



```
curl -i -L -H "Accept: text/html" http://dbpedia.org/resource/Uruguay
```

**HTTP/1.1 303 See Other**

Date: Wed, 02 Oct 2013 22:21:01 GMT

**Content-Type: text/html; charset=UTF-8**

Server: Virtuoso/07.00.3203 (Linux) i686-generic-linux-glibc212-64 VDB

**Location: http://dbpedia.org/page/Uruguay**

...

**HTTP/1.1 200 OK**

Date: Wed, 02 Oct 2013 21:59:40 GMT

Content-Type: text/html; charset=UTF-8

Content-Length: 608380

Server: Virtuoso/07.00.3203 (Linux) i686-generic-linux-glibc212-64 VDB

...

<?xml version="1.0" encoding="UTF-8" ?>

<!DOCTYPE html PUBLIC "-//W3C//DTD XHTML+RDFa 1.0//EN" ...



dbpedia.org/page/Uruguay

**About: Uruguay**

An Entity of Type : [populated place](#), from Named Graph : <http://dbpedia.org>, within Data Space : <dbpedia.org>

Uruguay Listen/<sup>j</sup>uərəɡwaɪ/, officially the Oriental Republic of Uruguay and sometimes called the Eastern Republic of Uruguay, is a country in the southeastern part of South America. It is home to 3.3 million people, of whom 1.8 million live in the capital Montevideo and its metropolitan area. An estimated 88% of the population is of European descent. With an area of approximately 176,000 square kilometres, Uruguay is the second-smallest nation in South America by area, after Suriname.

Property	Value
dbpedia-owl:PopulatedPlace/areaTotal	<ul style="list-style-type: none"><li>176215.0</li><li>176215.0210629304</li></ul>



**HTTP GET request(application/rdf+xml)**

`http://dbpedia.org/resource/Uruguay`



**HTTP 303 See Other response**

`http://dbpedia.org/data/Uruguay.xml`



**HTTP GET request**

`http://dbpedia.org/data/Uruguay.xml`



**HTTP 200 OK response**

Datos en RDF



```
curl -i -L -H "Accept: application/rdf+xml"
http://dbpedia.org/resource/Uruguay
```

### HTTP/1.1 303 See Other

```
Date: Wed, 02 Oct 2013 22:28:35 GMT
Content-Type: application/rdf+xml; qs=0.95
Server: Virtuoso/07.00.3203 (Linux) i686-generic-linux-glibc212-64 VDB
Location: http://dbpedia.org/data/Uruguay.xml
...
```

### HTTP/1.1 200 OK

```
Date: Wed, 02 Oct 2013 22:28:35 GMT
Content-Type: application/rdf+xml; charset=UTF-8
Content-Length: 603067
...
```

```
<?xml version="1.0" encoding="utf-8" ?>
<rdf:RDF
```

```
  xmlns:rdf="http://www.w3.org/1999/02/22-rdf-syntax-ns#"
  xmlns:rdfs="http://www.w3.org/2000/01/rdf-schema#"
  xmlns:owl="http://www.w3.org/200
  xmlns:dcterms="http://purl.org/d
```

...

```
-<rdf:RDF>
  -<rdf:Description rdf:about="http://dbpedia.org/resource/%C3%81lvaro
    <dbpedia-owl:birthPlace rdf:resource="http://dbpedia.org/resource
    <dbpprop:birthPlace rdf:resource="http://dbpedia.org/resource/Uru
    <dbpprop:placeOfBirth rdf:resource="http://dbpedia.org/resource/l
  -</rdf:Description>
```

```
curl -i -L -H "Accept: text/rdf+n3" http://dbpedia.org/resource/Uruguay
```

**HTTP/1.1 303 See Other**

Date: Wed, 02 Oct 2013 22:29:03 GMT

**Content-Type: text/rdf+n3; qs=0.8**

Server: Virtuoso/07.00.3203 (Linux) i686-generic-linux-glibc212-64 VDB

**Location: http://dbpedia.org/data/Uruguay.nt**

...

**HTTP/1.1 200 OK**

Date: Wed, 02 Oct 2013 22:29:04 GMT

Content-Type: text/rdf+n3; charset=UTF-8

Content-Length: 296903

...

**@prefix owl: <http://www.w3.org/2002/07/owl#> .**

**@prefix ns1: <http://cs.dbpedia.org/resource/> .**

**@prefix dbpedia: <http://dbpedia.org/resource/> .**

**ns1:Uruguay owl:sameAs dbpedia:Uruguay .**

**@prefix ns3: <http://pl.dbpedia.org/resource/> .**

**ns3:Urugwaj owl:sameAs dbpedia:Uruguay .**

# Utilización de Hash URIs

```
curl -i http://www.w3.org/2006/07/SWD/recipes/examples-20080421/  
example1#ClassA
```

**HTTP/1.1 200 OK**

Date: Thu, 03 Oct 2013 13:08:38 GMT

Server: Apache/2

**Content-Type: application/rdf+xml;**

...

```
<?xml version="1.0"?>
```

```
<rdf:RDF
```

```
xml:base="http://www.w3.org/2006/07/SWD/recipes/examples20080421/example1">
```

```
<owl:Ontology
```

```
rdf:about="http://www.w3.org/2006/07/SWD/recipes/examples20080421/example1">
```

```
  <rdfs:comment>An example vocab for minimal hash setup.</rdfs:comment>
```

```
  <rdfs:label>Example 1 Ontology</rdfs:label>
```

```
</owl:Ontology>
```

```
<owl:Class rdf:about="http://www.w3.org/2006/07/SWD/recipes/examples-  
20080421/example1#ClassA">
```

```
</owl:Class> ...
```

```
</rdf:RDF>
```

### 3) Proveer información **útil** acerca de cada URI en RDF

```
dbpedia:Eladio_Dieste    dbpedia-owl:birthPlace
dbpedia:Uruguay ;
    dbpprop:birthPlace    dbpedia:Uruguay ;
    dbpprop:deathPlace    dbpedia:Uruguay ;
    dbpedia-owl:deathPlace dbpedia:Uruguay .
```

## 4) Crear **links** entre URIs

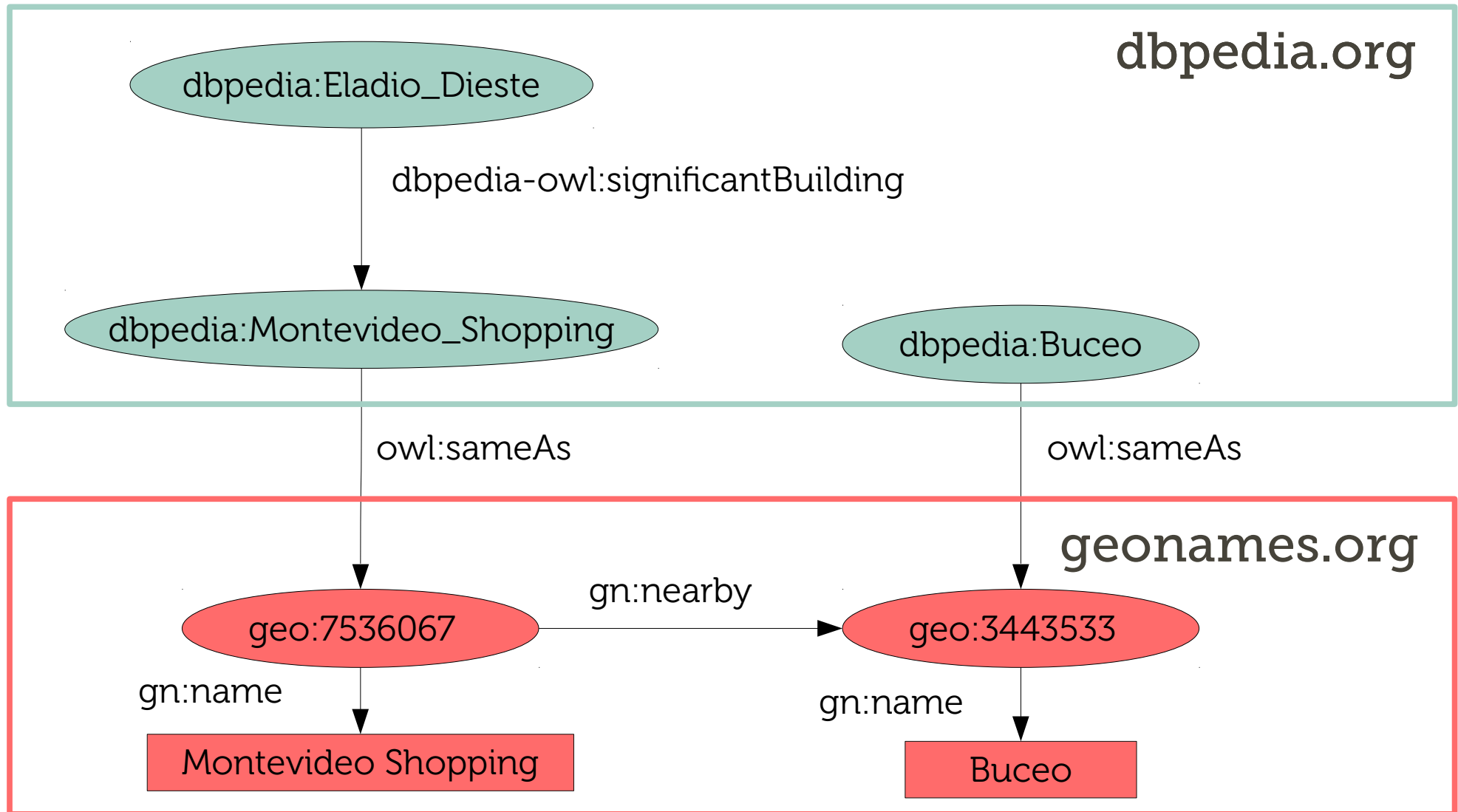
```
@prefix ns192: <http://www.wikidata.org/entity/> .
```

```
@prefix ns17: <http://nl.dbpedia.org/resource/> .
```

```
@prefix ns18: <http://eu.dbpedia.org/resource/> .
```

```
dbpedia:Uruguay owl:sameAs ns192:Q77 ,  
    <http://gadm.geovocab.org/id/0_233> ,  
    dbpedia:Uruguay ,  
    <http://rdf.freebase.com/ns/m.07twz> ,  
    ns18:Uruguai ,  
    ns17:Uruguay .
```

@prefix gn: http://www.geonames.org/ontology  
@prefix dbpedia: http://dbpedia.org/resource/  
@prefix dbpedia-owl: http://dbpedia.org/ontology/  
@prefix geo: http://sws.geonames.org/  
@prefix owl: http://www.w3.org/2002/07/owl#



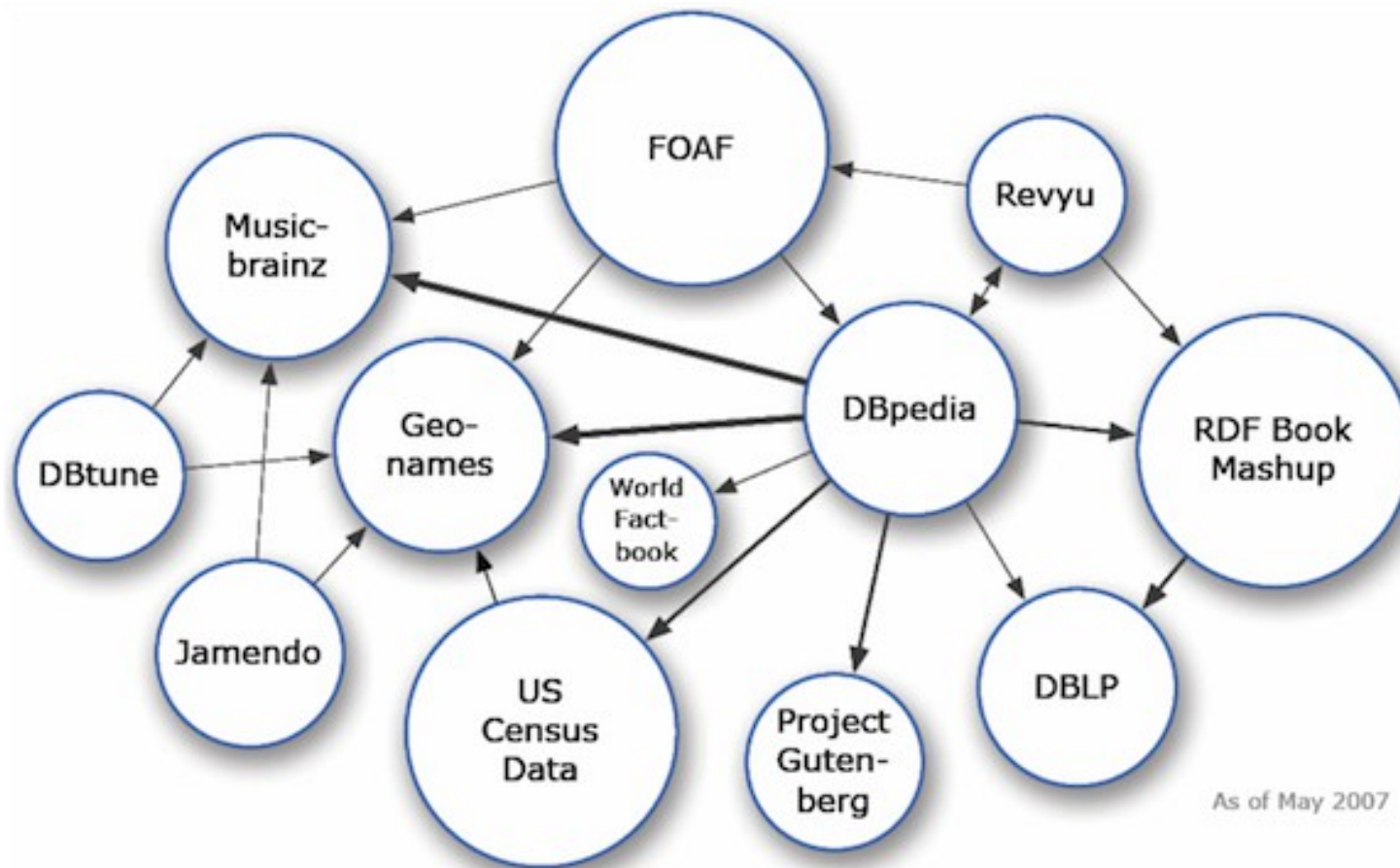
# Linked Data + Open Data = LOD

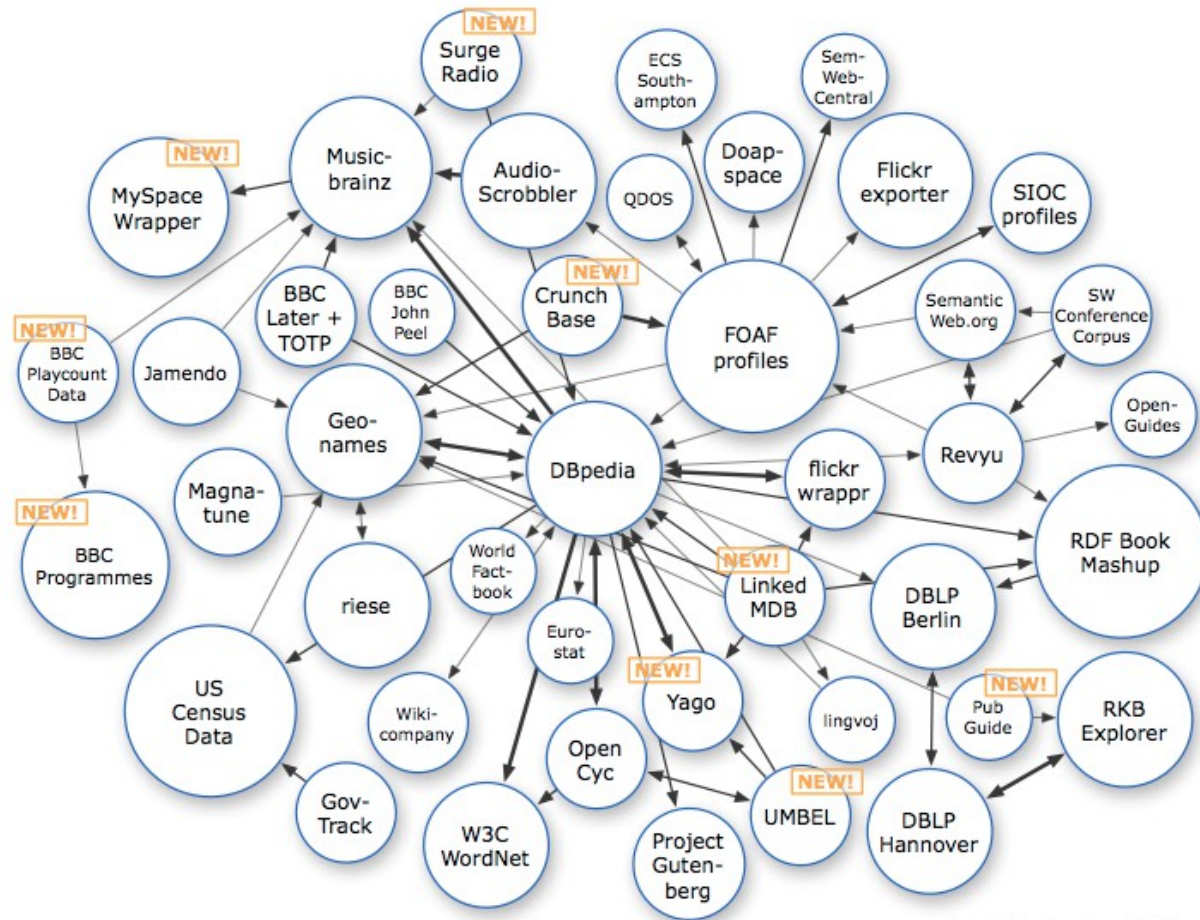
## LINKED DATA

- ★ On the web, open license
- ★ ★ Machine-readable data
- ★ ★ ★ Non-proprietary format
- ★ ★ ★ ★ RDF standards
- ★ ★ ★ ★ ★ Linked RDF

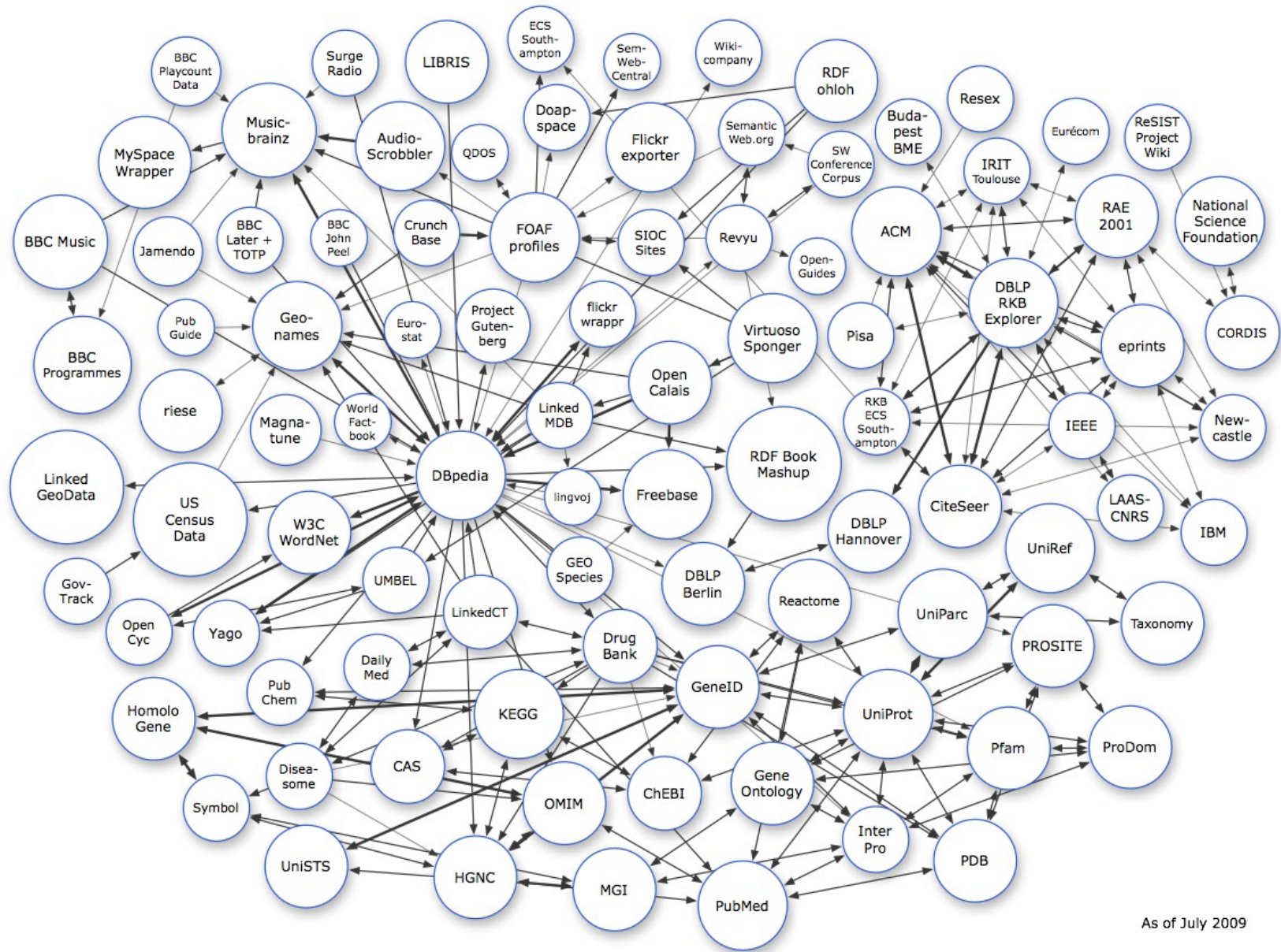
IS YOUR DATA 5 ★ ?



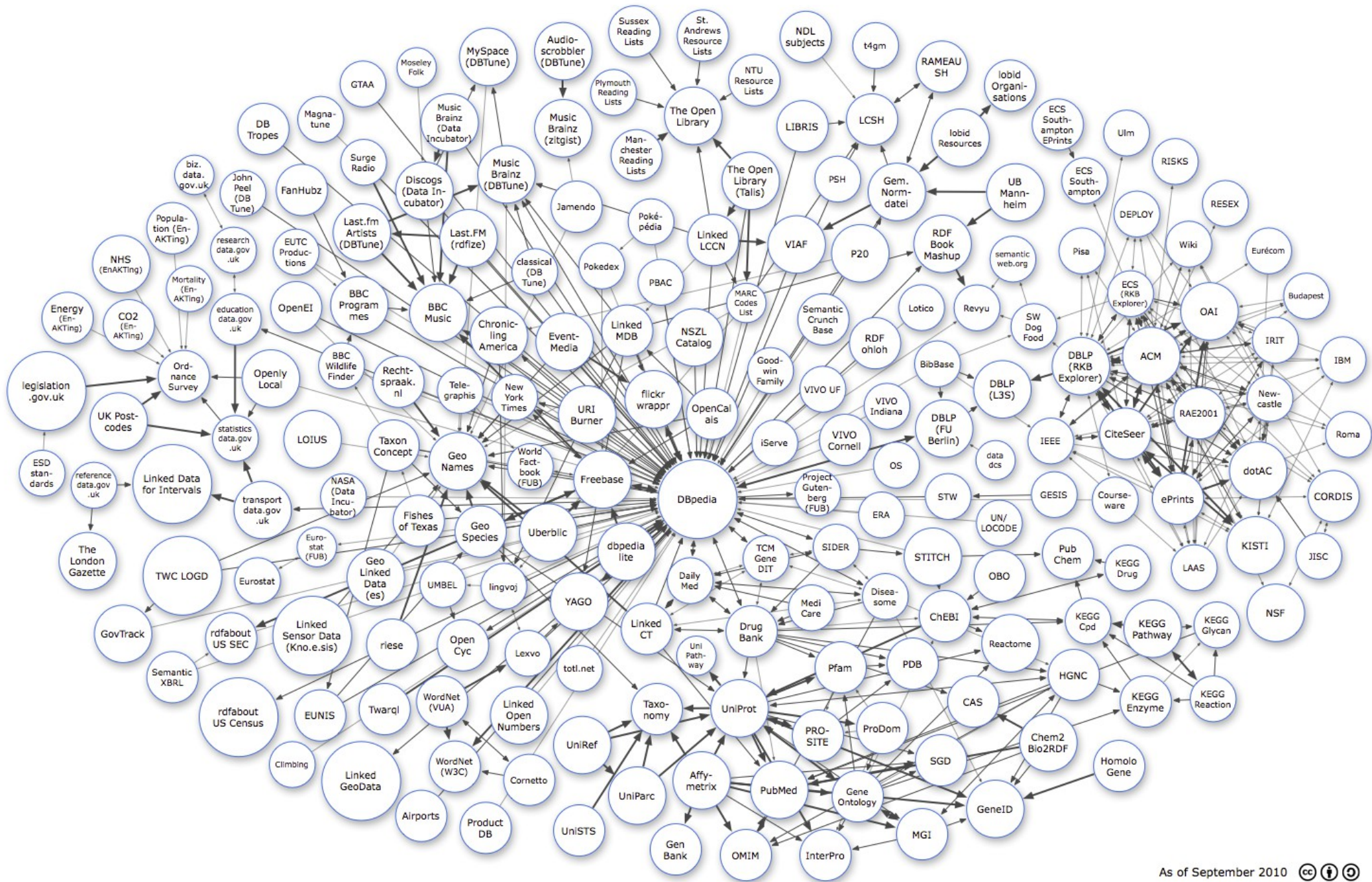


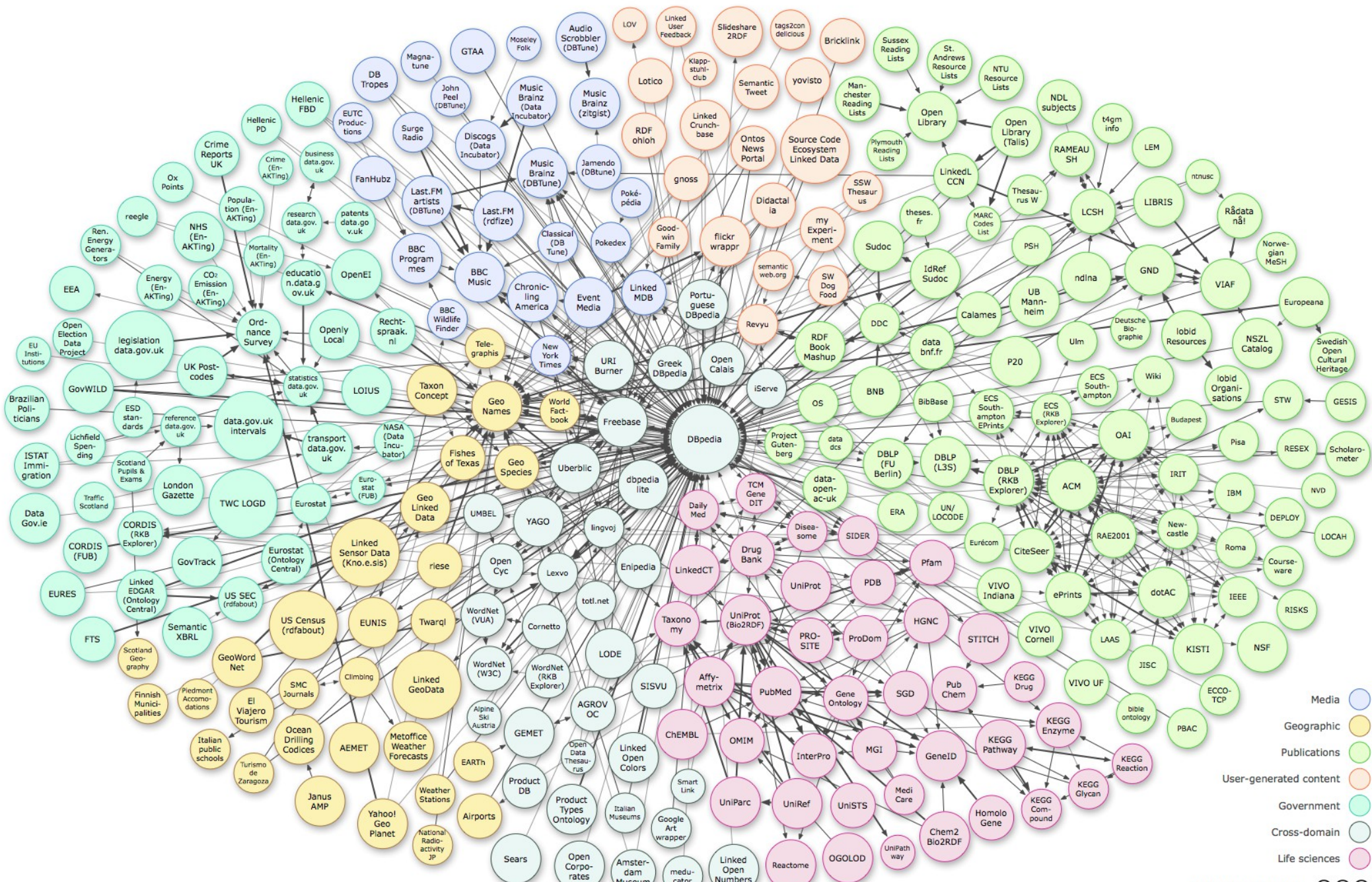


As of September 2008



*http://lod-cloud.net/2009*





- Media ●
- Geographic ●
- Publications ●
- User-generated content ●
- Government ●
- Cross-domain ●
- Life sciences ●

As of September 2011

<http://lod-cloud.net/2011>

# Referencias

- Tom Heath and Christian Bizer (2011) *Linked Data: Evolving the Web into a Global Data Space*.  
<http://linkeddatabook.com/editions/1.0/>
- W3C, *Best Practice Recipes for Publishing RDF Vocabularies*,  
<http://www.w3.org/TR/swbp-vocab-pub/>
- W3C, *Cool URIs for the Semantic Web*,  
<http://www.w3.org/TR/cooluris/>
- Juan Sequeda, Daniel P. Miranker, *Linked Data Tutorial*, Semantic Technology Conference 2012,  
<http://www.slideshare.net/juansequeda/linked-data-tutorial-at-semtech-2012>
- Tom Heath, *Linked Data - Connect Distributed Data across the Web* <http://linkeddata.org>

# Gracias

Lorena Etcheverry

[lorenae@fing.edu.uy](mailto:lorenae@fing.edu.uy)