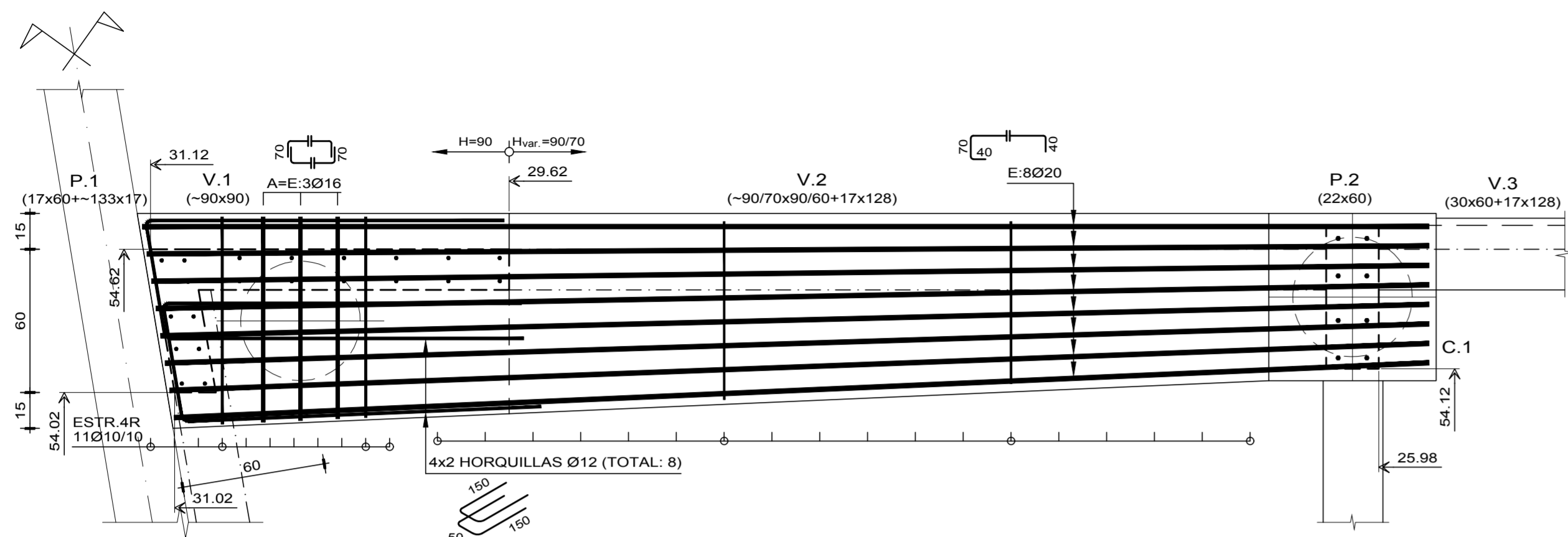


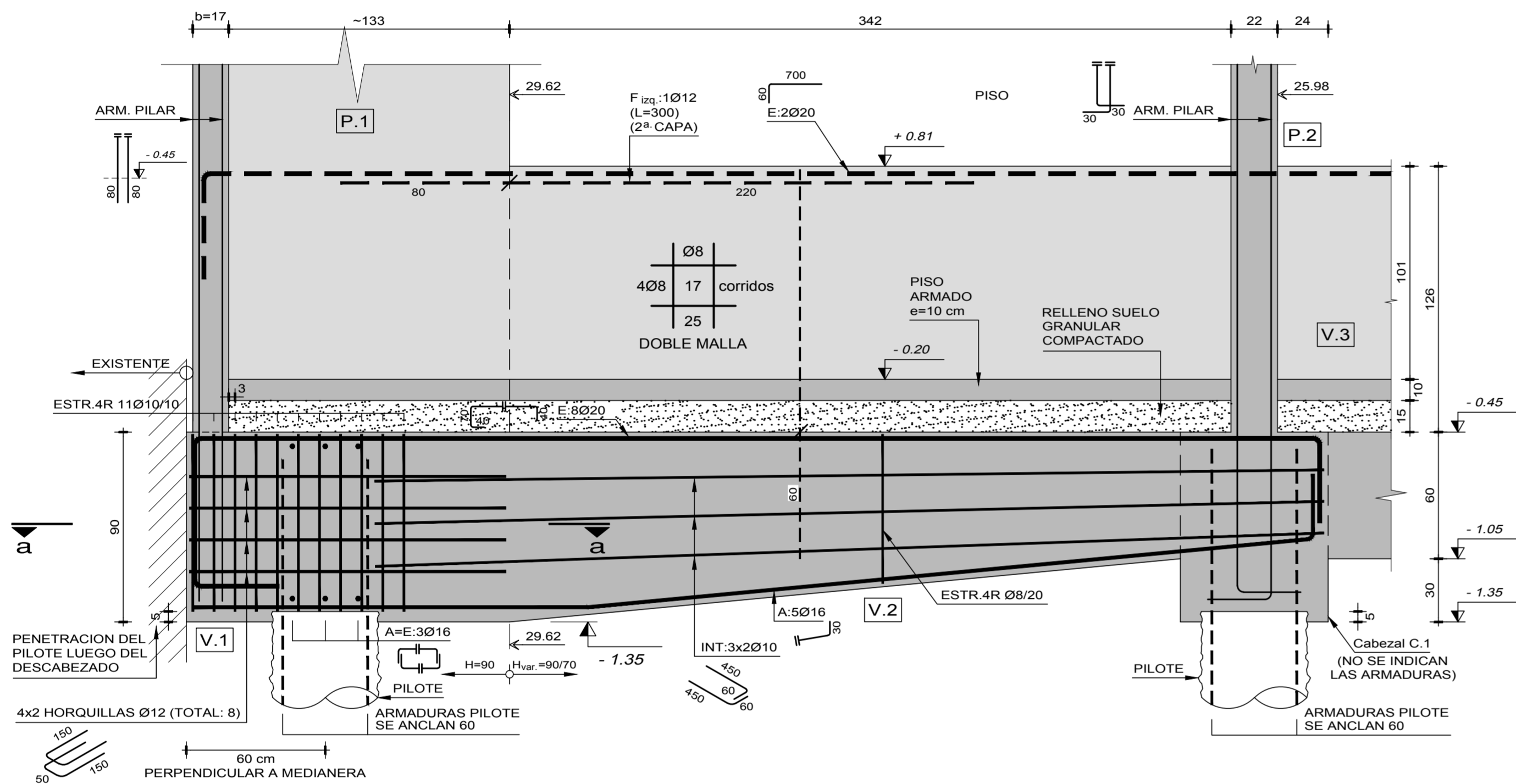
DETALLE P.1 - V.1 - V.2

ESCALA 1:20

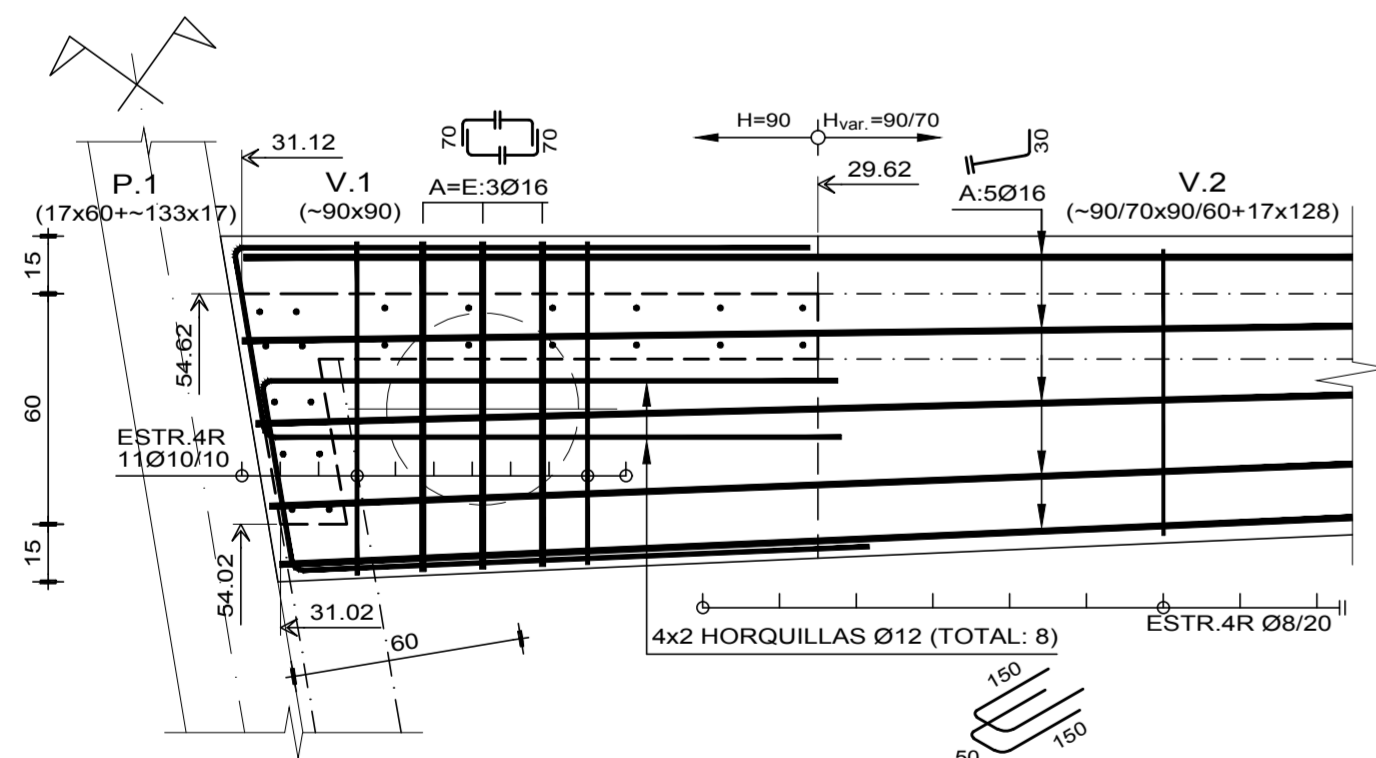
PLANTA



ALZADO

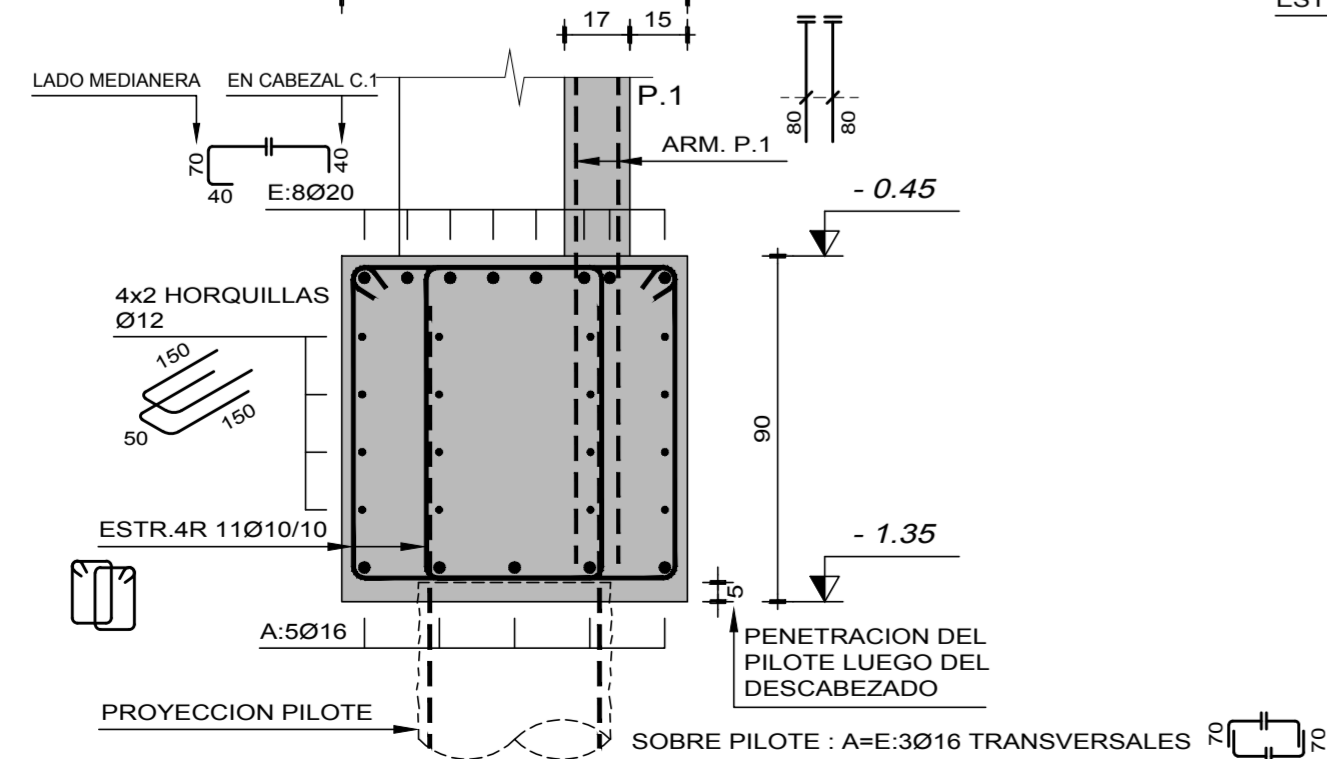


CORTE a-a



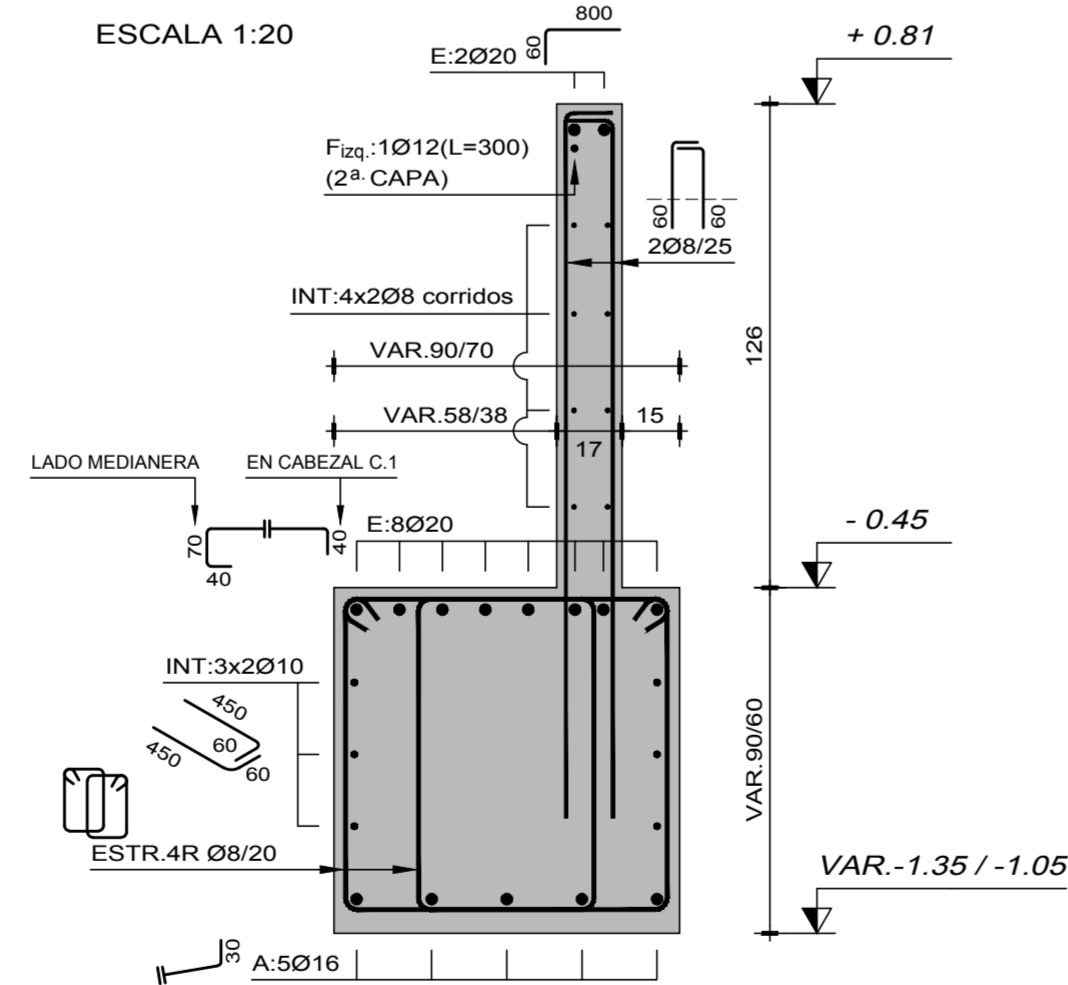
DETALLE V.1

ESCALA 1:20



DETALLE V.2

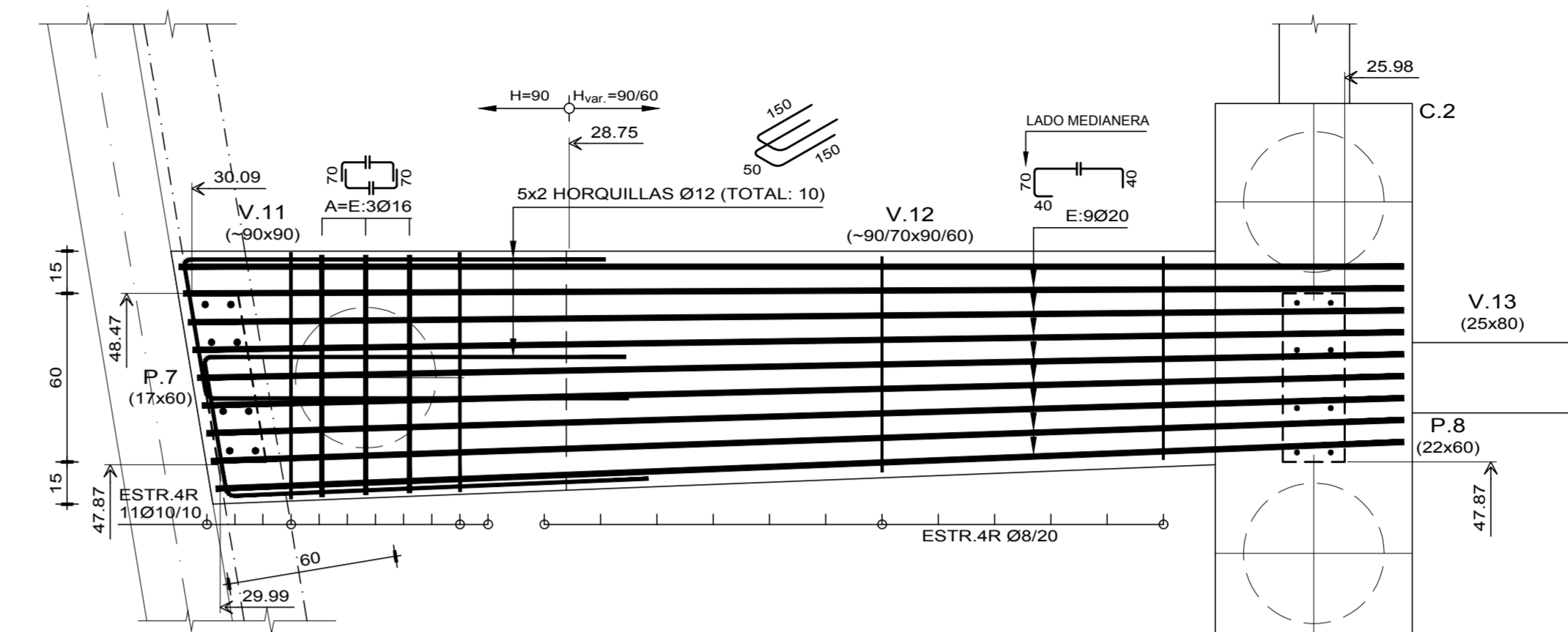
ESCALA 1:20



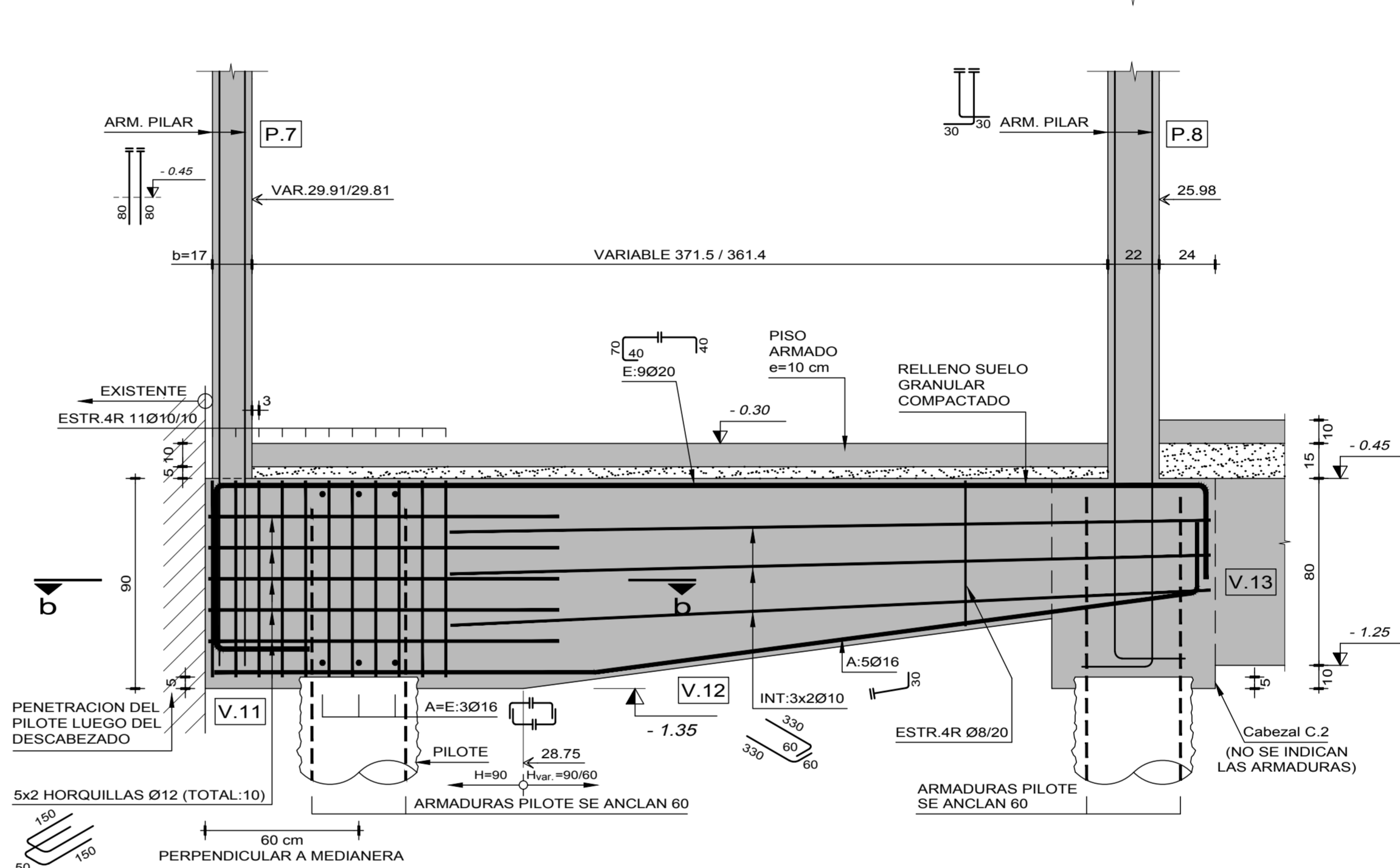
DETALLE P.7 - V.11 - V.12

ESCALA 1:20

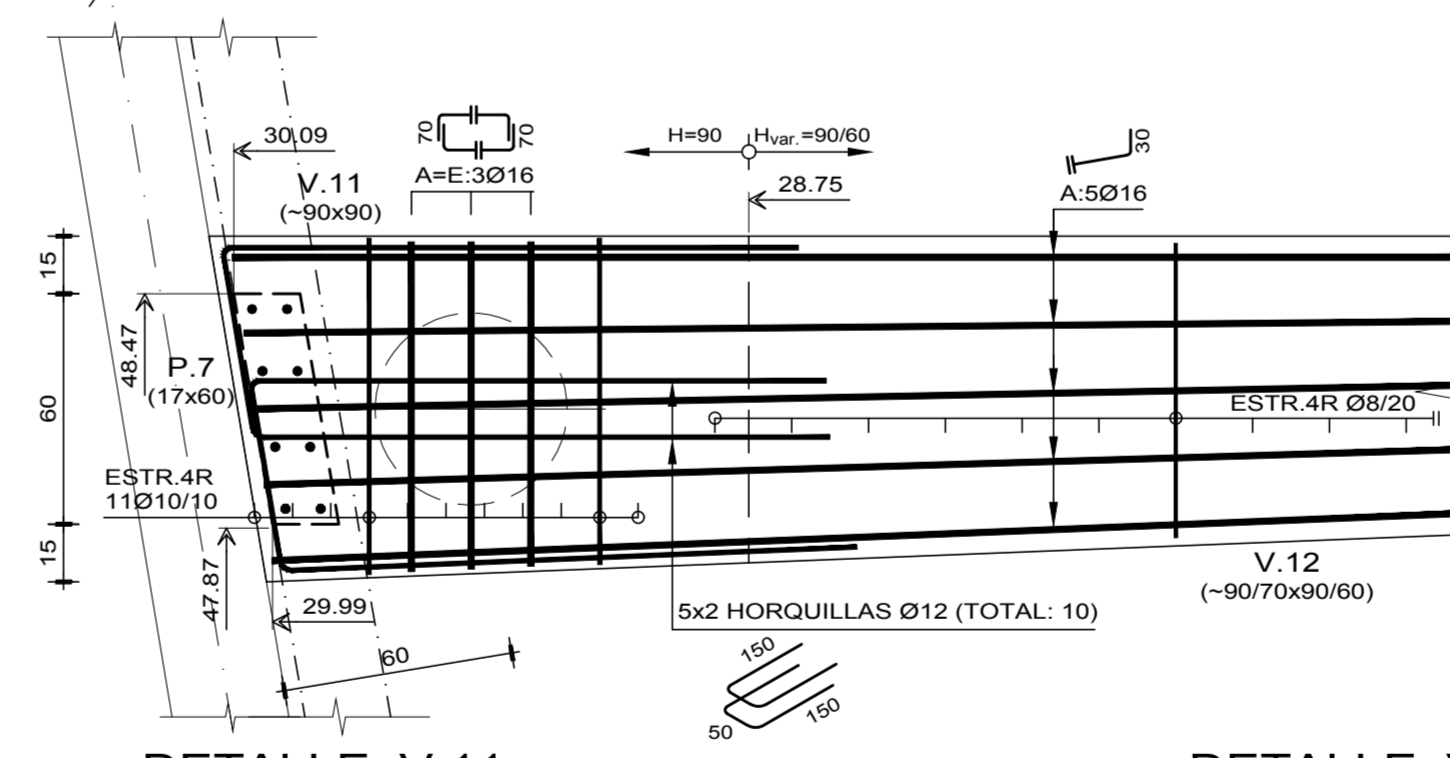
PLANTA



ALZADO

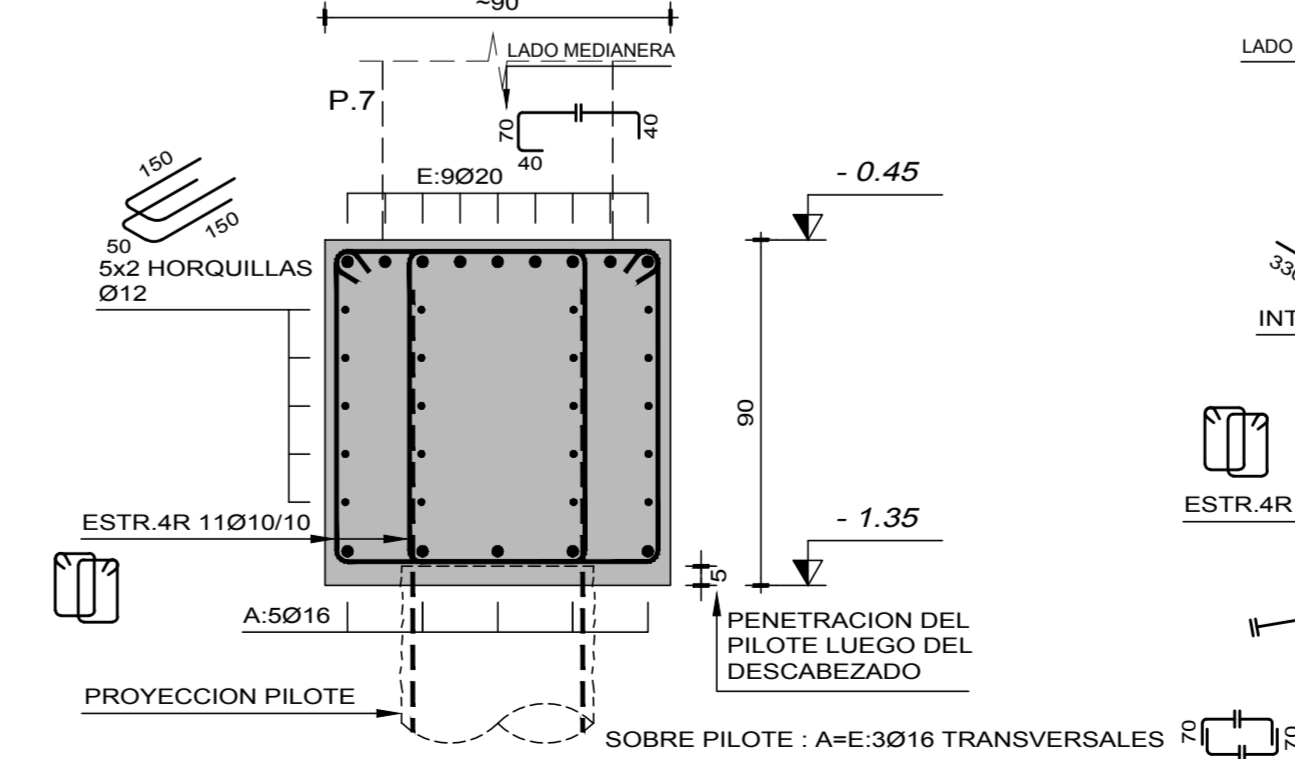


CORTE b-b



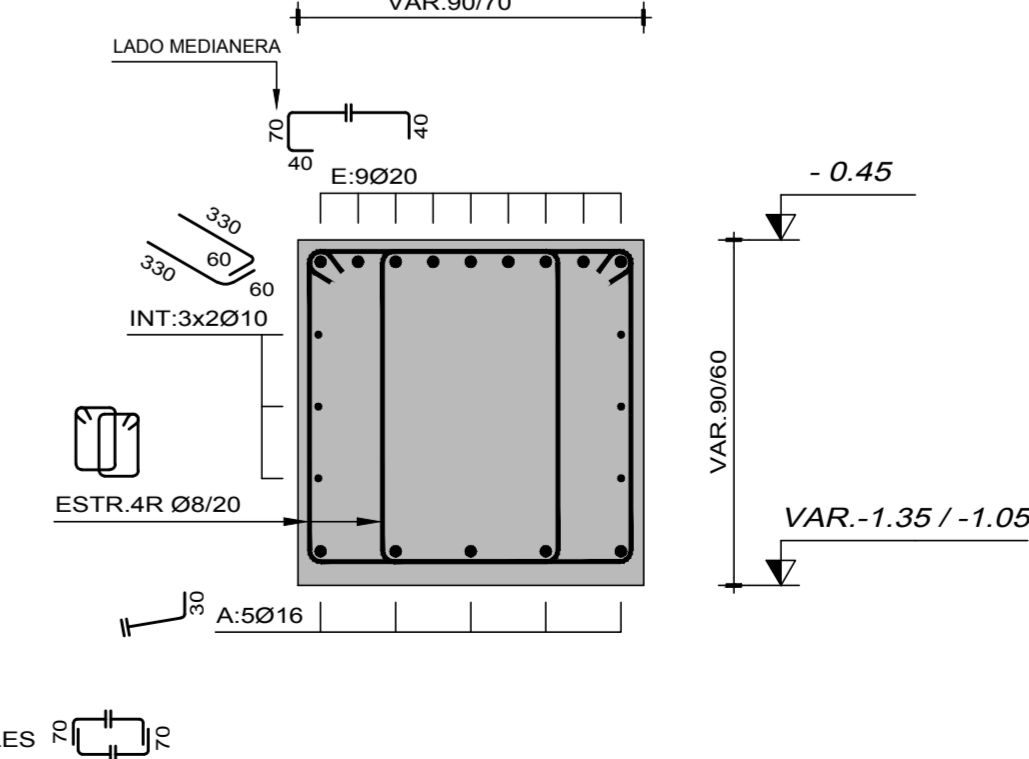
DETALLE V.11

ESCALA 1:20



DETALLE V.12

ESCALA 1:20



NOTAS:

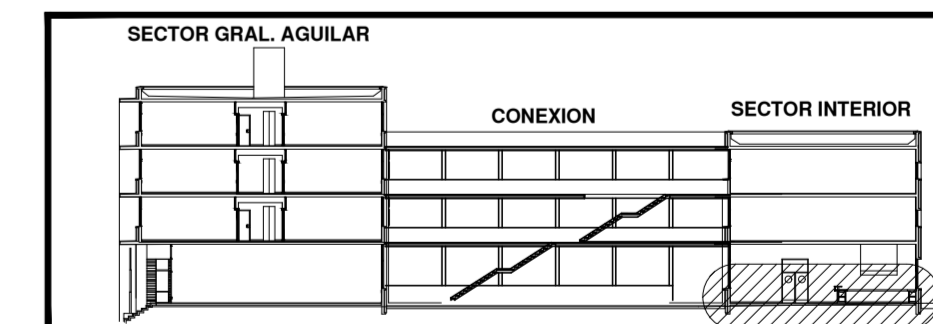
- ↑ INDICAN COTA DE CARA SUPERIOR DE ESTRUCTURA
- ⊕ INDICAN COTAS TERMINADAS DE ALBAÑILERIA

BARRAS DE ACERO:

BARRAS CONFORMADAS, DUREZA NATURAL GRADO ADN 500 (UNIT 1050/2001) EN LOS CASOS EXCEPCIONALES EN QUE EL HIERRO ES COMUN (LISO) GRADO AL 220 (UNIT 1050/2001) SE INDICA ϕ .

HORMIGON:

EN GENERAL HORMIGON DE RESISTENCIA CILINDRICA CARACTERISTICA A LOS 28 DIAS MAYOR O IGUAL QUE 210 Kg/cm². EN PISOS ARMADOS HORMIGON DE RESISTENCIA CILINDRICA CARACTERISTICA A LOS 28 DIAS MAYOR O IGUAL QUE 130 Kg/cm².



MODIFICACIONES			
REV	FECHA	MOTIVO	AUTORIZA
R.1	FEB. 2005	APROBADO PARA CONSTRUCCION	

OBRA GASTRONOMIA HOTELERIA Y TURISMO Gral. AGUILAR esq. AGRACIADA - MONTEVIDEO	FECHA OCT. 2004 ESCALA INDICADA
PLANO ESTRUCTURA - SECTOR "A" INTERIOR	LAMINA L-E06
FUNDACION	
DETALLES DE VIGAS (1)	