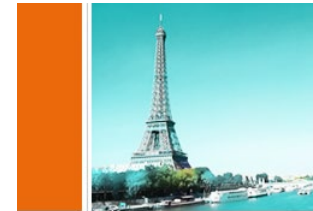




# Télécom Paris



Engineering Double Degree Program  
Exchange Program

Innovate in a digital world





## Why choose Télécom Paris?

The Leading French Engineering School in Digital Technologies



# The Leading French Engineering School in Digital Technologies



## International rankings – Institut Polytechnique de Paris

### University rankings

- 49<sup>th</sup> (World) & 2<sup>nd</sup> (France) - QS World University Rankings 2022
- 91<sup>th</sup> (World) & 3<sup>rd</sup> (France) - THE World University Rankings 2022
- 6<sup>th</sup> (World) - Young University THE Rankings 2022

### Ranking by subject

- 37<sup>th</sup> Maths, 28<sup>th</sup> Physics, 2<sup>nd</sup> Statistics - Shanghai WUR Ranking
- 48<sup>th</sup> (World) in Computer Sciences & 2<sup>nd</sup> (Frce) in Engineering - THE WUR 2022

### Employability

- 1<sup>st</sup> (France) & 12<sup>th</sup> (World) - QS Graduate Employability Rankings 2022

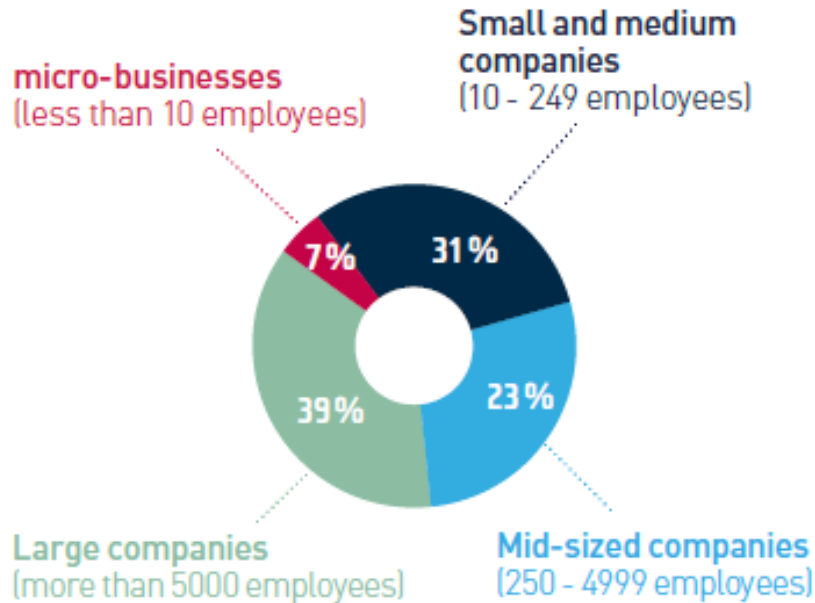
## French rankings – Télécom Paris

- 1<sup>st</sup> school in Digital Technology (Le Figaro Rankings 2021)
- 2<sup>nd</sup> French engineering School (L'Etudiant Rankings 2022)
  - 1<sup>st</sup> in internationalization (L'Etudiant 2022)
  - 1<sup>st</sup> in proximity with companies (L'Etudiant 2022)

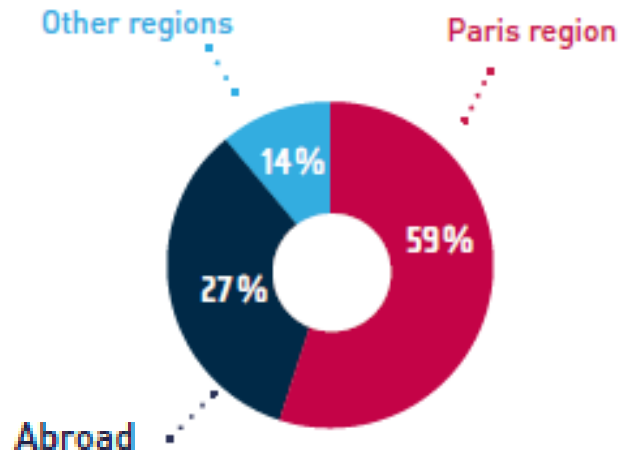
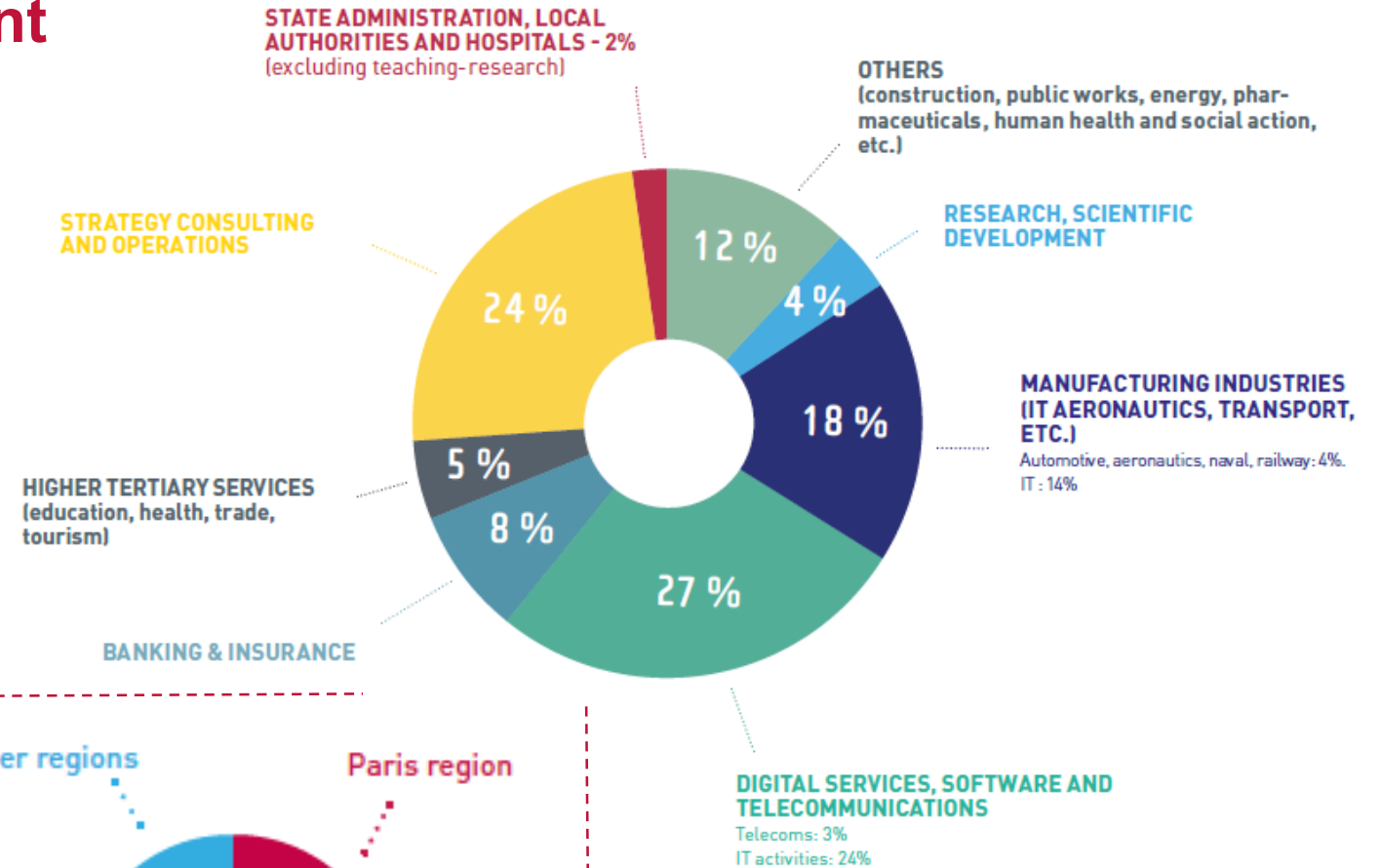


# Excellent Employment Prospects

- **95%** of all graduates are employed **within 3 months** of graduating.
- **66%** landed a job before graduation



Source: 2021<sup>st</sup> Job Survey of the last 3 graduating classes



**47,880 €**  
Average annual gross salary without bonus 2020 Graduates



# Corporate Relations

## ■ Governance

- Representatives on Boards, working groups, etc.

## ■ Instruction

- > 500 guest speakers from companies
- 100 joint events (Campus Recruitment Forum, company visits, “A day in the life” field visits, Round Tables, case studies, conferences, challenges, etc.)
- Internships and study projects

## ■ Research

- 25 Teaching and Research chairs or Joint Laboratories
- Experimental case studies

## ■ Entrepreneurship

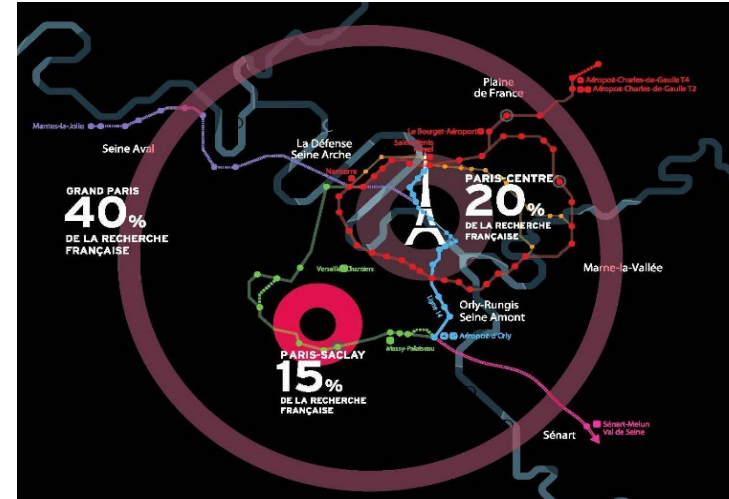
- 1st academic public incubator:
  - 450 sustainable companies launched in 20 years
  - 3,000 jobs created (s. 1999) - 3 new startups per month –
  - 85% companies in business after 5 years - 20 patents per year



# A campus in the Leading Economic Region in Europe

## The Paris region:

- 4.6% of total EU GDP – 669 B€
- 678,000 students – 75,000 intern. students
- > 1M companies
- 1<sup>st</sup> EU region for R&D and innovation
- 162,000 researchers and R&D engineers
- > 50% of French startups



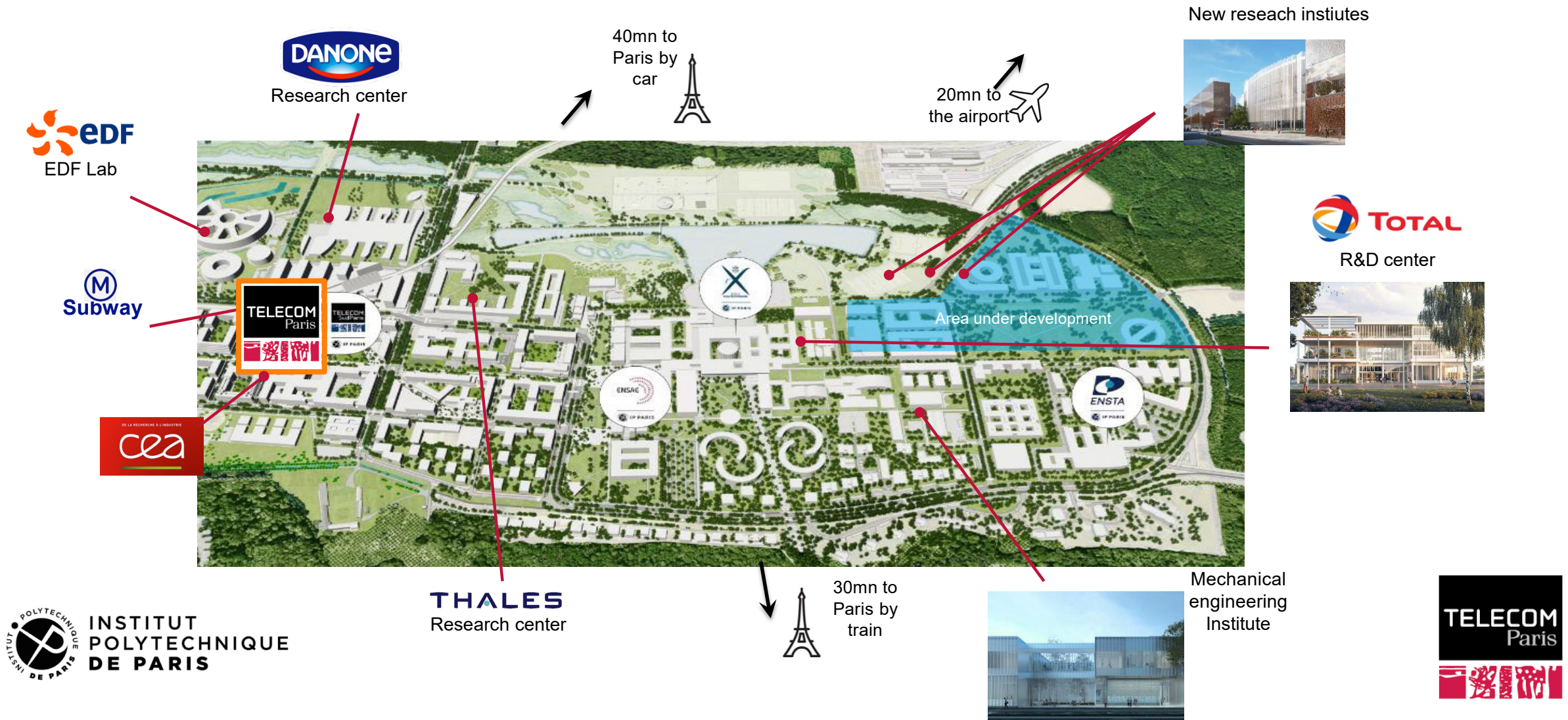
## Plateau de Saclay campus:

- 40% of public and private research in the Paris region
- 15% of French research
- One of the top 8 innovation clusters in the world (MIT 2013)
- 45,000 R&D jobs
- 15,000 researchers – 360 labs
- 65,000 students – 30 research & education
- 4 Fields medals – 2 Nobel prizes
- 20 km south of Paris, close to Orly airport





# A Campus in a Scientific & Research Ecosystem



# A Founding Member of Institut Polytechnique de Paris



- **8,500 students**
  - **95%** of students find a job in less than 4 months after graduation
  - 900 PhD students
  - 230 post-doctoral students
- **1,000 permanent research-professors**
- **30 laboratories**
- **2 interdisciplinary centers**
  - E4C - Center of Energy for Climate
  - Hi Paris! - Center of Artificial Intelligence & Data Analysis

## Degrees:

- *Masters*
- *PhD*
- *PhD-tracks*



# High-level Scientific Research

- **Reference Center in Europe** for Pluridisciplinary Research in the Digital Field
- Permanent connections with **public research institutes**: CNRS, INRIA, CEA, etc.
- **160 researchers**
- **Over 200 PhD students**
- **600 publications per year**
- **2 Laboratories**
  - **Interdisciplinary Institute of Innovation (i3)**: Social and economical sciences
  - **Informations Processing and Communication Laboratory (LTCI)**:
    - Signal, Image, 3D processing
    - Networks & Computer Sciences
    - Digital Communications & Electronics



# 6 Strategic Research Focuses



**Very Large Networks & Systems**

**55** Permanent members  
Membres permanents  
**206** Publications  
Publications  
**23** Thesis  
Thèses soutenues



**Design, Interaction, Perception**

**17** Permanent members  
Membres permanents  
**56** Publications  
Publications  
**10** Thesis  
Thèses soutenues



**Digital Trust**

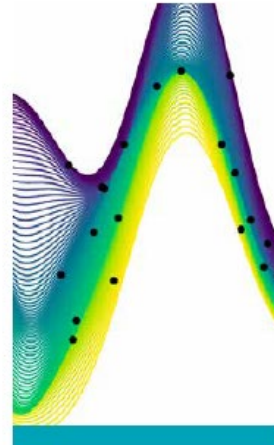
**27** Permanent members  
Membres permanents  
**71** Publications  
Publications  
**9** Thesis  
Thèses soutenues



**Data Science & Artificial Intelligence**

Sciences des données et intelligence artificielle

**44** Permanent members  
Membres permanents  
**227** Publications  
Publications  
**24** Thesis  
Thèses soutenues



**Mathematical Modeling**

**3 areas**

- > Content, knowledge and interactions
- > Networks and systems
- > Information and its ecosystems

**Axe transverse**

**Modélisation mathématique**

**3 domaines**

- > Contenus, connaissances et interactions
- > Réseaux et systèmes
- > L'information et ses écosystèmes



**Digital Innovation**

- 4** Joint laboratories  
**2** Research chairs  
**1** Startup incubator  
**1** SME Builder

**Axe transverse**

**Innovation numérique**

- 4** Laboratoires communs  
**2** Chaires de recherche  
**1** Incubateur de startup  
**1** accélérateur de startup





## Engineering Double Degree Program

A unique and customized training  
The French “*Grandes Ecoles*” engineering model



# A Unique Training Program

## Scientific excellence

- *In Mathematics, Physics, Electronics and Computer Science - Highly selective entrance exam - high level professor-researchers – Recognized outstanding research*

## Multidisciplinary approach

- *Social sciences, economics, culture, management, law courses – small groups*

## Business orientation

- *Seminars on digital careers and fields, case studies, research chairs, internships, professional skills & methods, active alumni network, etc.*

## Innovation focused

- *Innovation facilities – entrepreneurship courses, innovation and research projects – interactions between labs and company R&D centers - incubators*

## International openness

- *45% international students on campus - 2 foreign languages – studies abroad*



# 3 Major Profiles of Engineers

## INVENTORS

Thanks to Excellence in Scientific Teaching:



Serge ABITEBOUL (77)  
Sciences 'Académicien'



Vincent DUREAU (84)  
TV technology for Google



Luc JULIA (95)  
SIRI technology for Apple

## ENTREPRENEURS

Thanks to an Innovative, Interactive and Project-based Pedagogy:



Céline LAZORTHES (08)  
Leetchi Founder



Oscar SALAZAR (06)  
UBER co-founder



Jean-Luc VAILLANT (90)  
LinkedIn co-founder

## TRANSFORMERS

Thanks to Economics & Digital Social Sciences Teaching:

Digital transformation  
of companies



Elodie PERTHUISOT-ZIEGLER (01)  
Executive Director E-commerce & marketing, Carrefour



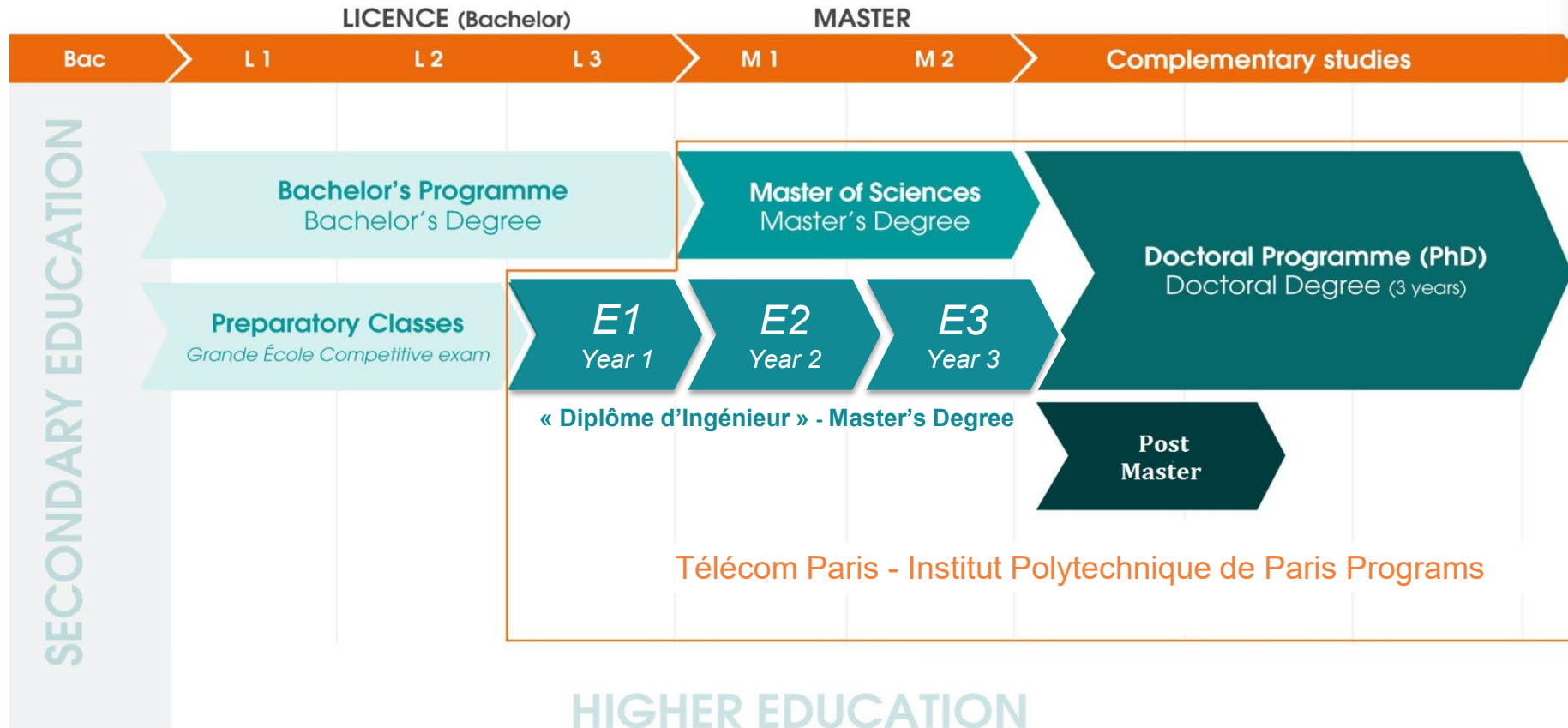
Jean-Christophe LALANNE (83)  
CIO, Air France-KLM



Yves TYRODE (91)  
Digital Officer, BPCE

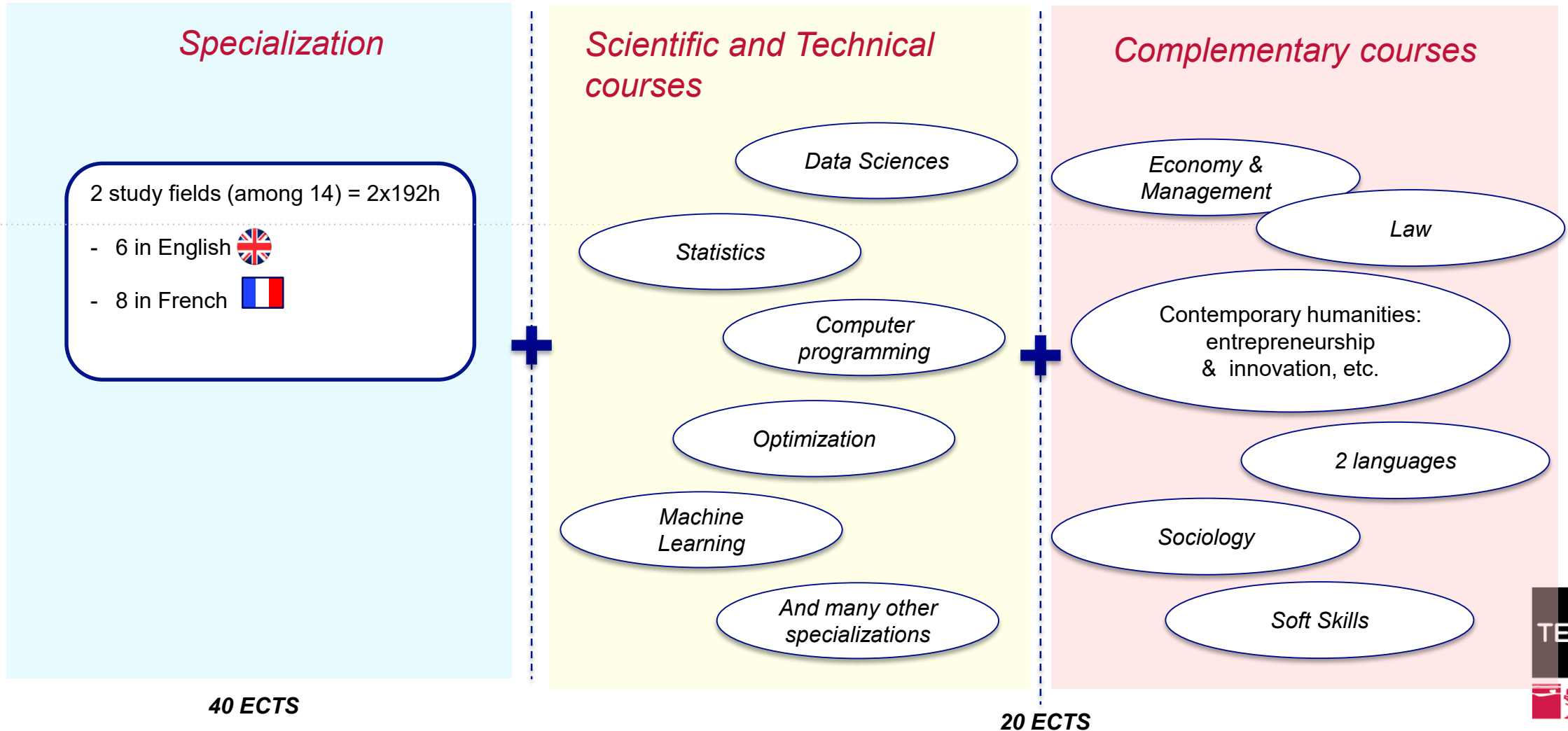


# When Do You Enter the Curriculum?



# Year 2: a tailor-made Program

2 semesters



# 14 Study Fields (2 Choices) – Year 2

## AI & Data Sciences



Data Science (SD)



Signal Processing for Artificial Intelligence (TSIA)



Image (IMA)

## Mathematics & Computer Sciences



Stochastic processes and scientific computing (MACS)

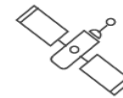


Applied algebra, Cryptography, Quantum information, Coding theory (ACCQ)



Mathematics, Theoretical Computer Science & Operation Research (MITRO)

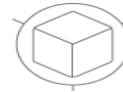
## Computer Systems, Interactive and Embedded



Embedded Systems (SE)



Distributed Software Systems (SLR)



3D & Interactive systems (IGR)

## Networks, Communications & Cybersecurity



Large Digital Infrastructures (GIN)



Infrastructures and Networks Security (SR2I)



Wireless networks and IoT (RIO)



Telecommunications: data to systems (TELECOM)

## Economics & Digital Innovation



Markets, Organization, Data, Strategies (MODS)



# Year 3: Career Preparation Options

*Télécom Paris Technological innovation  
(internal option) – 30 ECTS (1 semester)*

1 study field - 12 ECTS  
+ a “PRIM” Research & Innovation Projet - 12 ECTS  
+ complementary elective courses (sciences, languages, humanities, etc.)

Areas:

- Artificial Intelligence, Image and Data Sciences
- Fundamentals of Mathematics and Computer Science
- Networks, IOT and Cybersecurity
- Digital systems
- Innovation

OR

*Partnership Master 2 - 30 ECTS*

**DUAL DEGREES: 3 DIPLOMAS!**



6-month paid internship in France  
30 ECTS (1 semester)





## Engineering Exchange Program

A vast choice of study fields





# Simple exchange Program

- 1 or 2 semesters (30 or 60 ECTS)
- Fall & Spring semesters
- Fields
  - Artificial Intelligence and Data Sciences
  - Fundamentals of Mathematics and Computer Science
  - Economics and Social Sciences
  - Networks, Communications and Cybersecurity
  - Digital Systems
- Choice of courses: [Exchange courses catalogue](#)



## Dual degree program

- 2 years (Y2 and Y3 of MSc in engineering program)
- Application after at least 5 successful semesters of graduation in science or engineering
- Entering after successful selection and at least 7 semesters of *graduação*



**Admissions**  
**Tuition Fees & Living costs**  
**Scholarships**  
**Accommodation**  
**Campus Life**



# Application for admission (from a partner university)



## ■ Requirements

- Preselection and **Nomination** by your university's international coordinator
- Languages:
  - **A minimum B1** acquired level for **French**-taught study fields: DELF or DALF certificates
  - **A minimum B1** acquired level for **English**-taught fields: Cambridge First Certificate, Cambridge Advanced & Proficiency test, TOEFL IBT, IELTS

## ■ Identify your study fields for your [Double Degree program](#) or [Exchange program](#)

## ■ Send application files for double degree programs to: [incoming@telecom-paris.fr](mailto:incoming@telecom-paris.fr) before October 1<sup>st</sup> for the following year intake Engineering degree application form

- ✓ Motivation letter
- ✓ Curriculum vitae
- ✓ Official transcripts of records from at least the last 3 years
- ✓ Learning agreement (for Erasmus students)
- ✓ A copy of your passport or identity card
- ✓ At least 2 recommendation letters
- ✓ Copies of French language and/or English language certificate(s)

In English or French

## ■ Motivation interview

To know more: <https://www.telecom-paris.fr/en/international/international-students/application-resources>

## Dual degree Admission Calendar

- **On-line application: before September 30, 2022**
- **Shortlist of applicants – eligibility/admissibility: October 10, 2022**
- **Motivation interview: Oct. 17 – Nov. 4, 2022**
- **Decision of admission: Mid-November 2022**
- **Start at Telecom Paris: August-September 2023**





## After Your Admission

- You will receive your admission letter
- Select your study fields (Double degree) or courses (exchange program)
- Start applying to a student housing
- Follow a few administrative steps to prepare for your stay in France
  - For assistance: [incoming@telecom-paris.fr](mailto:incoming@telecom-paris.fr)
- Attend an intensive French language course during the summer
  - To prepare for your stay – mandatory for students under C1 level
  - Not compulsory for exchange students
- Upon your arrival:
  - Welcome campus tour
  - Enrolment and administrative assistance
  - Orientation week organized by the Student Union
  - For more information: read our Welcome Booklet

# Double Degree Fees



## ■ Tuition fees

- ~~European students: €2,650\* per year~~
- ~~Non-European students: €4,150\* per year~~
- Real cost supported by the French Government: €17,000 per year

## ■ Partnership tuition fees

- Double Degree Udelar – Telecom Paris: no tuition fees

## ■ Student and Campus Life Contribution (CVEC): €95\*

CVEC is collected to promote social, health, cultural and sports support and assistance for students - <https://cvec.etudiant.gouv.fr/>

\*2022-2023 Fees

# Average Living Costs

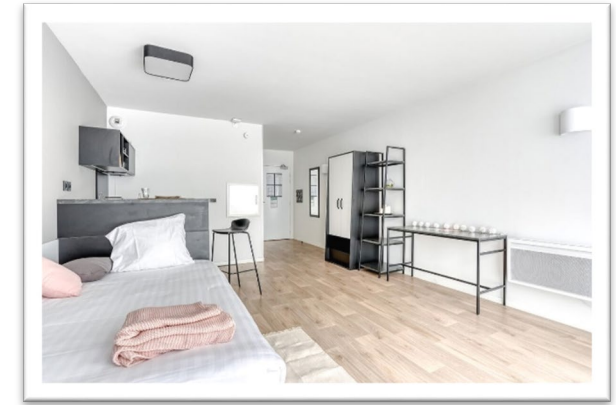


## ■ Average living costs in Paris: ~ €900 / month

- Accommodation: minimum €500 / month
- Public transportation card: €38 / month (annual student pass: €350)
- Social security: free
- Complementary Healthcare: from €10 to €40 /month
- Food expenses: ~ €300 / month
  - A meal at the school cafeteria: ~ €3
- Telecommunications: from €2 / month
- Visa for non-European students : €60

# Accommodation

- **Located on campus, in the cities nearby and in Paris**
  - Look at the map on our [website](#) to locate various options
  - Budget: from 350€ to 800€ a month
  - Possibility of an accommodation allowance
  - Dedicated assistance team to be contacted on [logement@telecom-paris.fr](mailto:logement@telecom-paris.fr)
- **Apply through the one-stop-shop [“Guichet Unique Paris Saclay”](#)**
  - Affordable rentals (~400€), close to the campus
  - Partnerships: allocated rooms for Télécom Paris students
  - Applications in June
- **Apply to other private or public (Crous) housing**
  - Cité Universitaire in Paris, accessible by train
  - Other partnerships (listed on our website)
- **A room in a private home through [“Sciences Accueil”](#)**
  - Near the campus or in Paris / + Administrative assistance





# A Lively Campus Life

## Culture & Music:

- ✓ Theater,
- ✓ Photos, videos
- ✓ Orchestra,
- ✓ Salsa,
- ✓ Télécom Sound & Magic,
- ✓ etc

## Student Union:

- ✓ Integration activities, Ski Weekend, etc.
- ✓ Coordinates all clubs and association activities
- ✓ Buddy program by senior students

## Sports:

- ✓ One dedicated afternoon per week
- ✓ Organized by Bureau des Sports (BDS)
- ✓ 15 disciplines: sailing, badminton, handball, tennis, volleyball, gym, rugby, etc.
- ✓ Access to numerous sport facilities on the campus



## For any further information

### ■ Visit our:

- [Website: www.telecom-paris.fr/en](http://www.telecom-paris.fr/en)
- [360° virtual tour](#)
- Course catalogues:
  - [Double Degree program](#)
  - [Exchange courses catalogue](#)

### ■ Follow us on [Facebook](#), [Twitter](#), [LinkedIn](#); [Instagram](#) and [YouTube](#)

### ■ Contact us for:

- Information: [international@telecom-paris.fr](mailto:international@telecom-paris.fr)
- Enrolments: [incoming@telecom-paris.fr](mailto:incoming@telecom-paris.fr)







# Q&A session

