
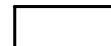

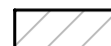


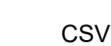
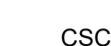



REFERENCIAS

-  Pilar que continua
-  Pilar que muere
-  Pilar que nace
-  Losa descendida
-  Niveles
-  Cota Superior Losa
-  Cota Superior Viga
-  Cota Superior Cabezal
-  Cota Superior Pilote

MATERIALES

HORMIGÓN	C25, resistencia característica de 250 kg/cm ² o los 28 días según UNIT 972
ACERO	Barros conformados ADN500, según UNIT 843 y UNIT 968

RECURRIMIENTOS

VIGAS	20 mm
PILARES	20 mm
LOSAS	20 mm
FUNDACIONES	40 mm

EMPALMES DE ARMADURA

Es la indicada en tabla según UNIT 1050-2005

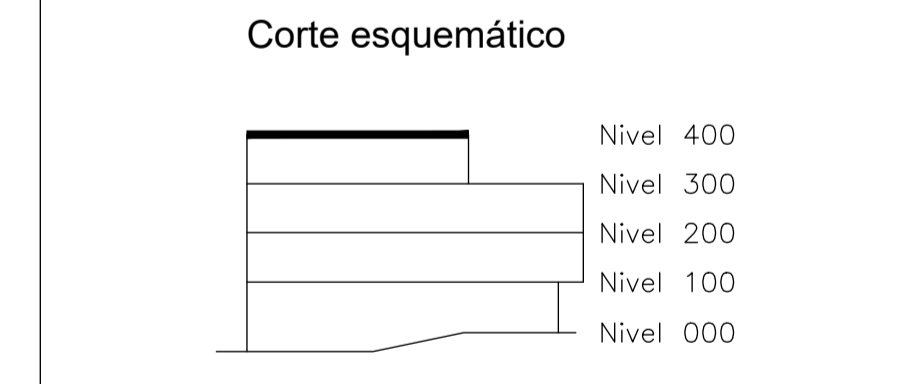
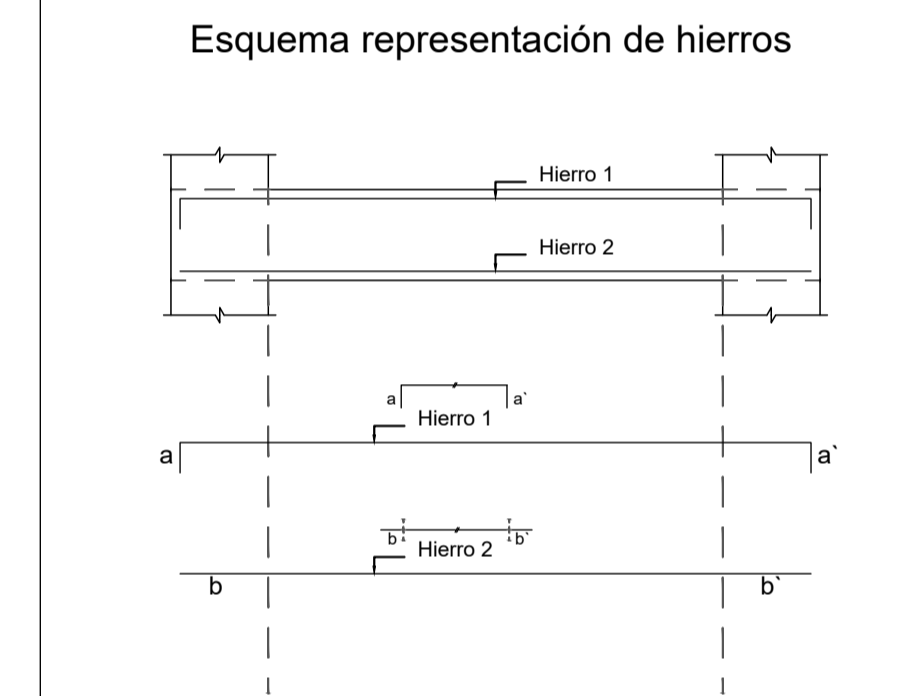
Ø [mm]	6	8	10	12	16	20	25
VIGAS Y LOSAS	45	55	70	85	115	165	250
PILARES	30	40	50	60	80	120	185

DOBLADO DE ARMADURA

ESTRIBOS Y PATILLAS GENERALES	Díámetro del mandril 3.5φ
	Díámetro del mandril 12φ

Aclaraciones

Todas las dimensiones y niveles en centímetros.



FACULTAD DE INGENIERIA

OBRA: PROYECTO 1 - 2015

PLANO: VIGAS INDICE 400

PROFESORES: Rodríguez - Dieste - Pertusso

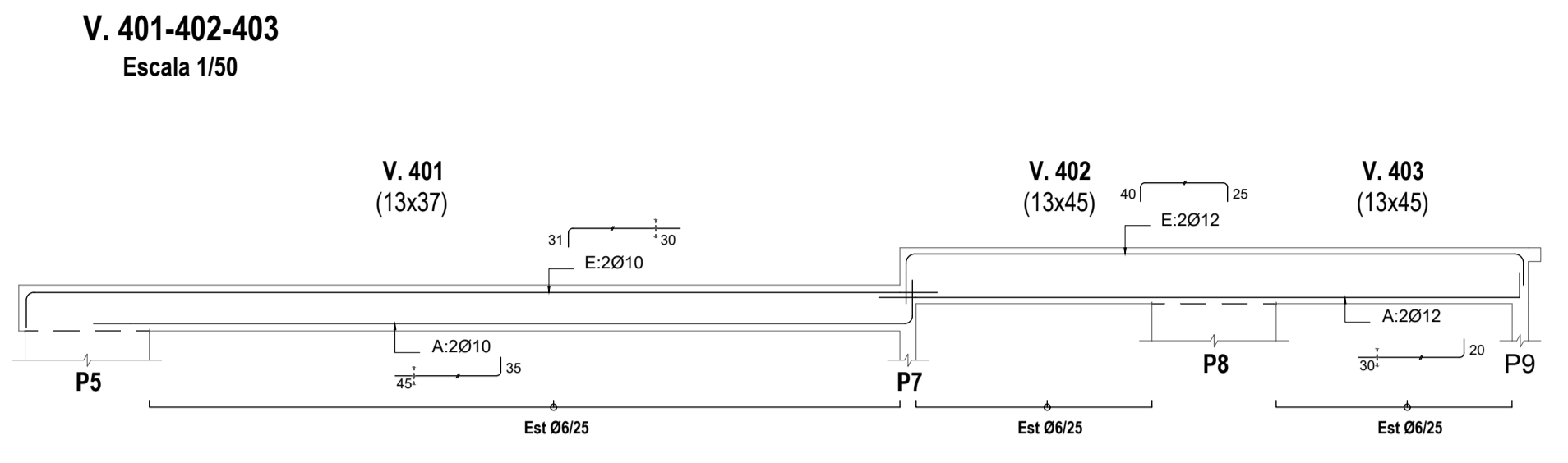
GRUPO: Barbier - Colman - Ferreira

FECHA: 5 febrero 2017

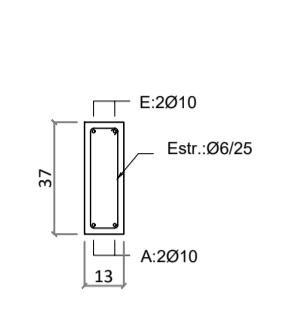
ESCALA: 1:50

FORMATO: A1

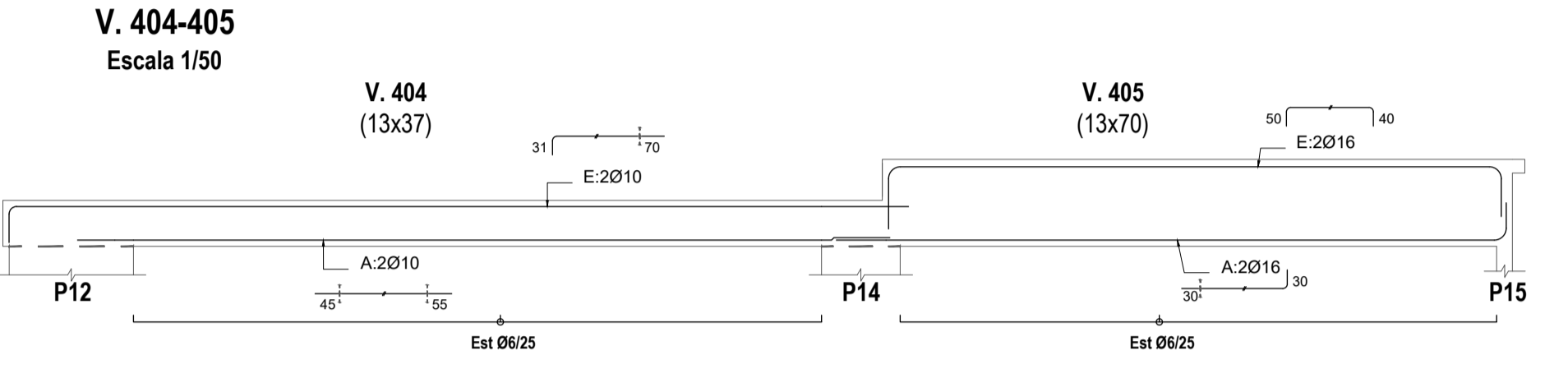
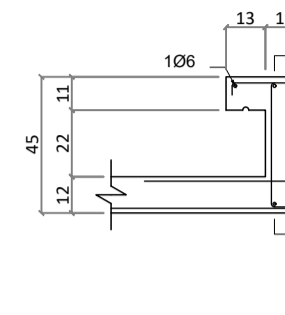
PLANO N°: **E3.8**



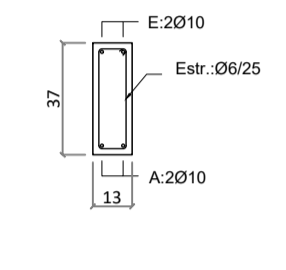
Sección V. 401
Escala 1/25



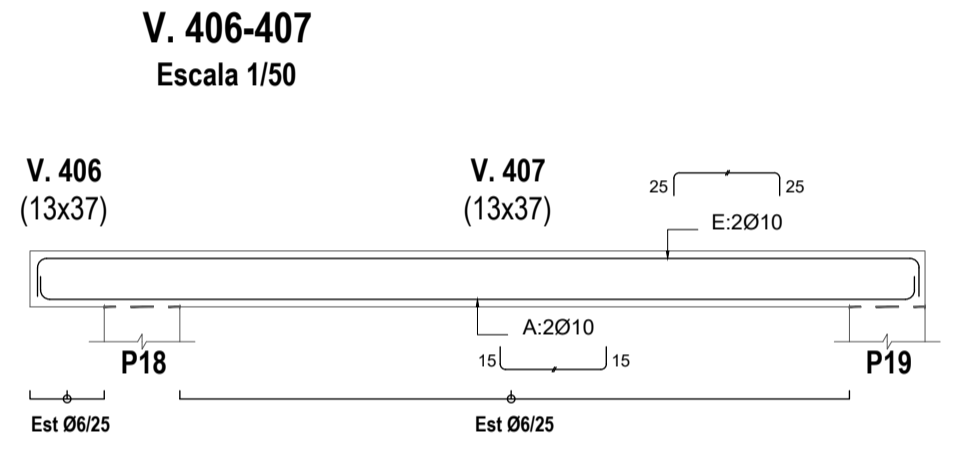
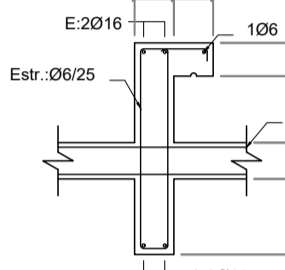
Sección V. 402-403
Escala 1/25



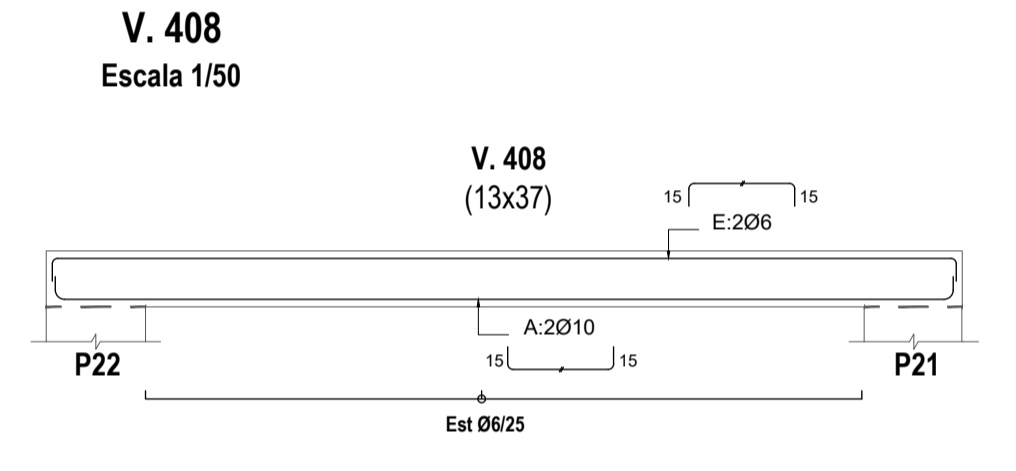
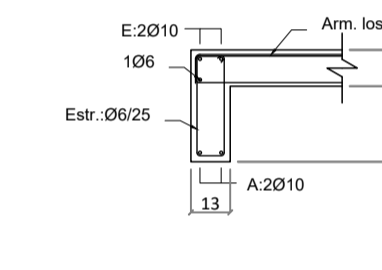
Sección V. 404
Escala 1/25



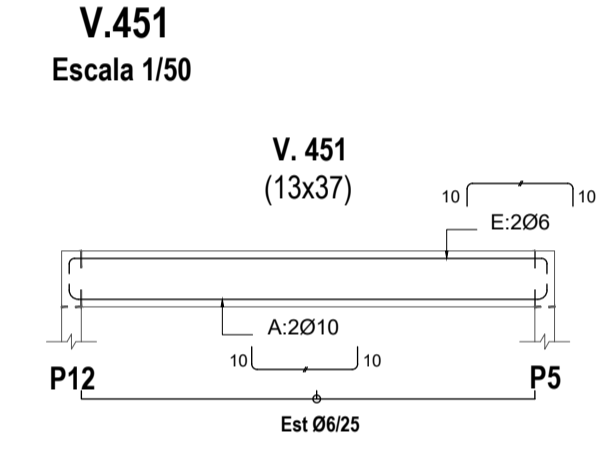
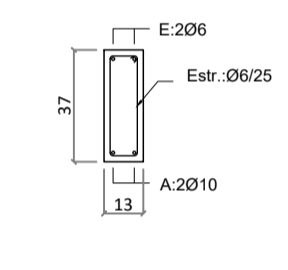
Sección V. 405
Escala 1/25



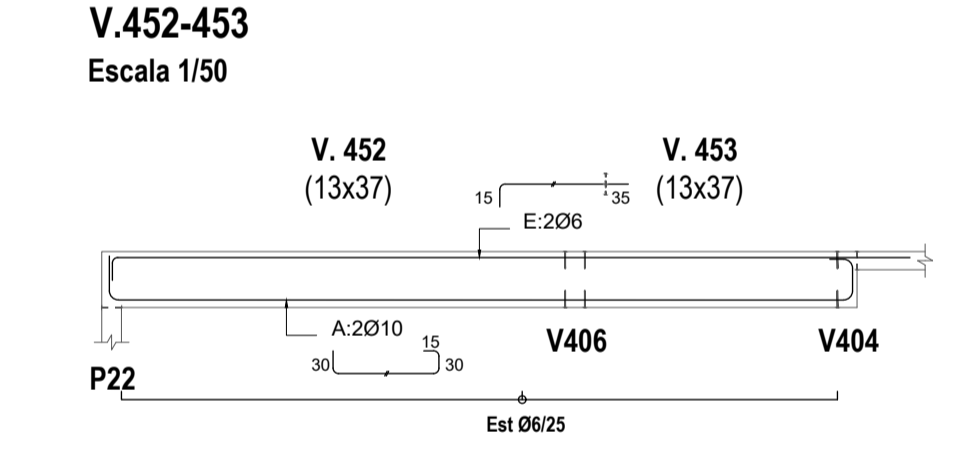
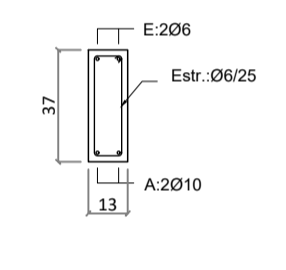
Sección V. 406-407
Escala 1/25



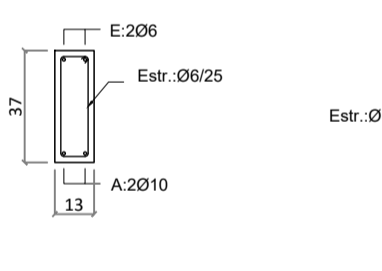
Sección V. 408
Escala 1/25



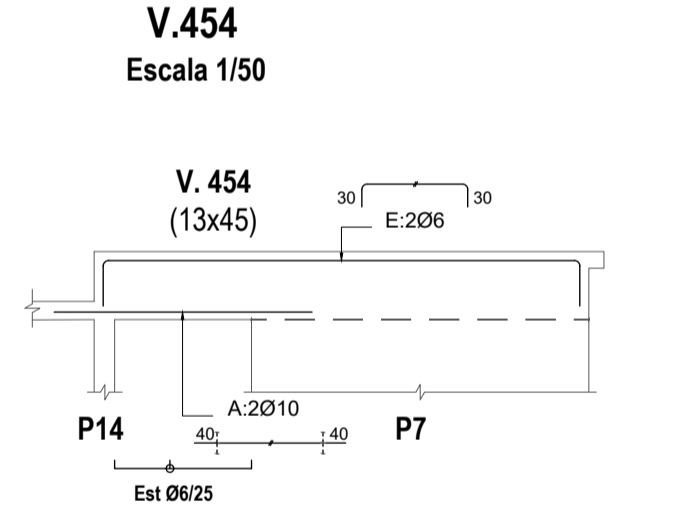
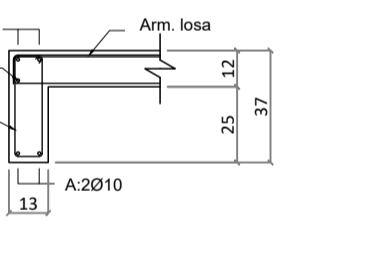
Sección V. 451
Escala 1/25



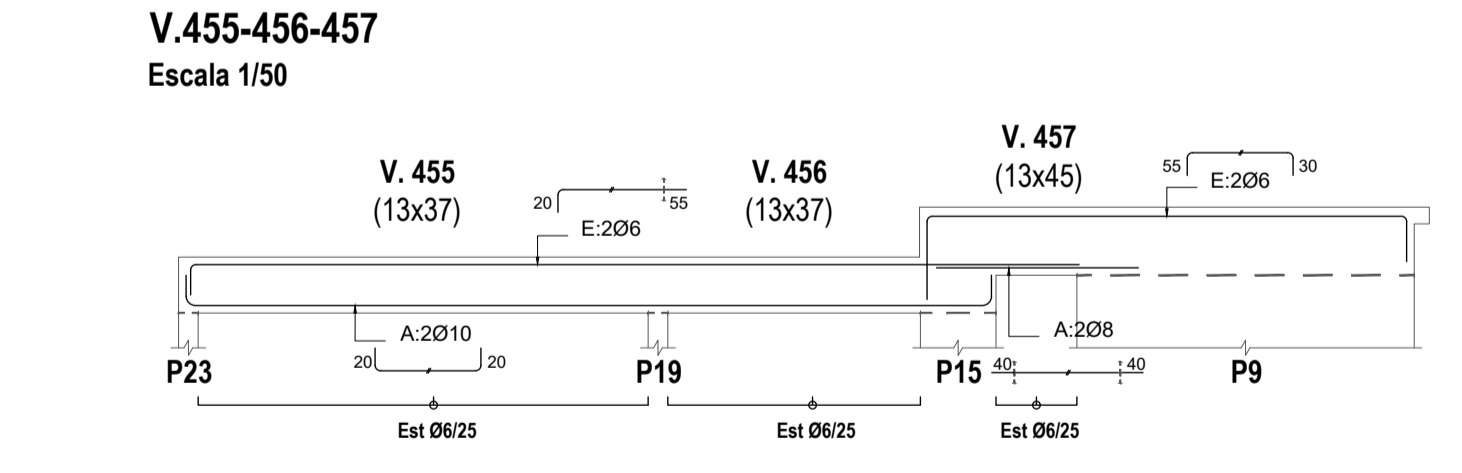
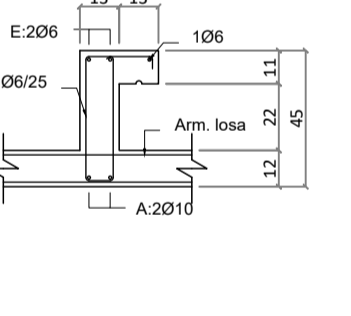
Sección V. 452
Escala 1/25



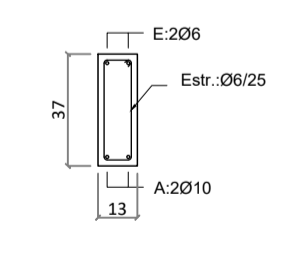
Sección V. 453
Escala 1/25



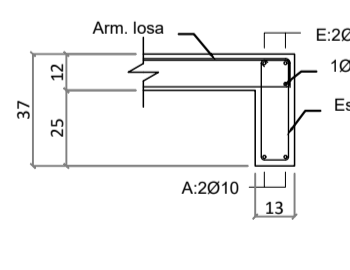
Sección V. 454
Escala 1/25



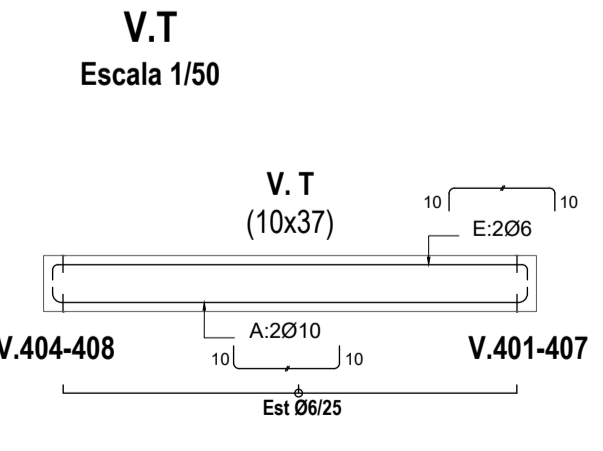
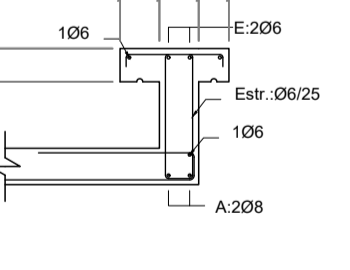
Sección V. 455
Escala 1/25



Sección V. 456
Escala 1/25



Sección V. 457
Escala 1/25



Sección V. T
Escala 1/25

