



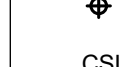
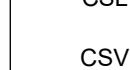





**REFERENCIAS**

-  Pilar que continua
-  Pilar que muere
-  Pilar que nace
-  Losa descendida
-  Niveles
-  Cota Superior Losa
-  Cota Superior Viga
-  Cota Superior Cabezal
-  Cota Superior Pilote

**MATERIALES**

**HORMIGÓN** C25, resistencia característica de 250 kg/cm<sup>2</sup> o los 28 días según UNIT 972

**ACERO** Barras conformados ADN500, según UNIT 843 y UNIT 968

**RECURRIMIENTOS**

VIGAS 20 mm  
 PILARES 20 mm  
 LOSAS 20 mm  
 FUNDACIONES 40 mm

**EMPALMES DE ARMADURA**

Es la indicada en tabla según UNIT 1050-2005

Ø [mm]	6	8	10	12	16	20	25
VIGAS Y LOSAS	45	55	70	85	115	165	250
PILARES	30	40	50	60	80	120	185

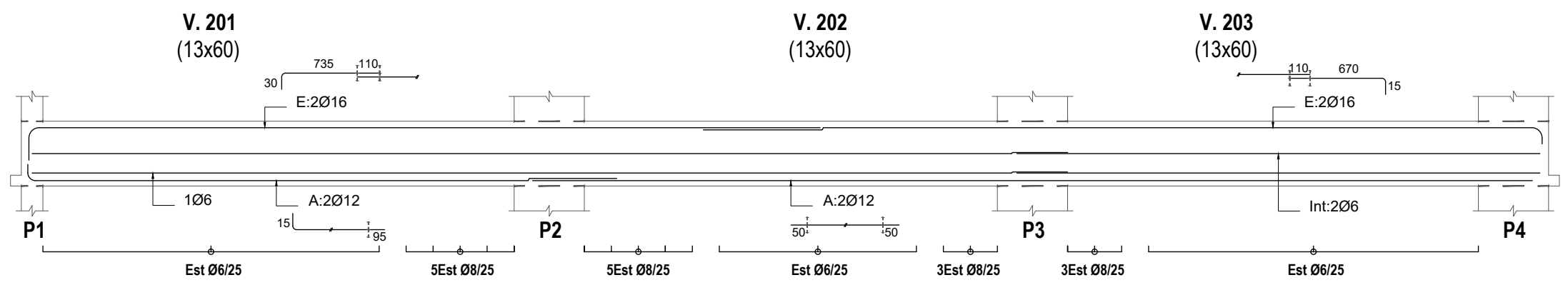
**DOBLADO DE ARMADURA**

ESTRIBOS Y PATILLAS GENERALES Diámetro del mandril 3.5φ

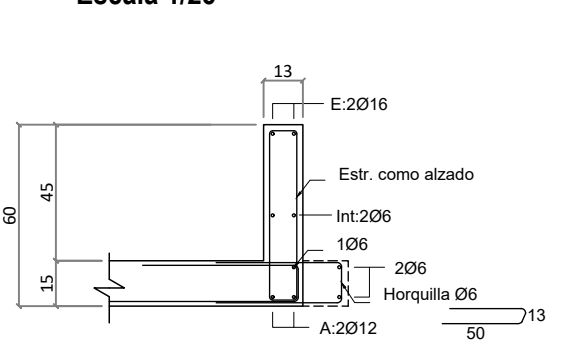
**Aclaraciones**

Todas las dimensiones y niveles en centímetros.

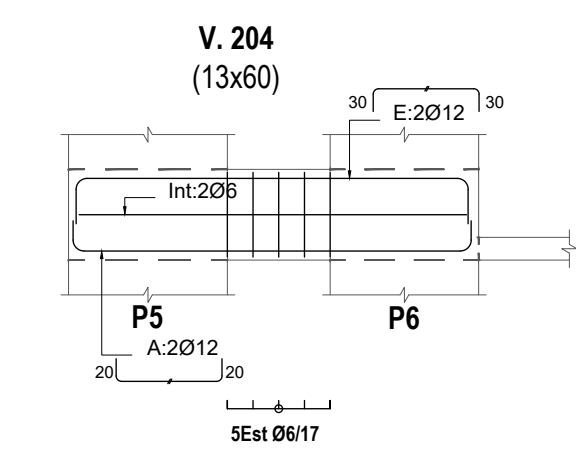
**V. 201-202-203**  
Escala 1/50



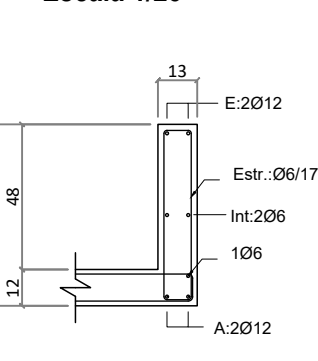
**Sección V. 201-202-203**  
Escala 1/25



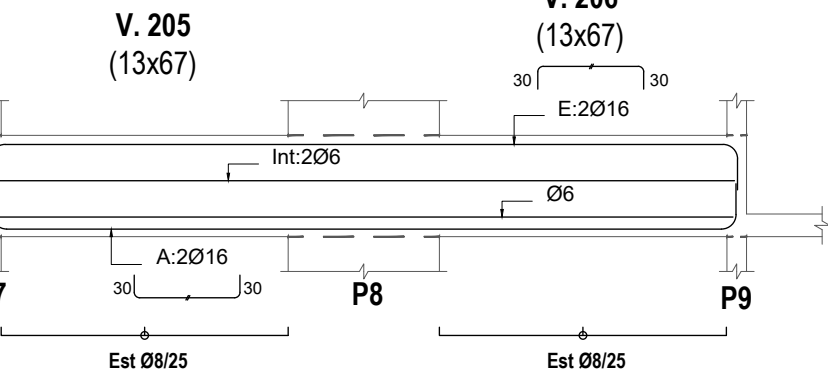
**V. 204**  
Escala 1/50



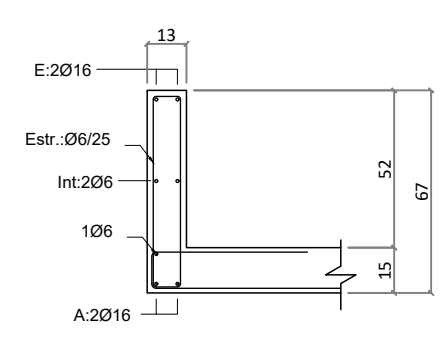
**Sección V. 204**  
Escala 1/25



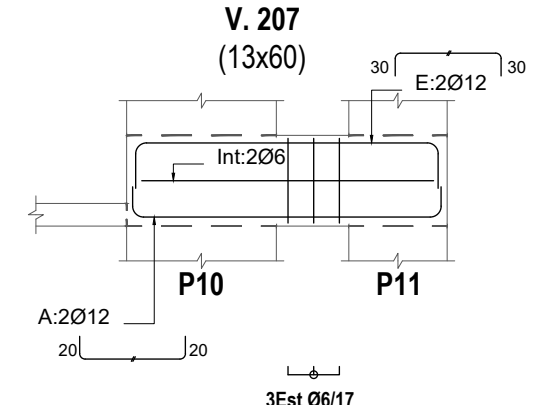
**V. 205-206**  
Escala 1/50



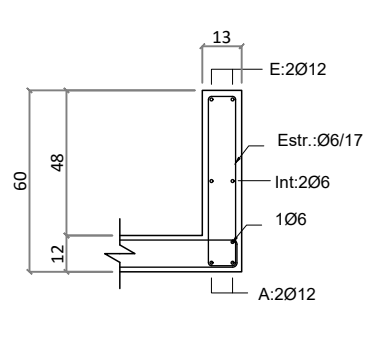
**Sección V. 205-206**  
Escala 1/25



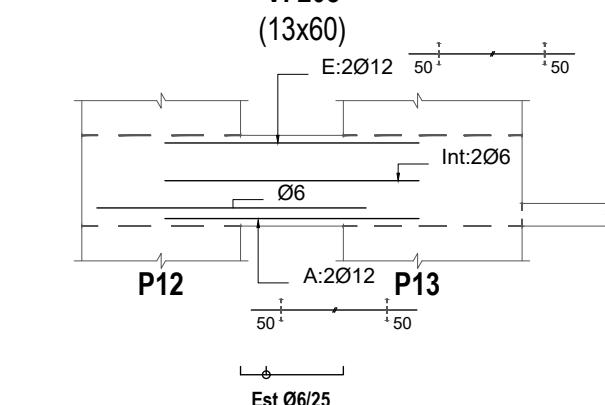
**V. 207**  
Escala 1/50



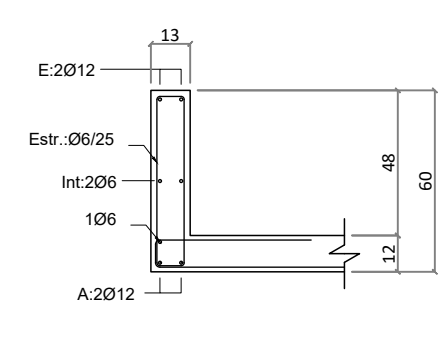
**Sección V. 207**  
Escala 1/25



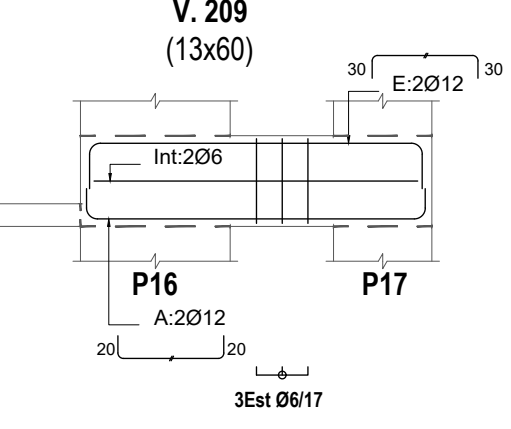
**V. 208**  
Escala 1/50



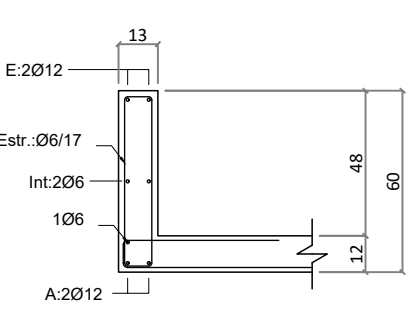
**Sección V. 208**  
Escala 1/25



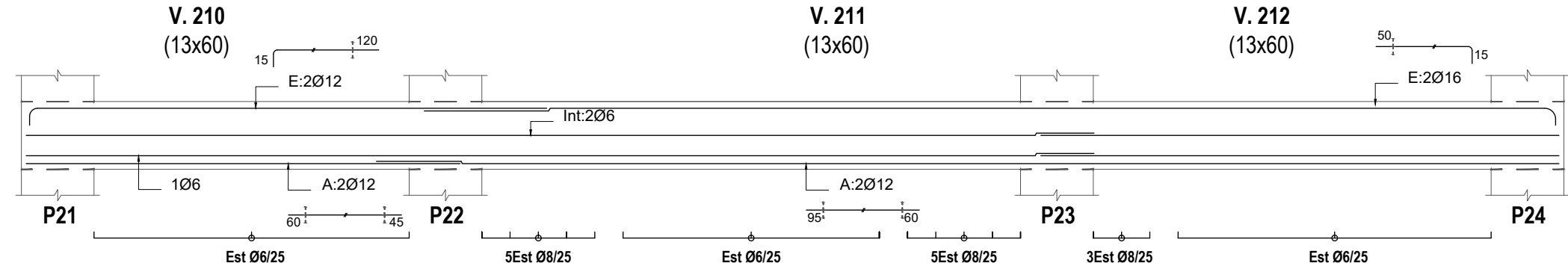
**V. 209**  
Escala 1/50



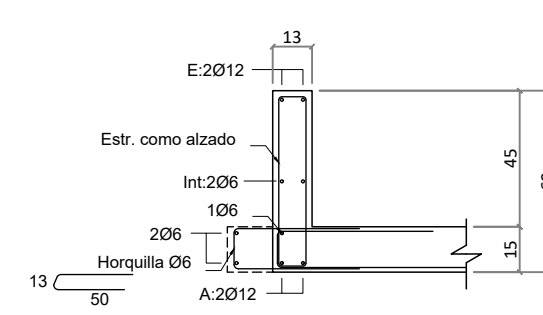
**Sección V. 209**  
Escala 1/25



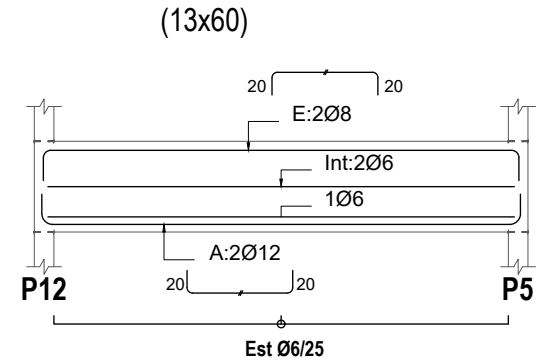
**V. 210-211-212**  
Escala 1/50



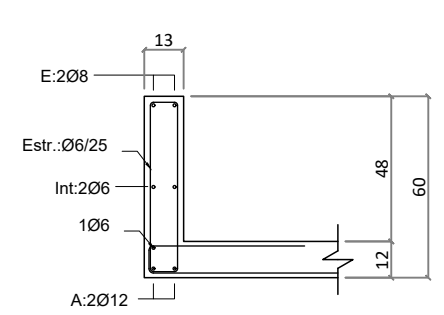
**Sección V. 210-211-212**  
Escala 1/25



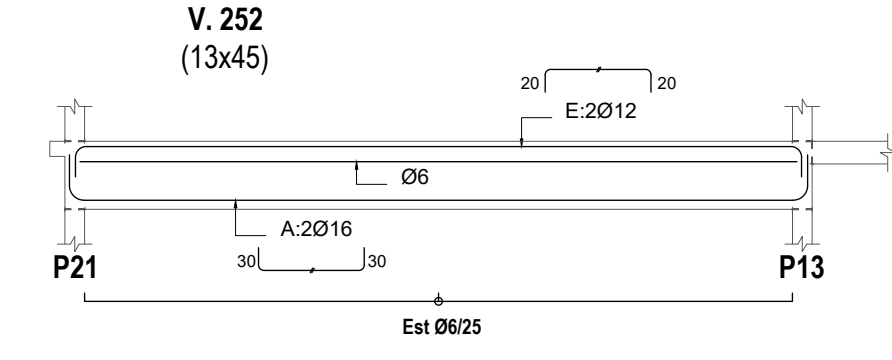
**V. 251**  
Escala 1/50



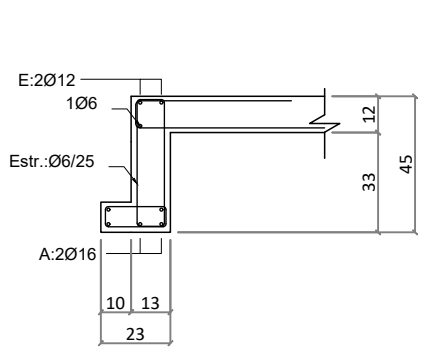
**Sección V. 251**  
Escala 1/25



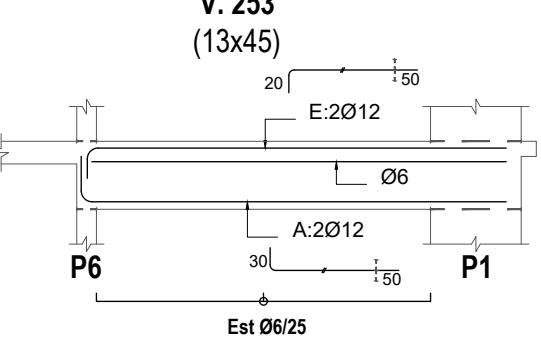
**V. 252**  
Escala 1/50



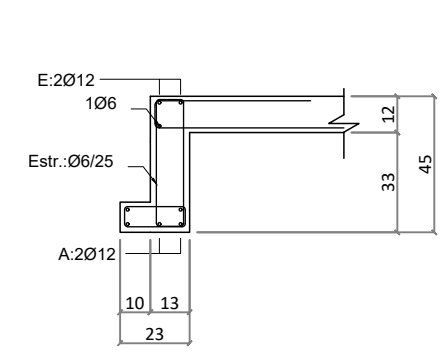
**Sección V. 252**  
Escala 1/25



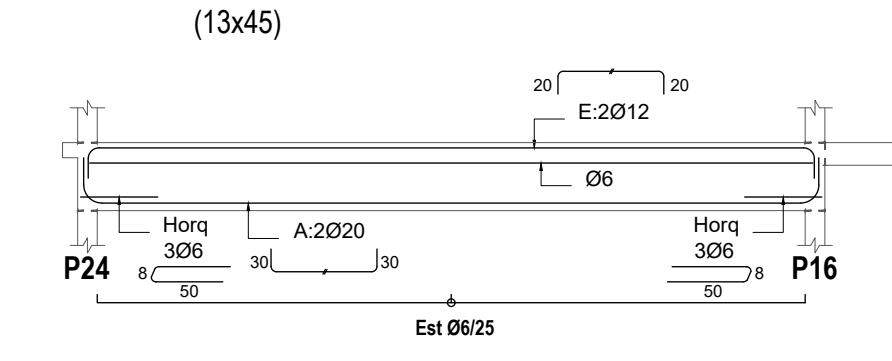
**V. 253**  
Escala 1/50



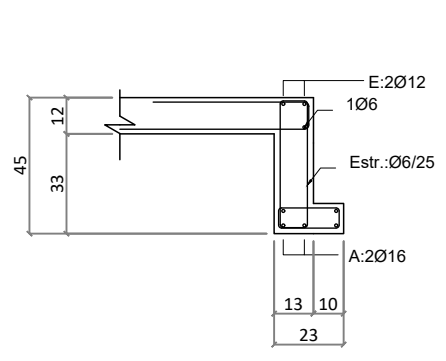
**Sección V. 253**  
Escala 1/25



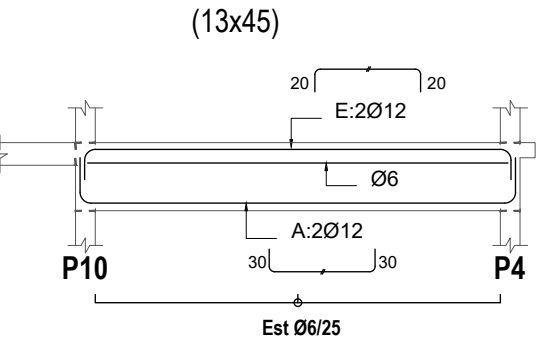
**V. 254**  
Escala 1/50



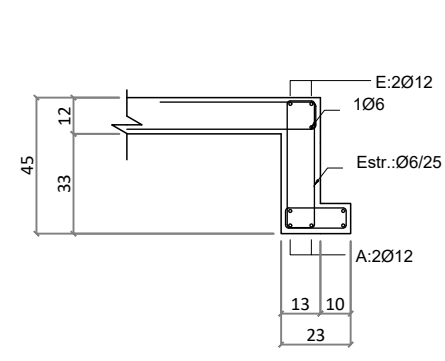
**Sección V. 254**  
Escala 1/25



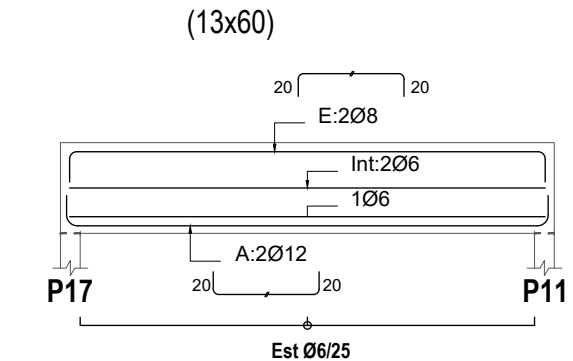
**V. 255**  
Escala 1/50



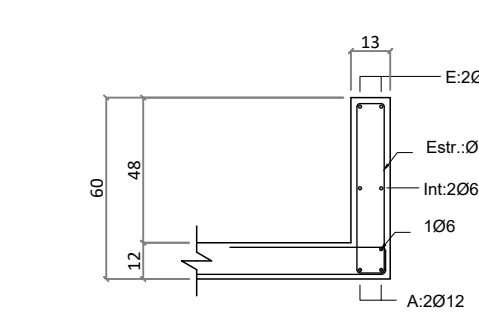
**Sección V. 255**  
Escala 1/25



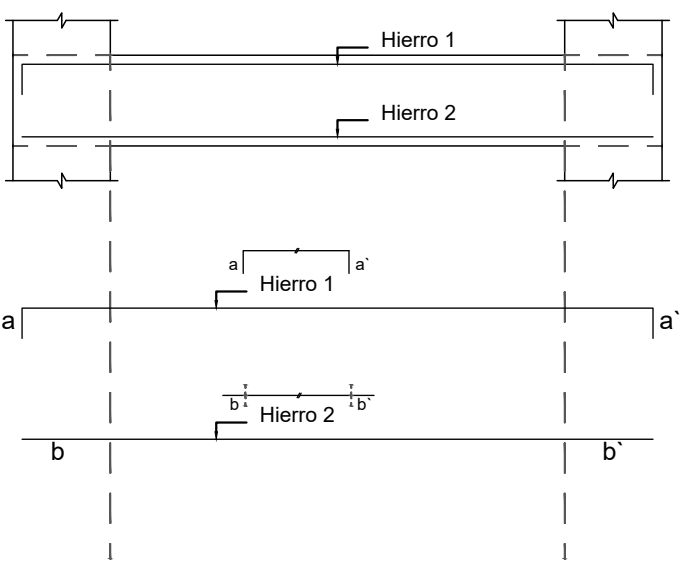
**V. 256**  
Escala 1/50



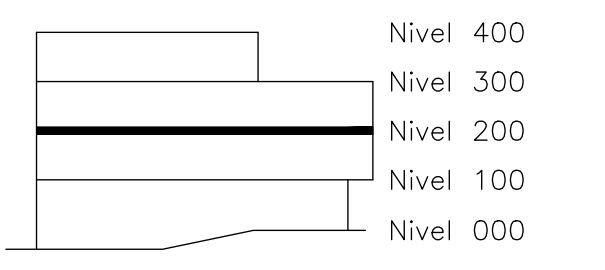
**Sección V. 256**  
Escala 1/25



**Esquema representación de fierros**



**Corte esquemático**



FACULTAD DE INGENIERIA

OBRA: PROYECTO 1 - 2015

PLANO: VIGAS INDICE 200

PROFESORES: Rodríguez - Dieste - Pertusso

PLANO N°:

GRUPO: Barbier - Colman - Ferreira

**E3.6**

FECHA: 5 febrero 2017

ESCALA: 1:50

FORMATO: A1