



ESTRUCTURAS DE MADERA

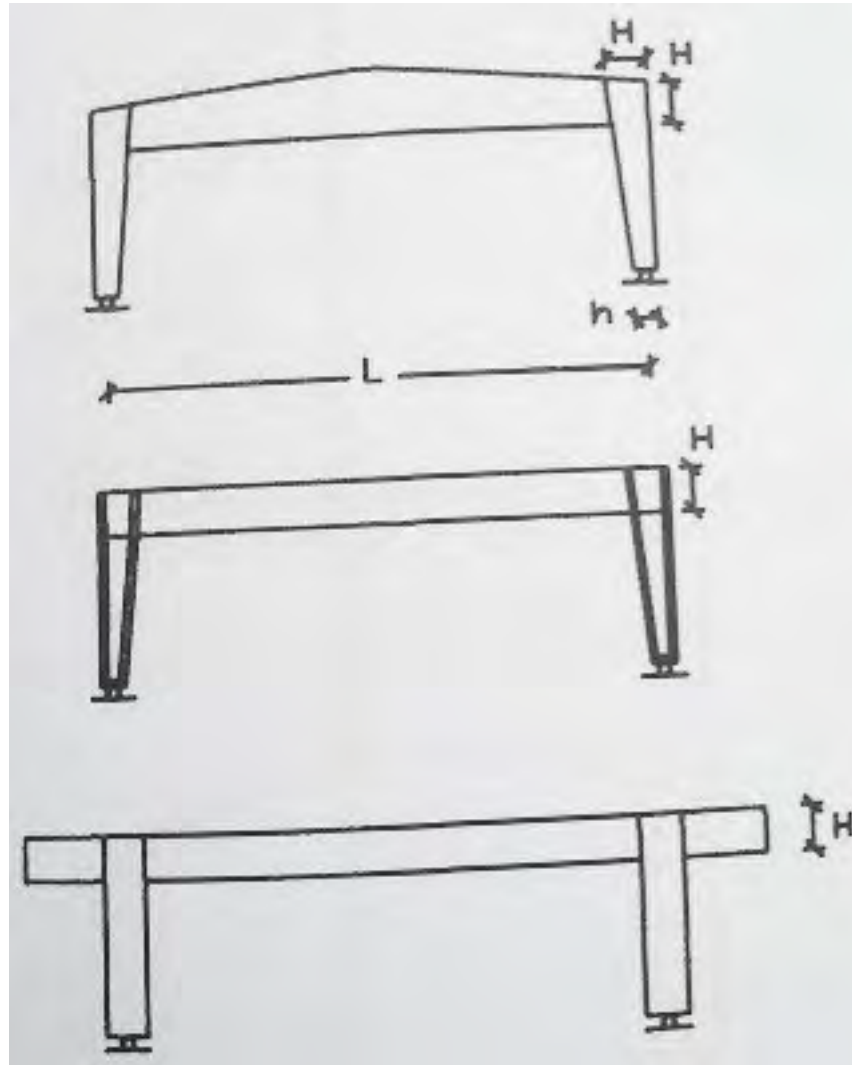
Pórticos y estructuras 3D

FACULTAD DE
INGENIERIA



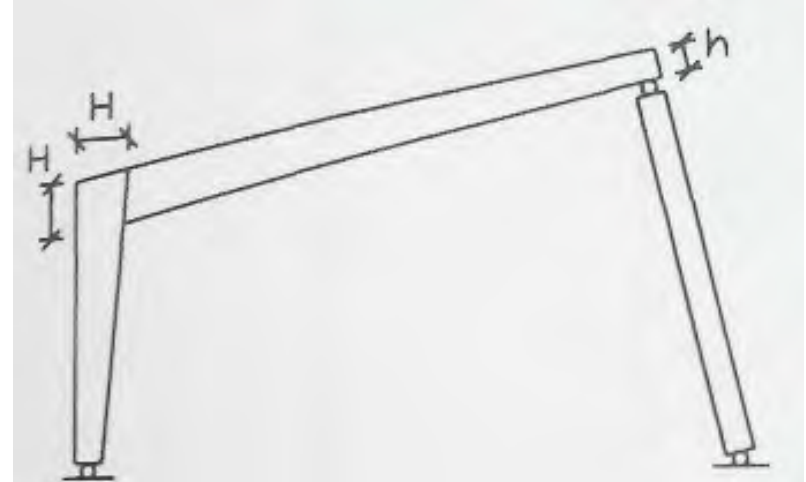
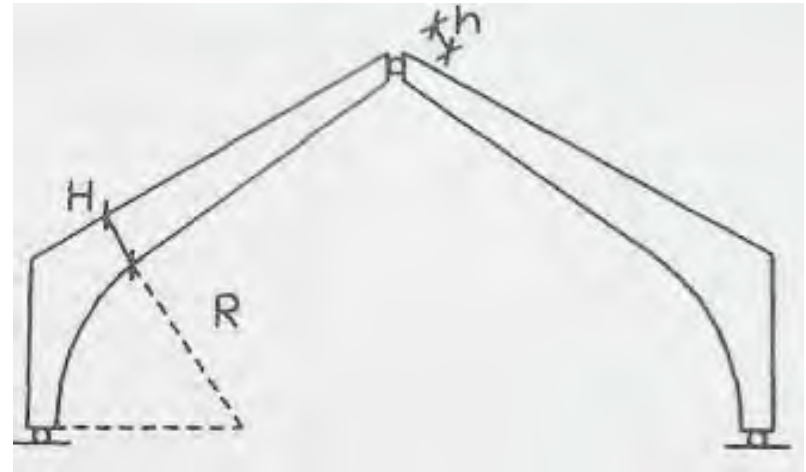
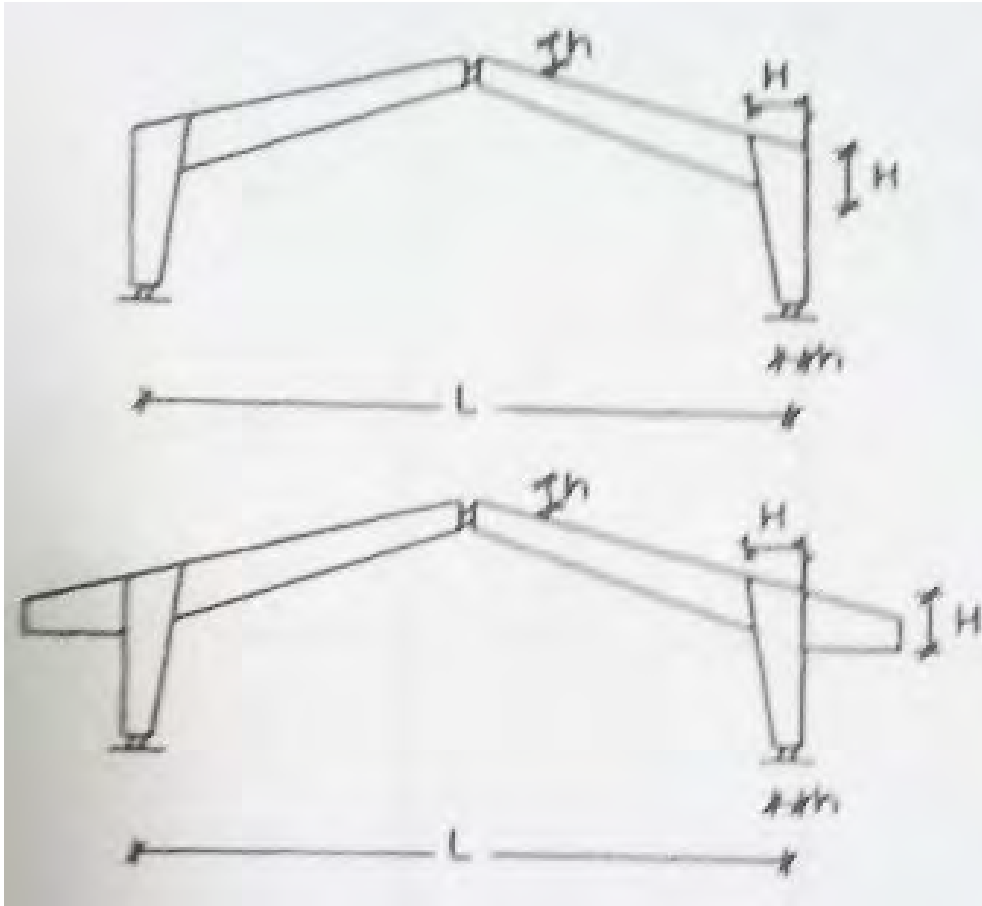
SISTEMAS ESTRUCTURALES M.L.E.

PÓRTICOS BIARTICULADOS



SISTEMAS ESTRUCTURALES M.L.E.

PÓRTICO TRIARTICULADO



SISTEMAS ESTRUCTURALES M.L.E.

PÓRTICO TRIARTICULADO

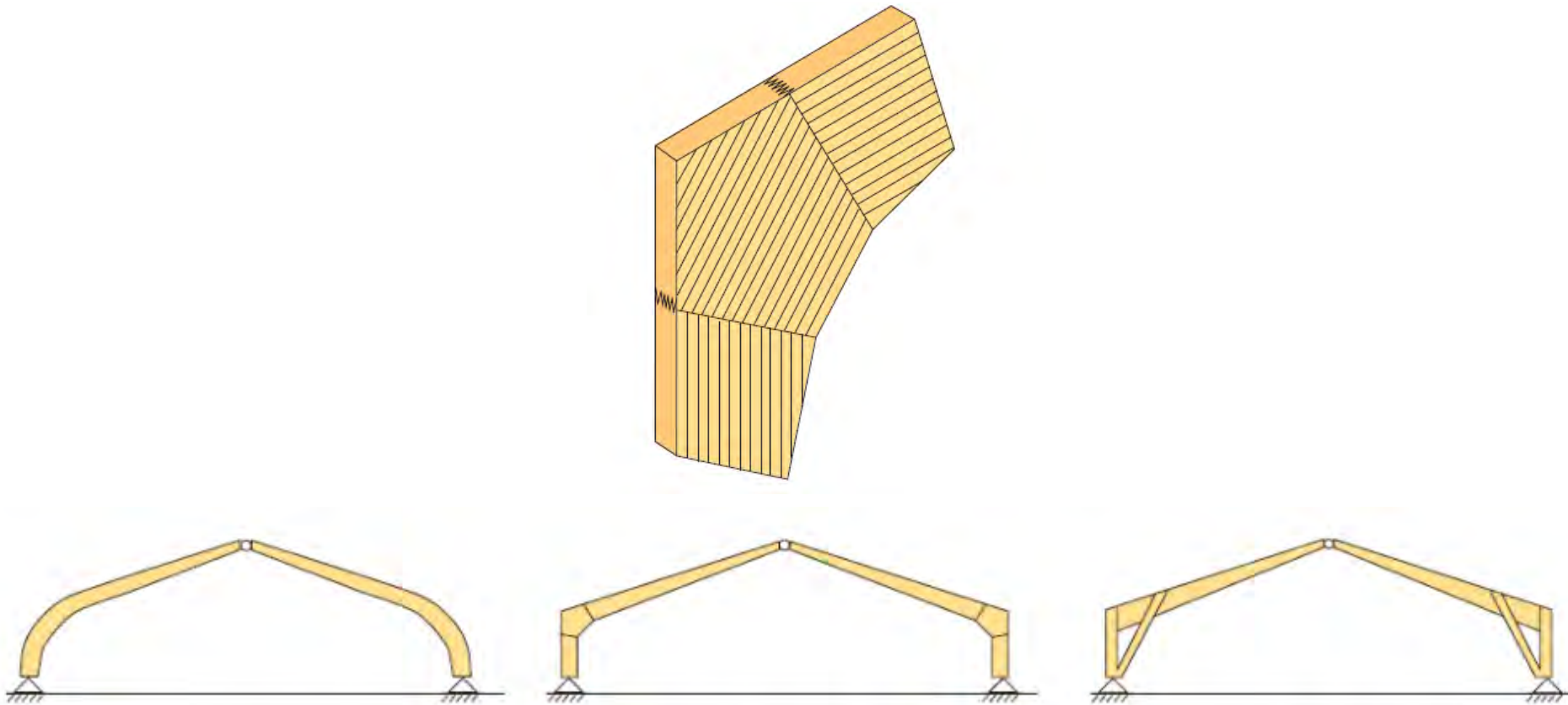
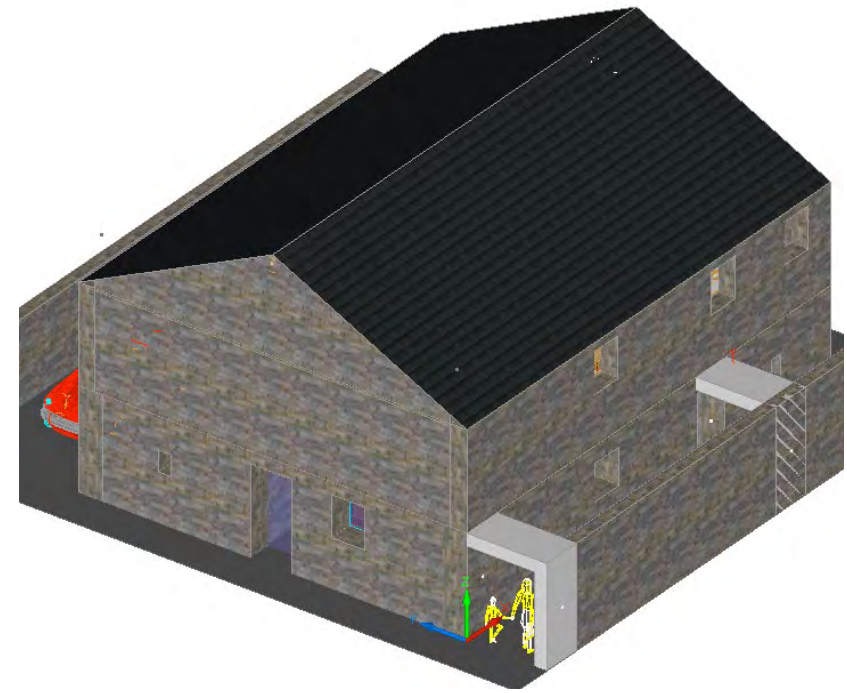
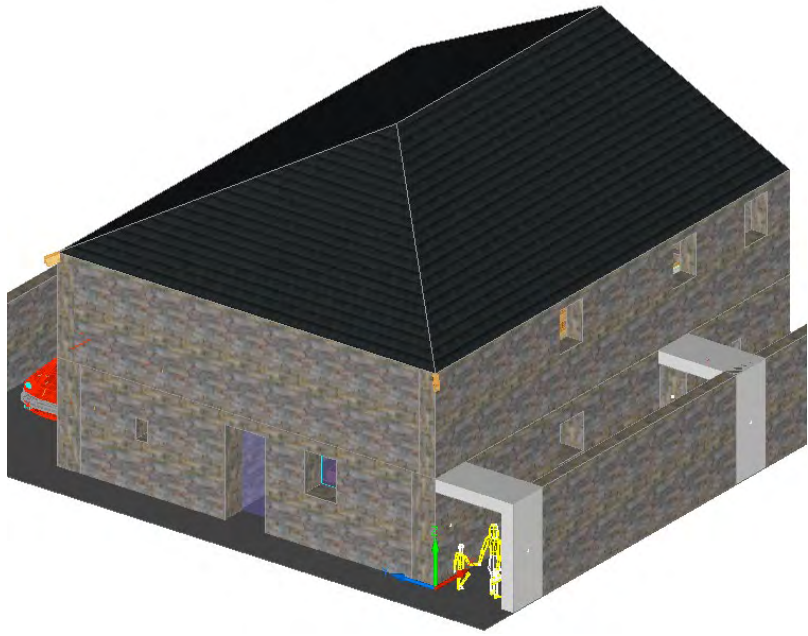


Figure 3.39: Examples of three-pin portal frames. a) Frame with curved haunches, b) frame with finger jointed haunches, c) built-up frame (knee braced frame).

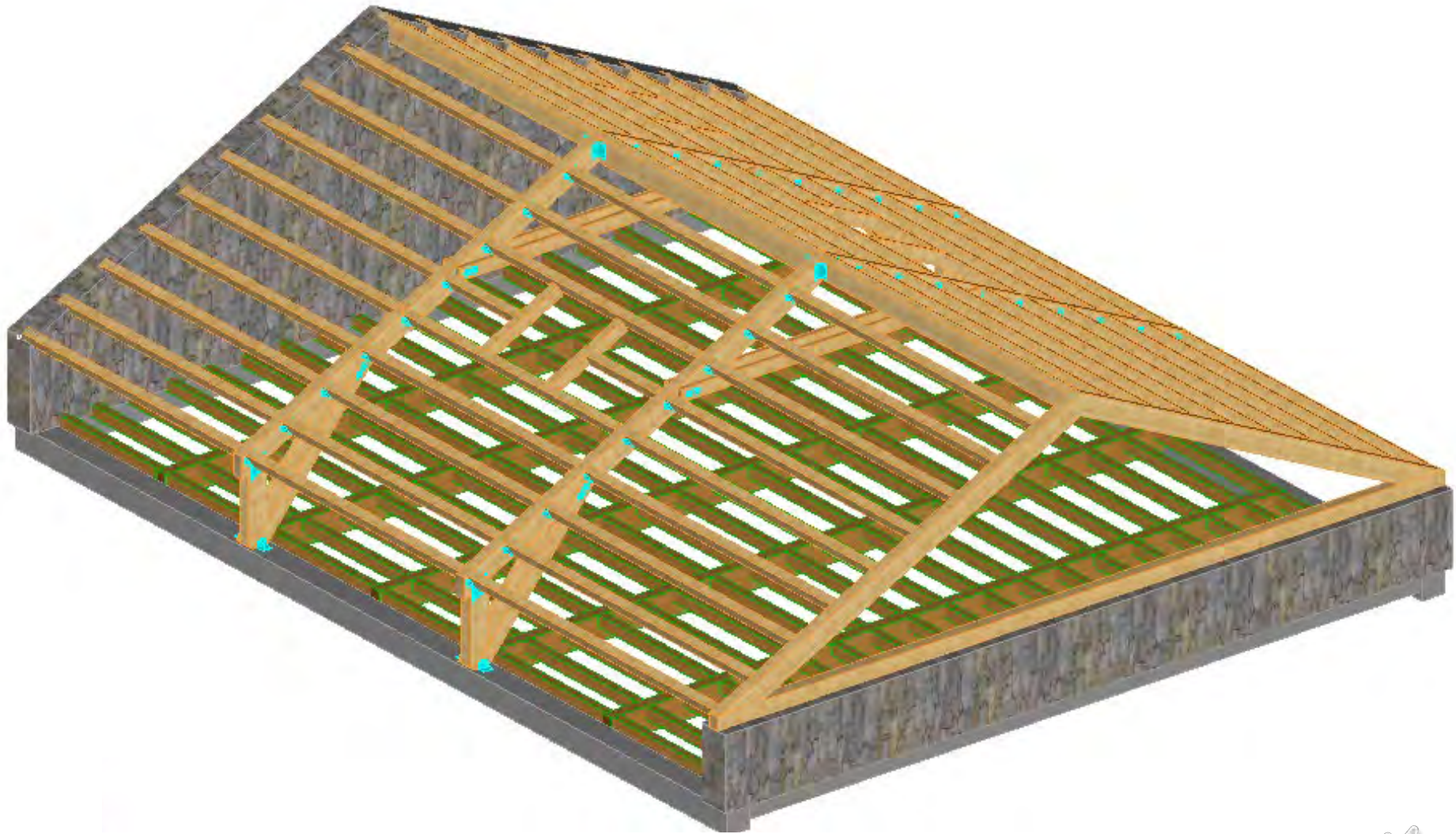


Pórtico
biarticulado
en cubierta





























Pórticos
de 2 alturas
para oficina





















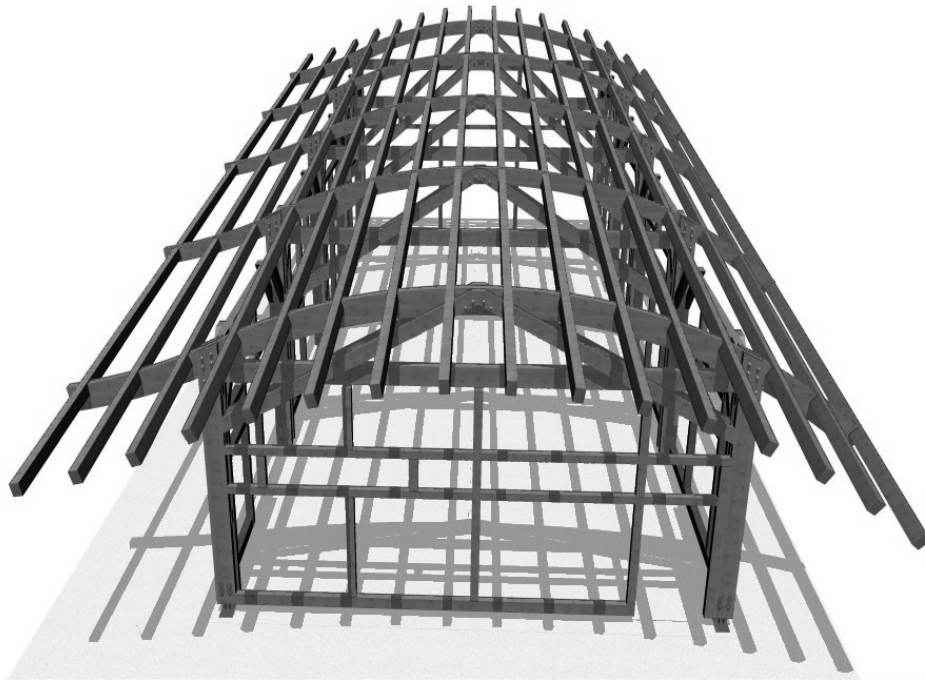


media madera
ingenieros consultores
www.media madera.com



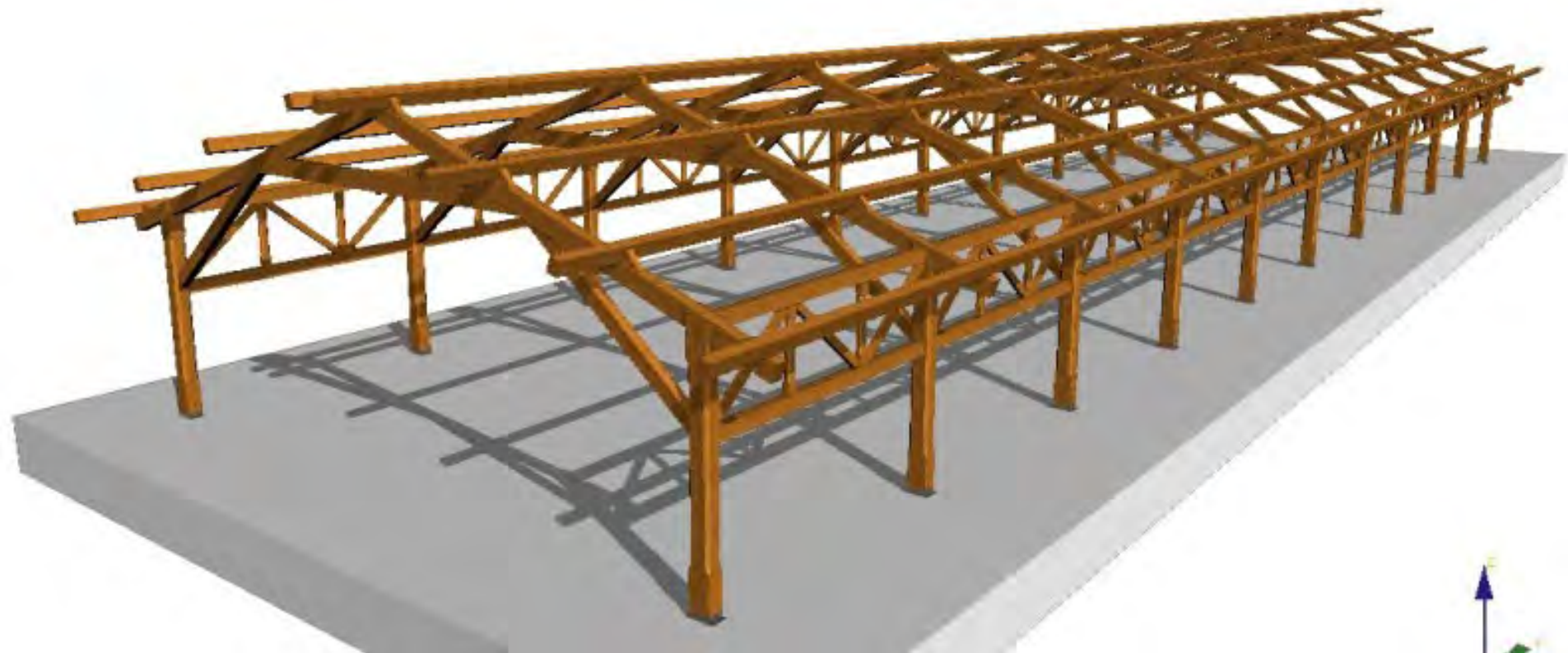
media madera
ingenieros consultores





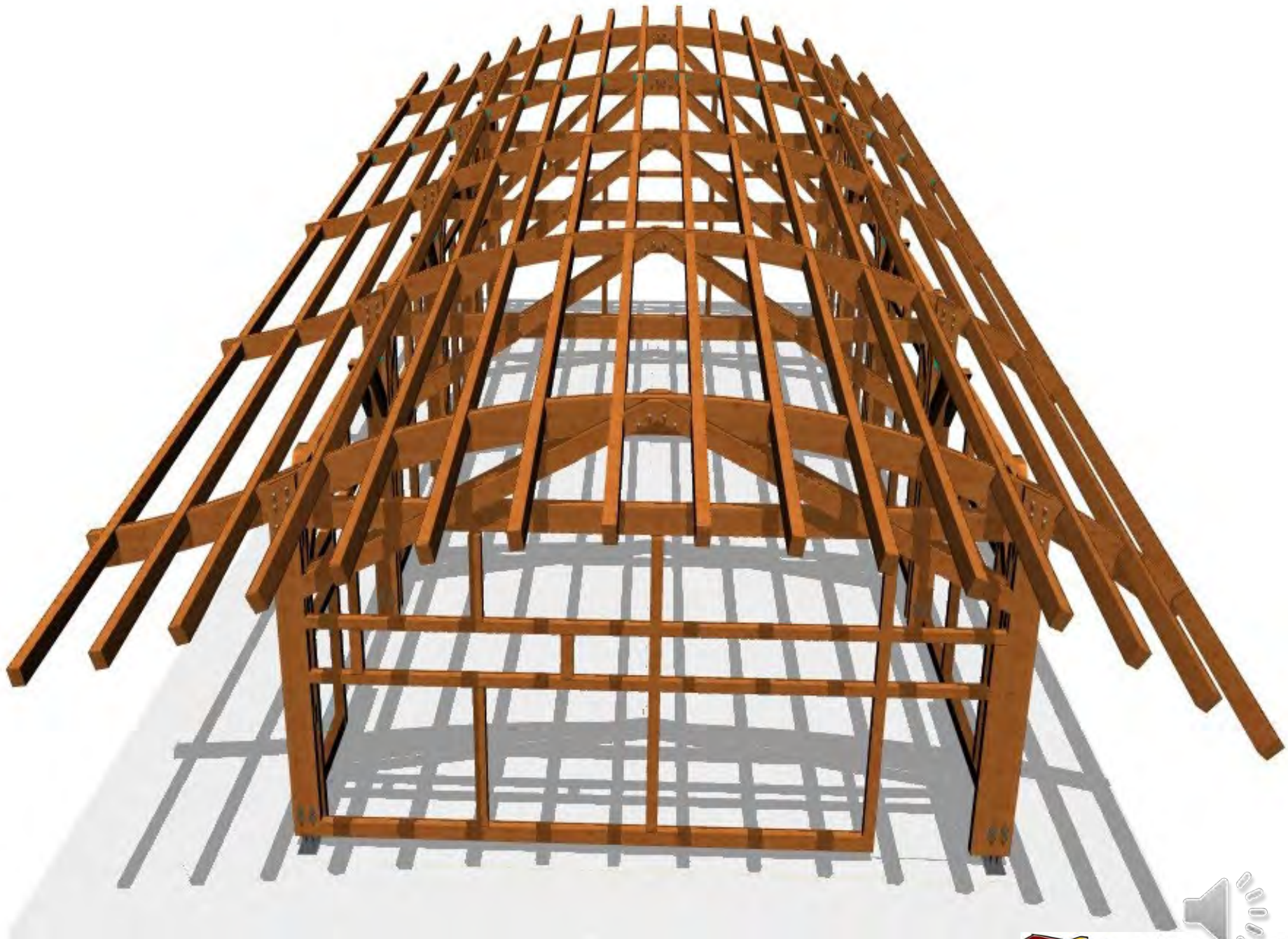
Pórticos bi y
triarticulados
otros













Pórticos
triarticulados
en naves





















Pórticos
triarticulados
Pabellón deportivo













Pórticos Campo golf





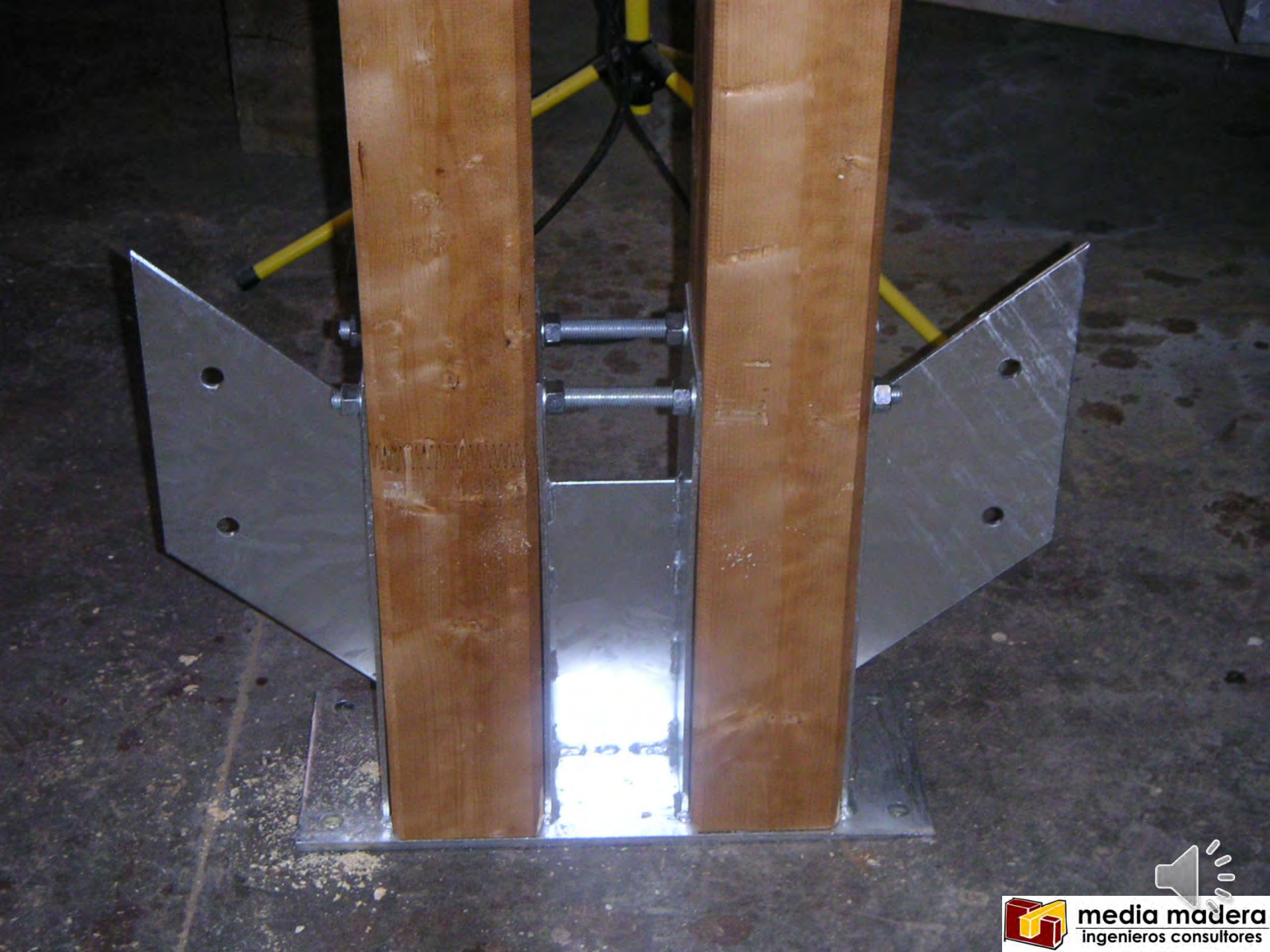
Blank wooden sign

CONSTRUCCIONES Y PROMOCIONES



media madera
ingenieros consultores







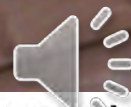






2x0117 02







Pórticos
biarticulados
Campo de golf





media madero
ingenieros consultores

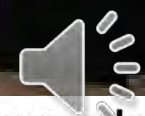




2006/07/05



media madera
ingenieros consultores





2006/07/05



media madero
ingenieros consultores





2006/07/05



media madero
ingenieros consultores



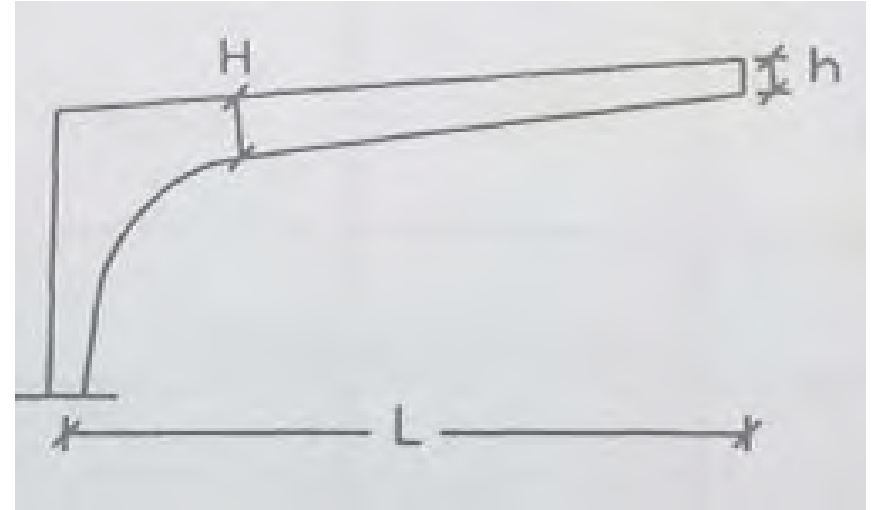
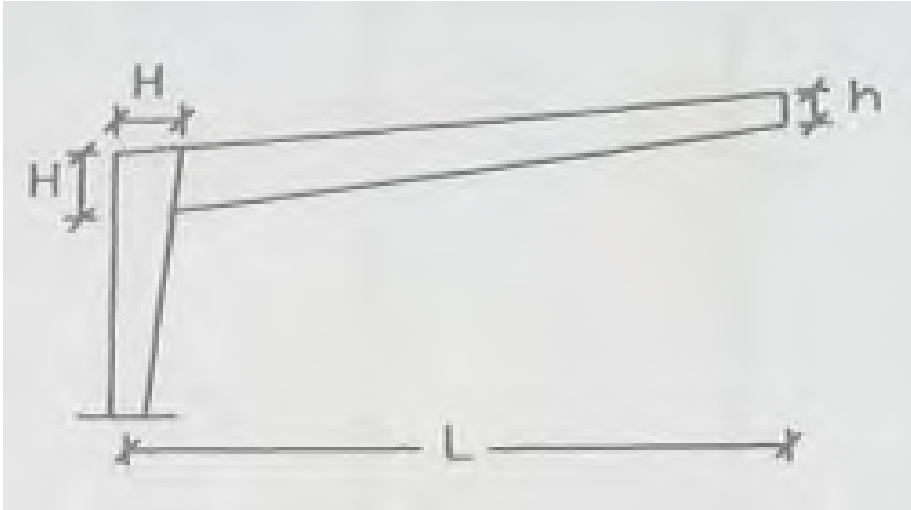


Pórticos en
voladizo
marquesina bus



SISTEMAS ESTRUCTURALES M.L.E.

PÓRTICO EN VOLADIZO













Pórticos

Edificio 7 plantas











xbau.ch

AEPLI

xbau.ch

xbau.ch

xbau.ch

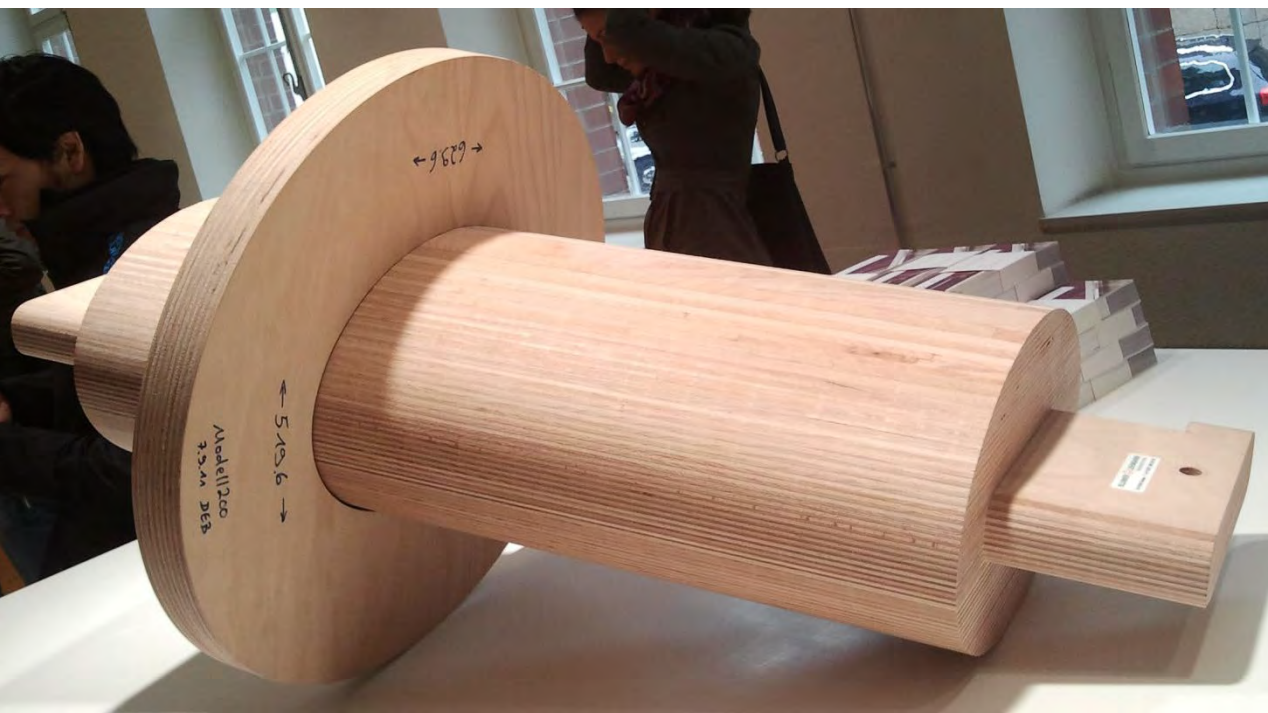
xbau.ch

AEPLI



















tamedia:



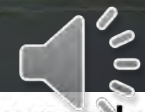






Estructura 3D
en cubierta
de bodega







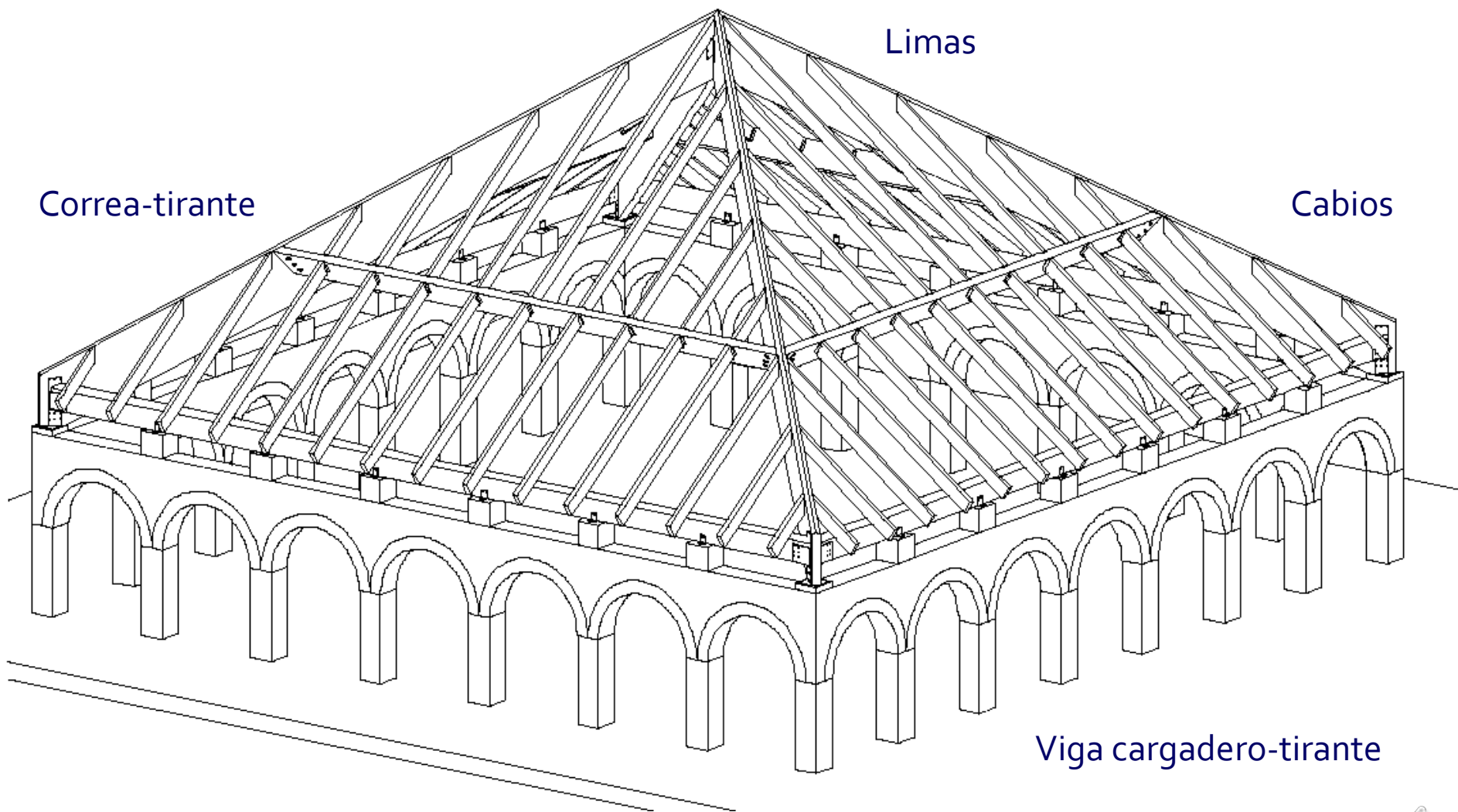
media madero
ingenieros consultores





media madera
ingenieros consultores

















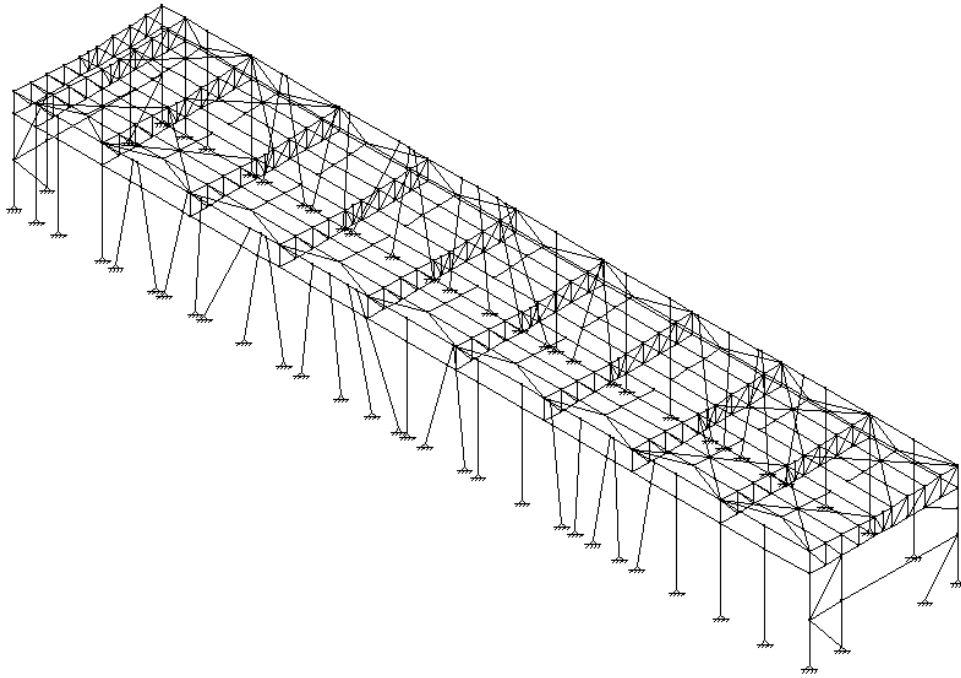
media madera
ingenieros consultores





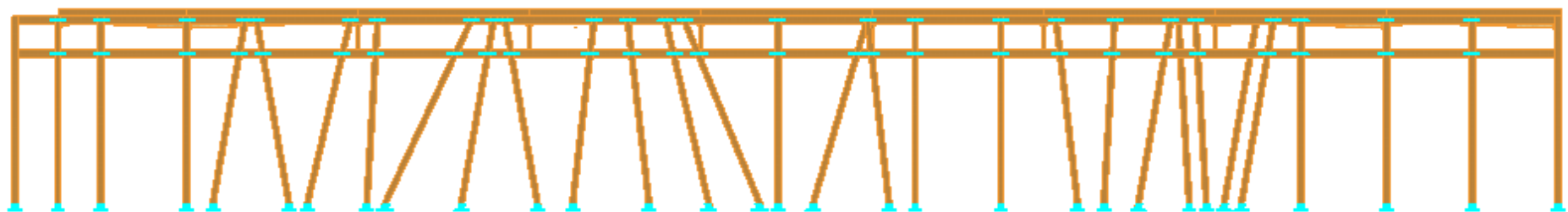
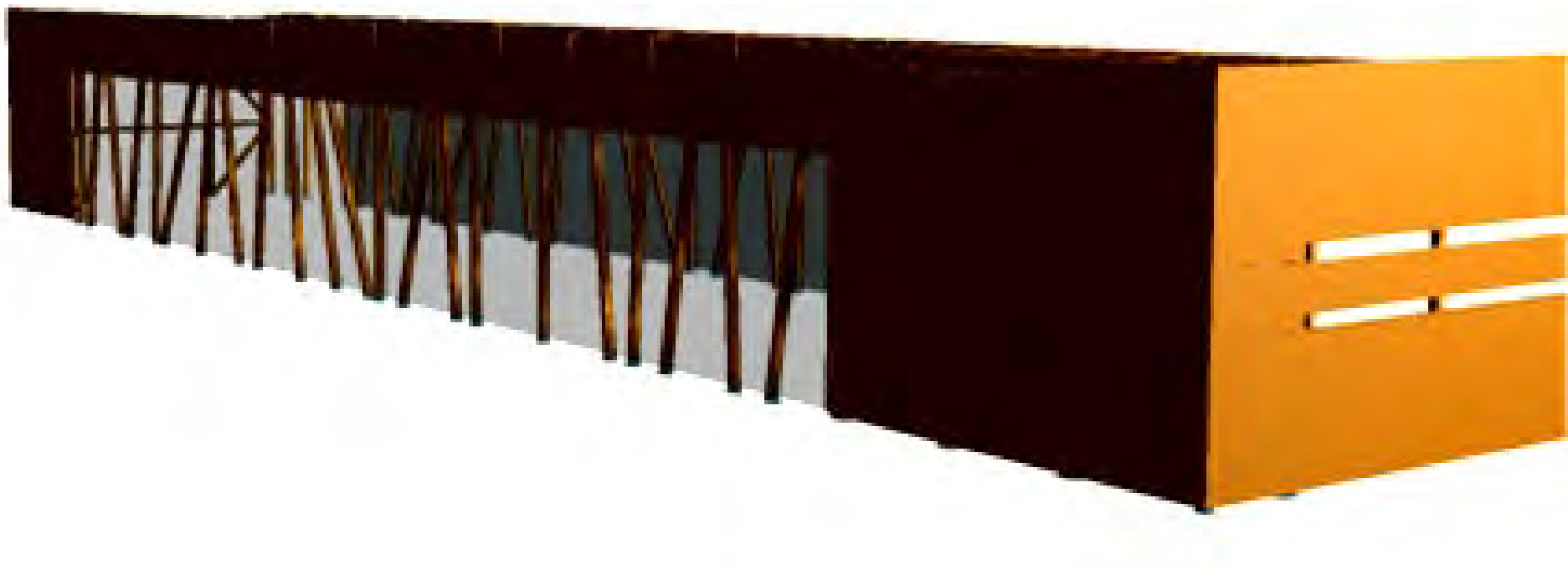


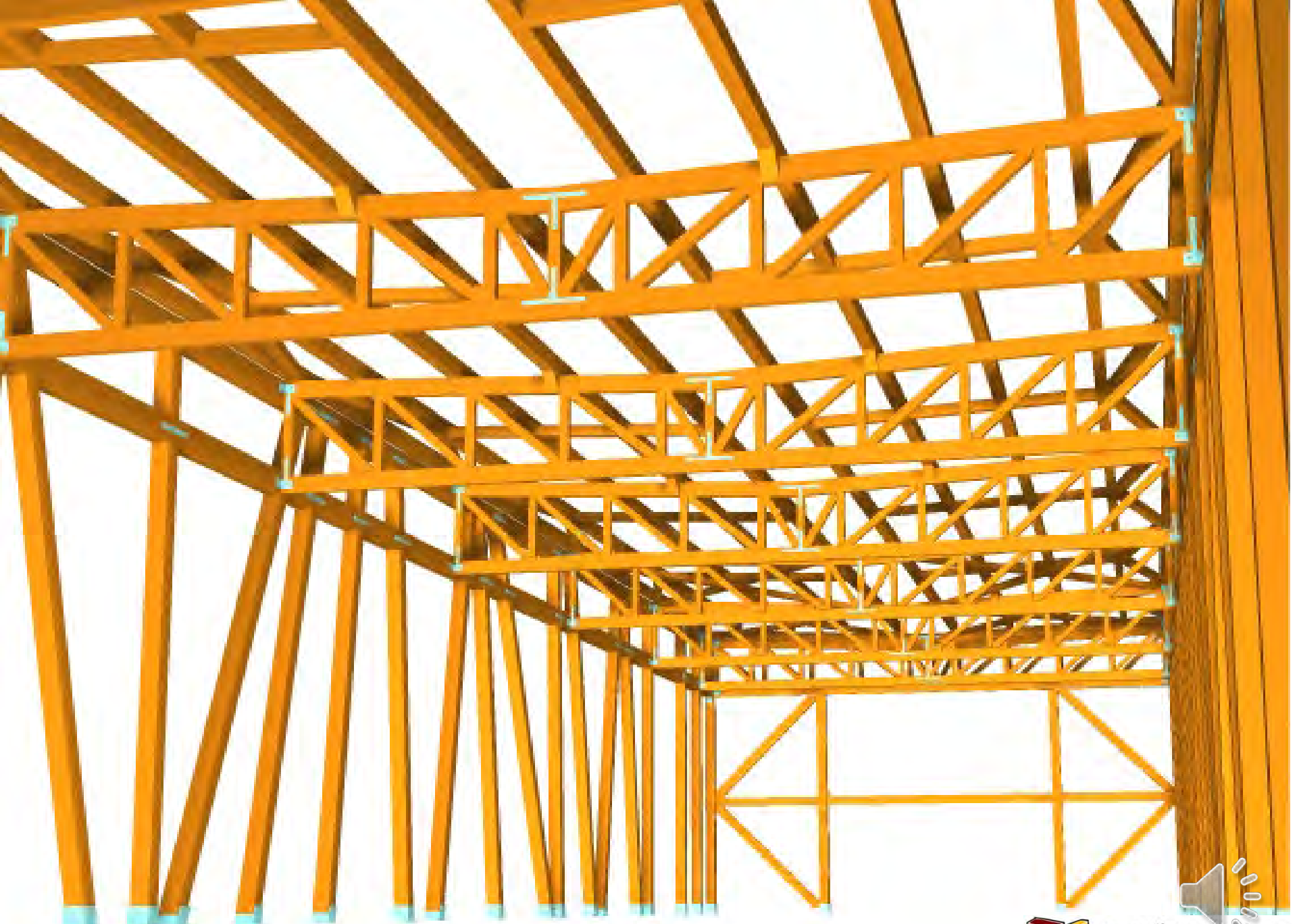


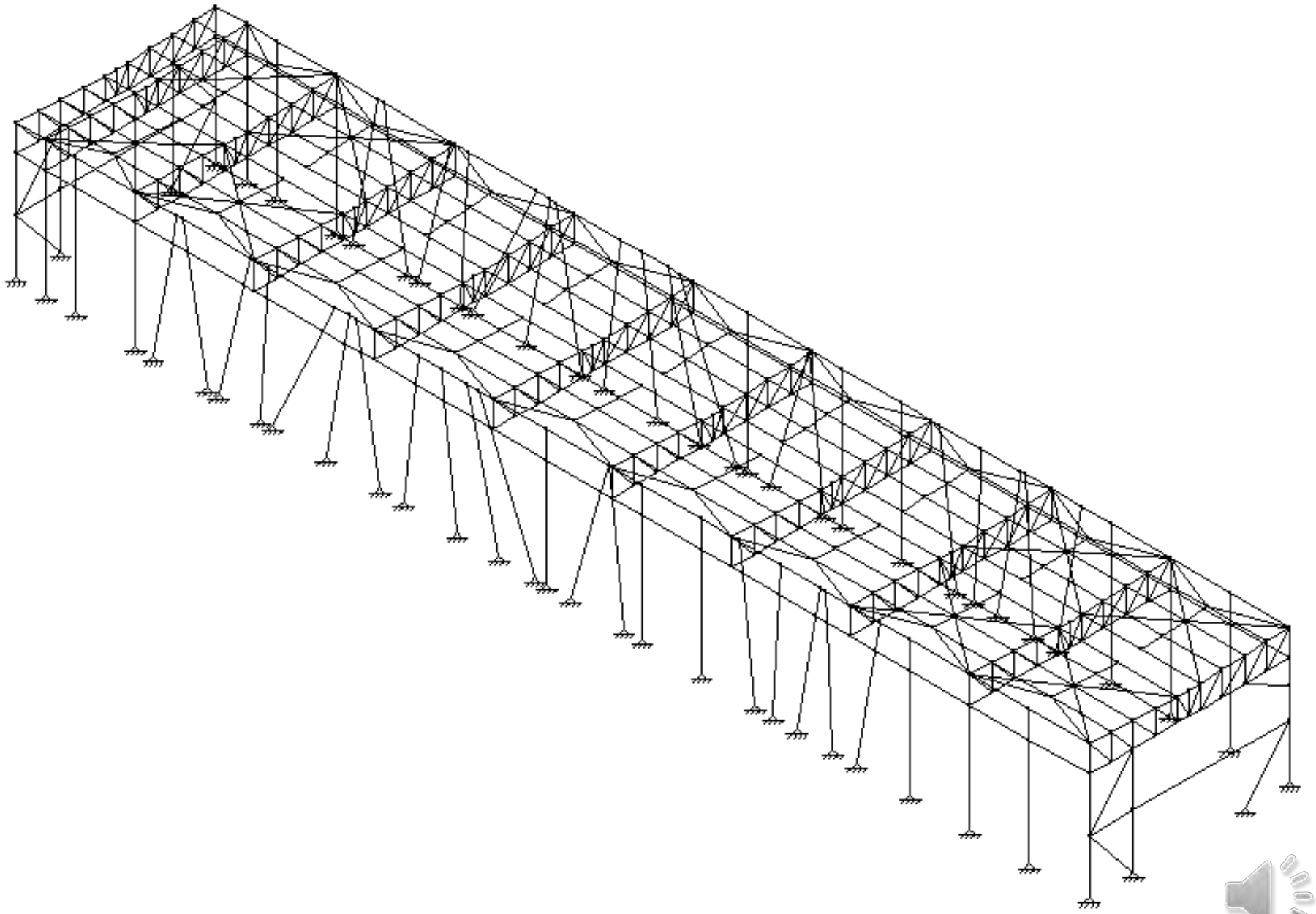


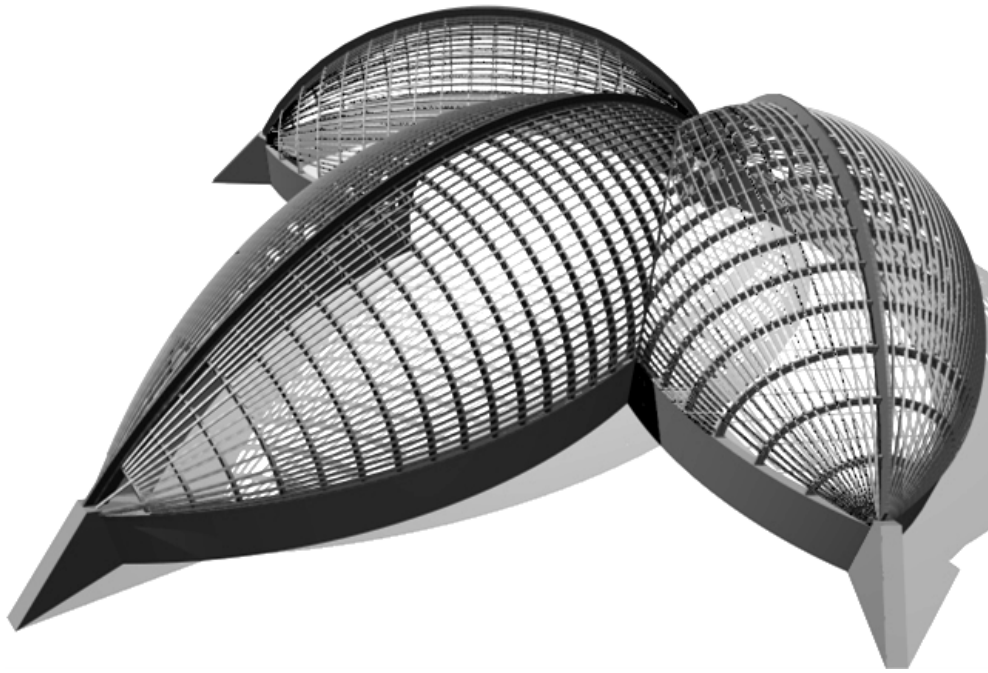
Estructura 3D Pabellón











Estructura 3D

museo





Arquitecto: Rufino García Uribelarrea



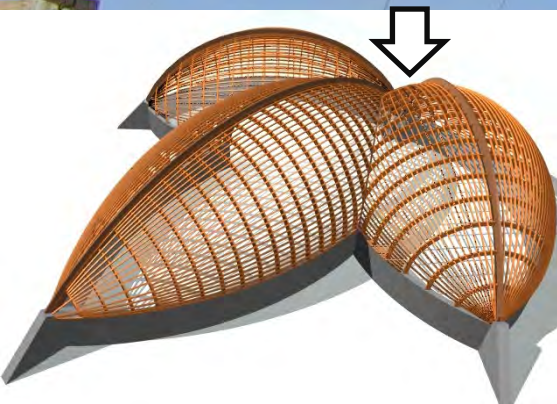
media madera
ingenieros consultores



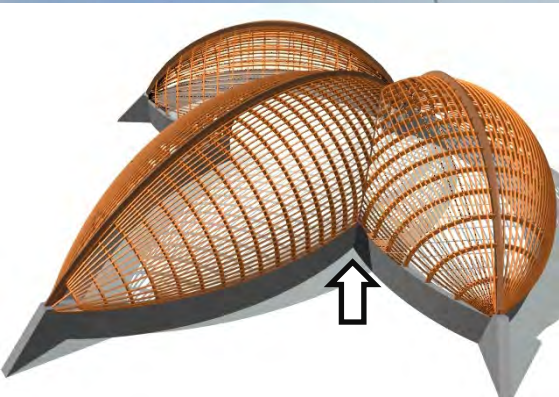
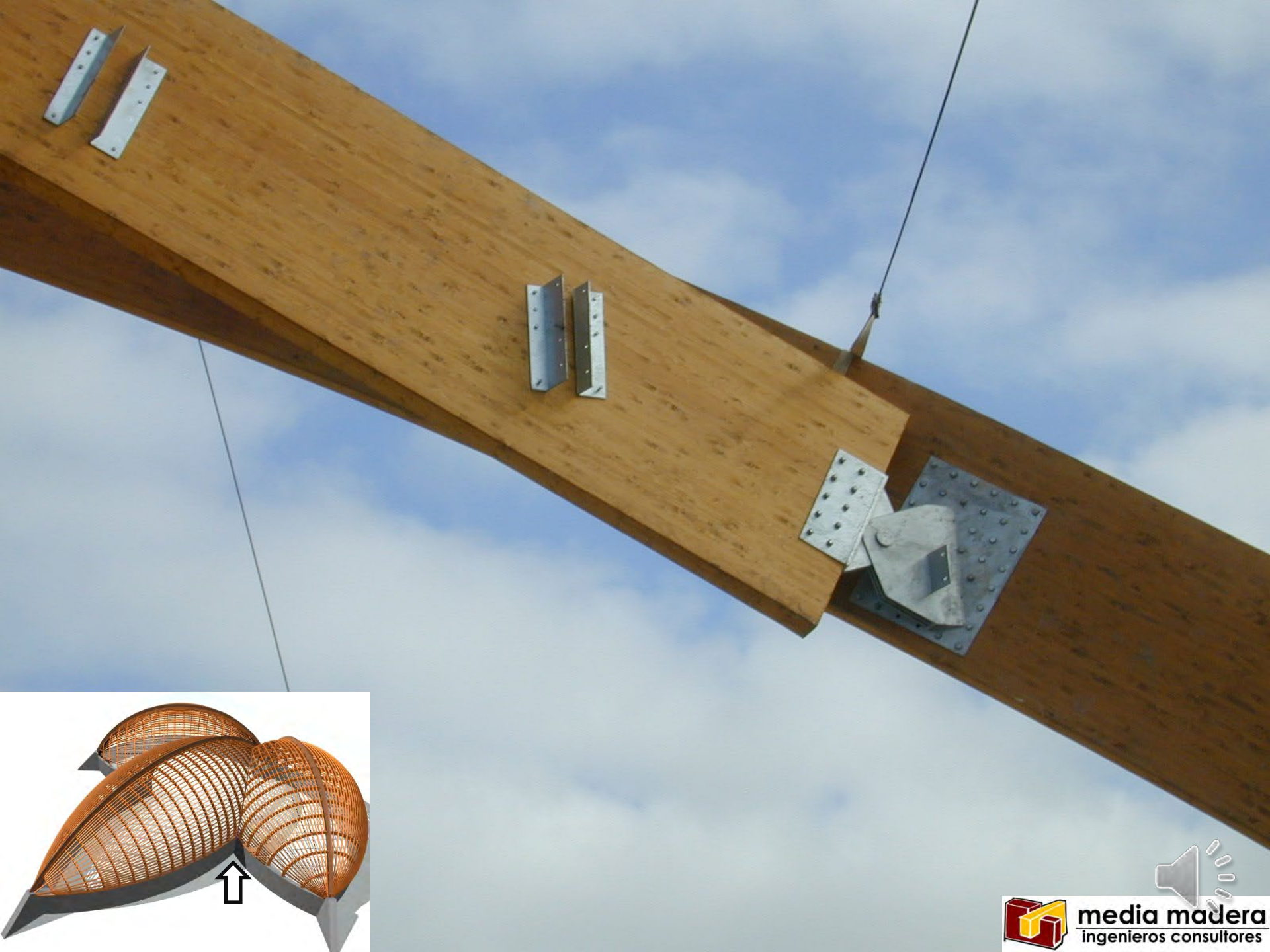












media mader
ingenieros consultores





















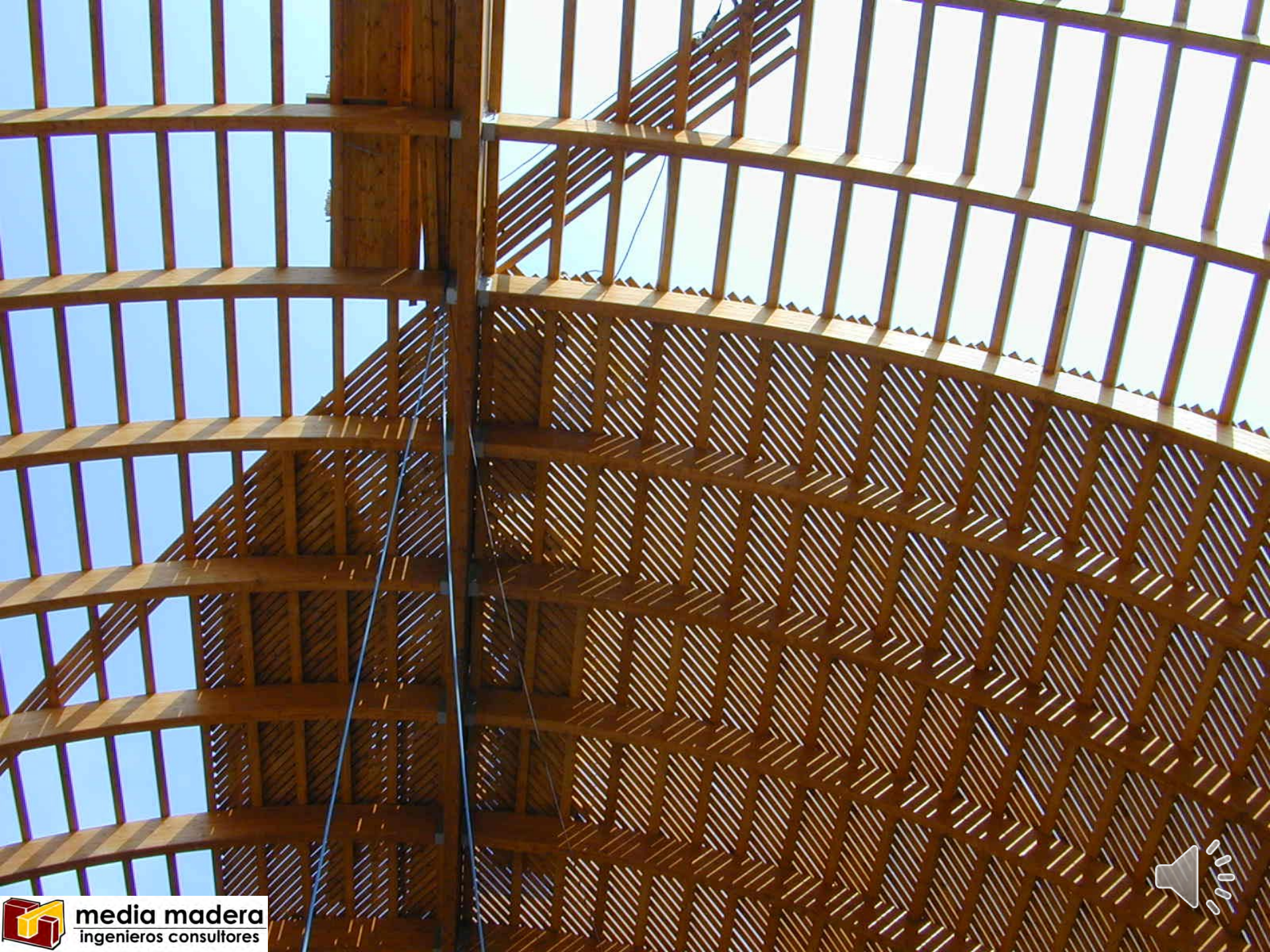






media madera
ingenieros consultores









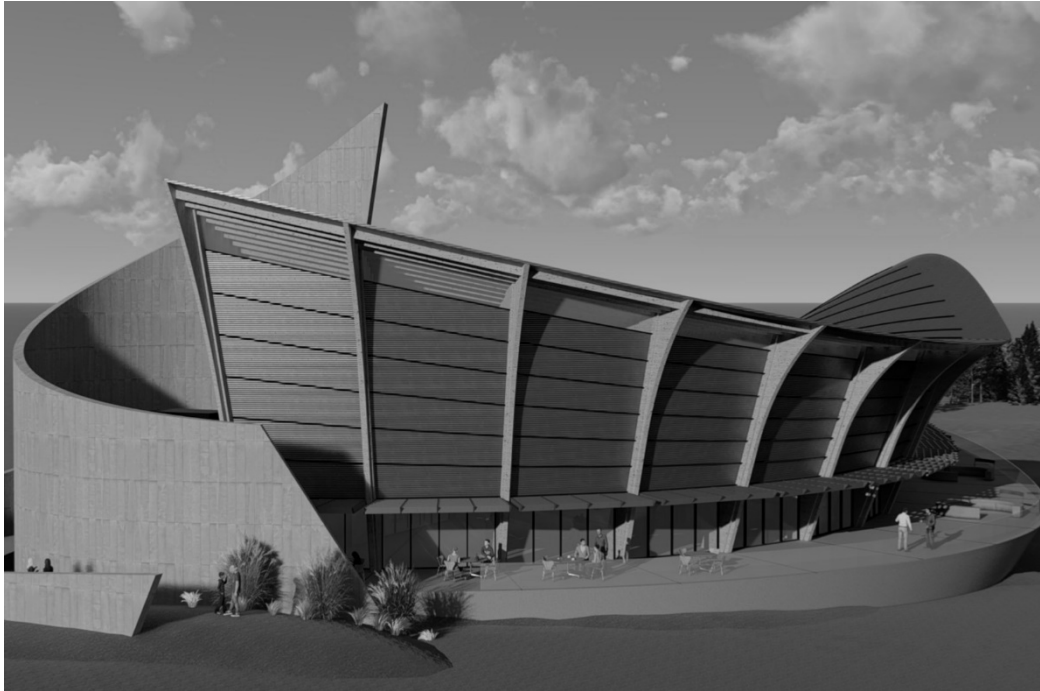
El Cretácico inferior europeo





Agradecimientos a la empresa Media Madera, Ingenieros Consultores, S.L. (www.mediamadera.com) por la cesión de su catálogo fotográfico para los cursos de la Facultad de Ingeniería de la Universidad de la República

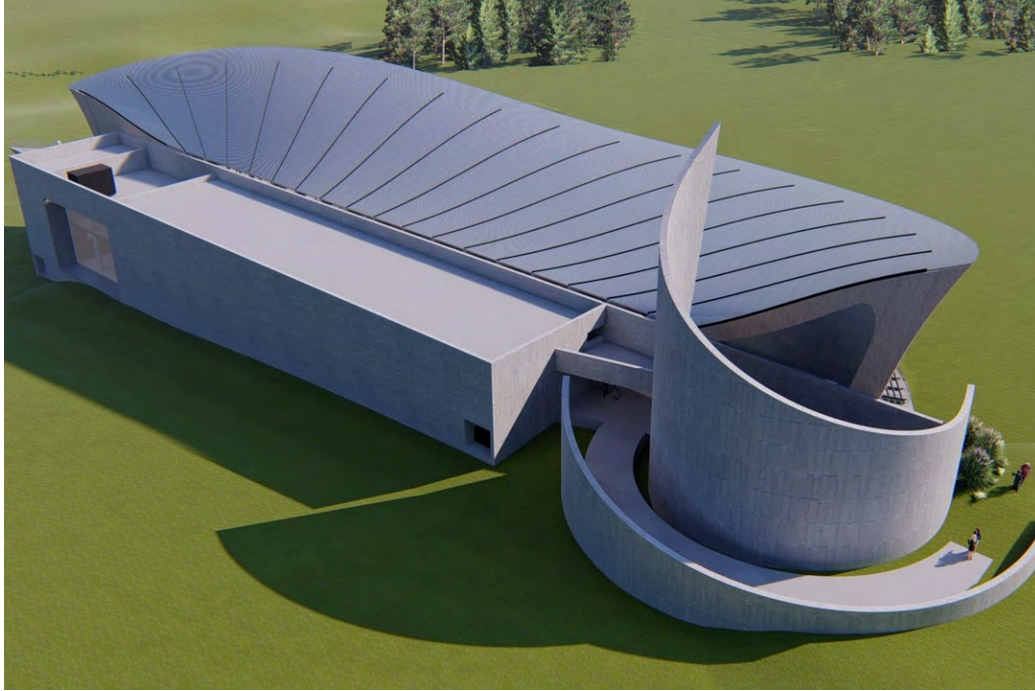




Estructura 3D

Museo de Arte Latinoamericano

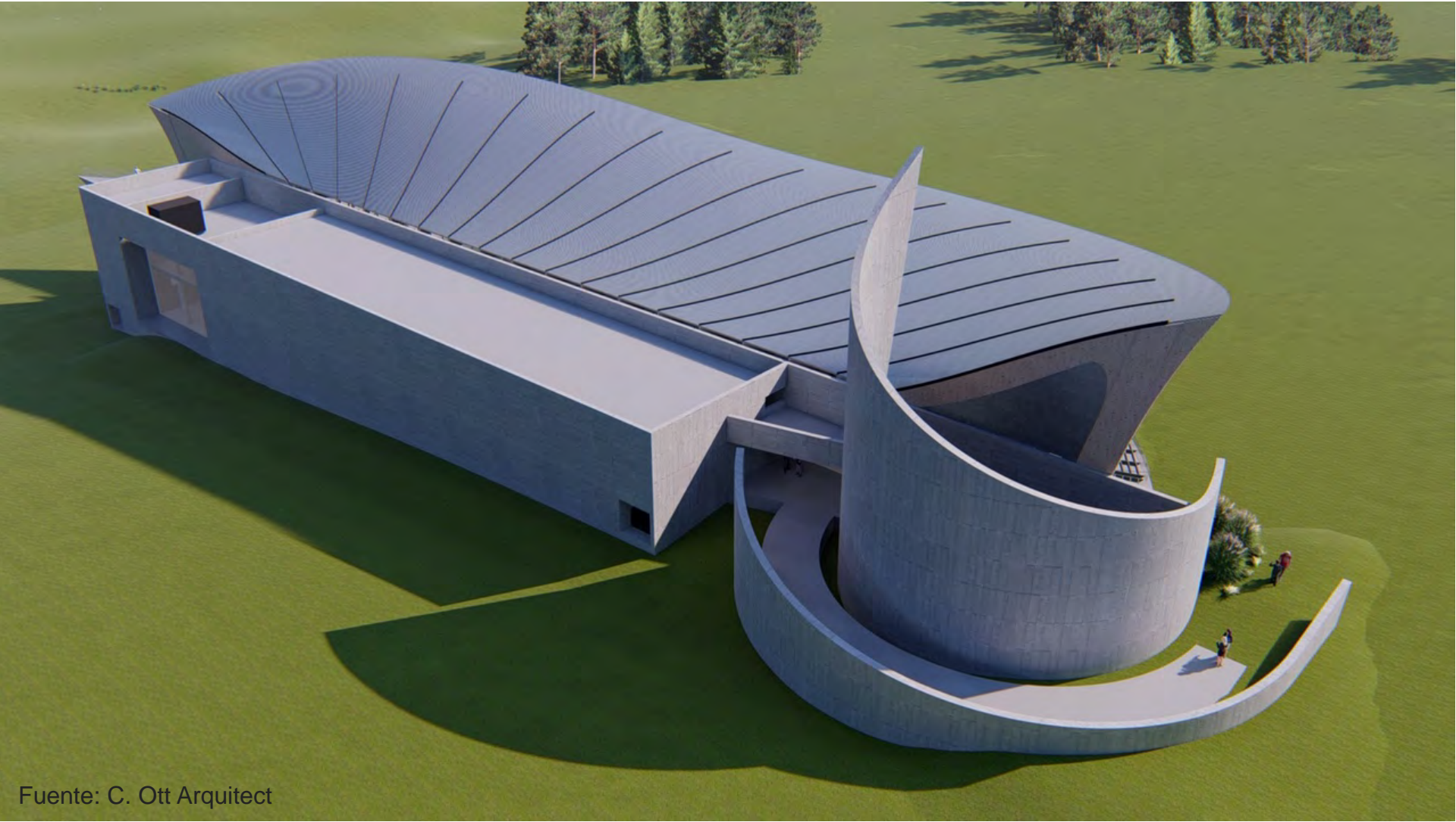




Diseño arquitectónico



Museo de Arte Latinoamericano



Fuente: C. Ott Architect



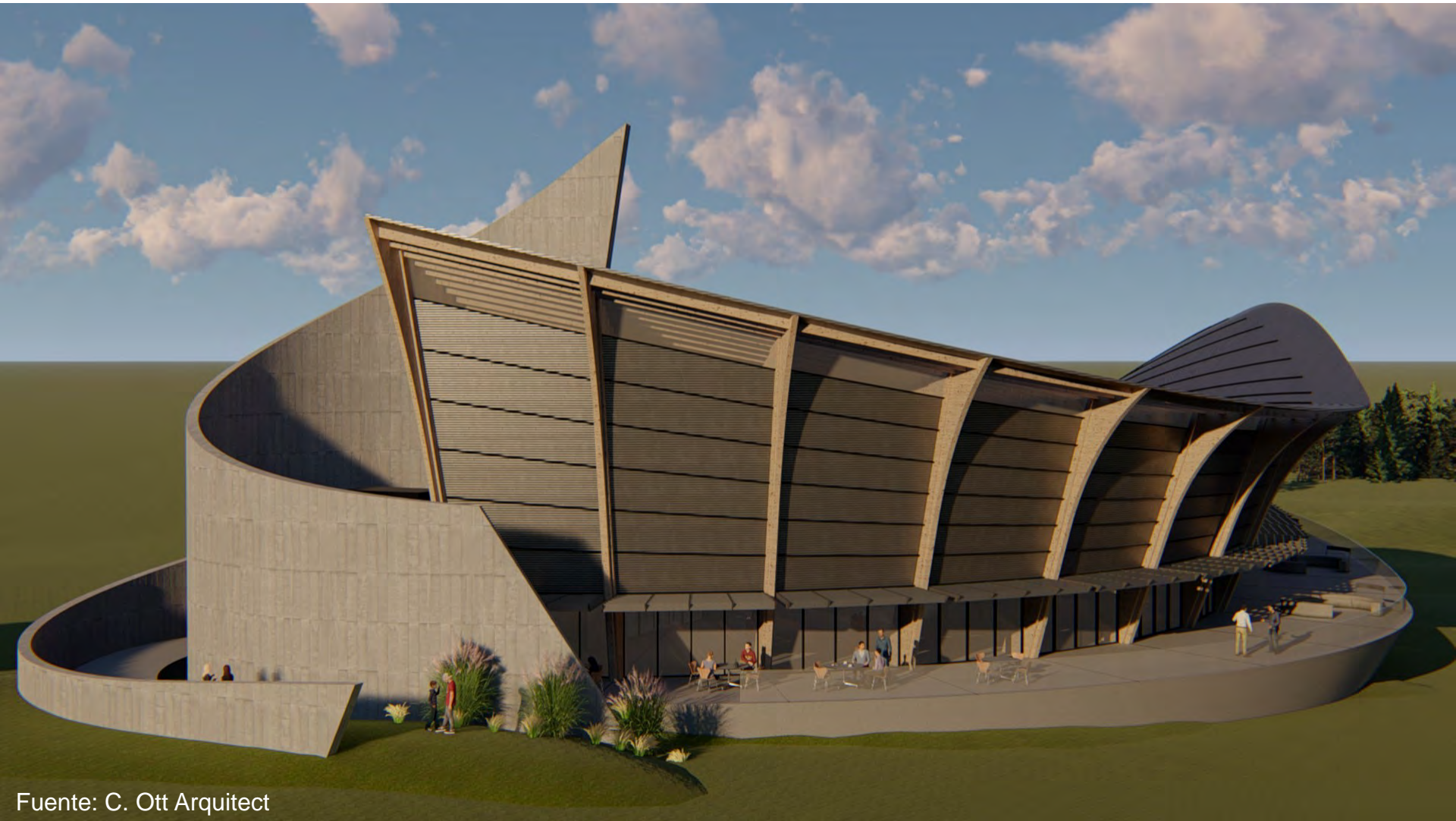
Museo de Arte Latinoamericano



Fuente: C. Ott Architect



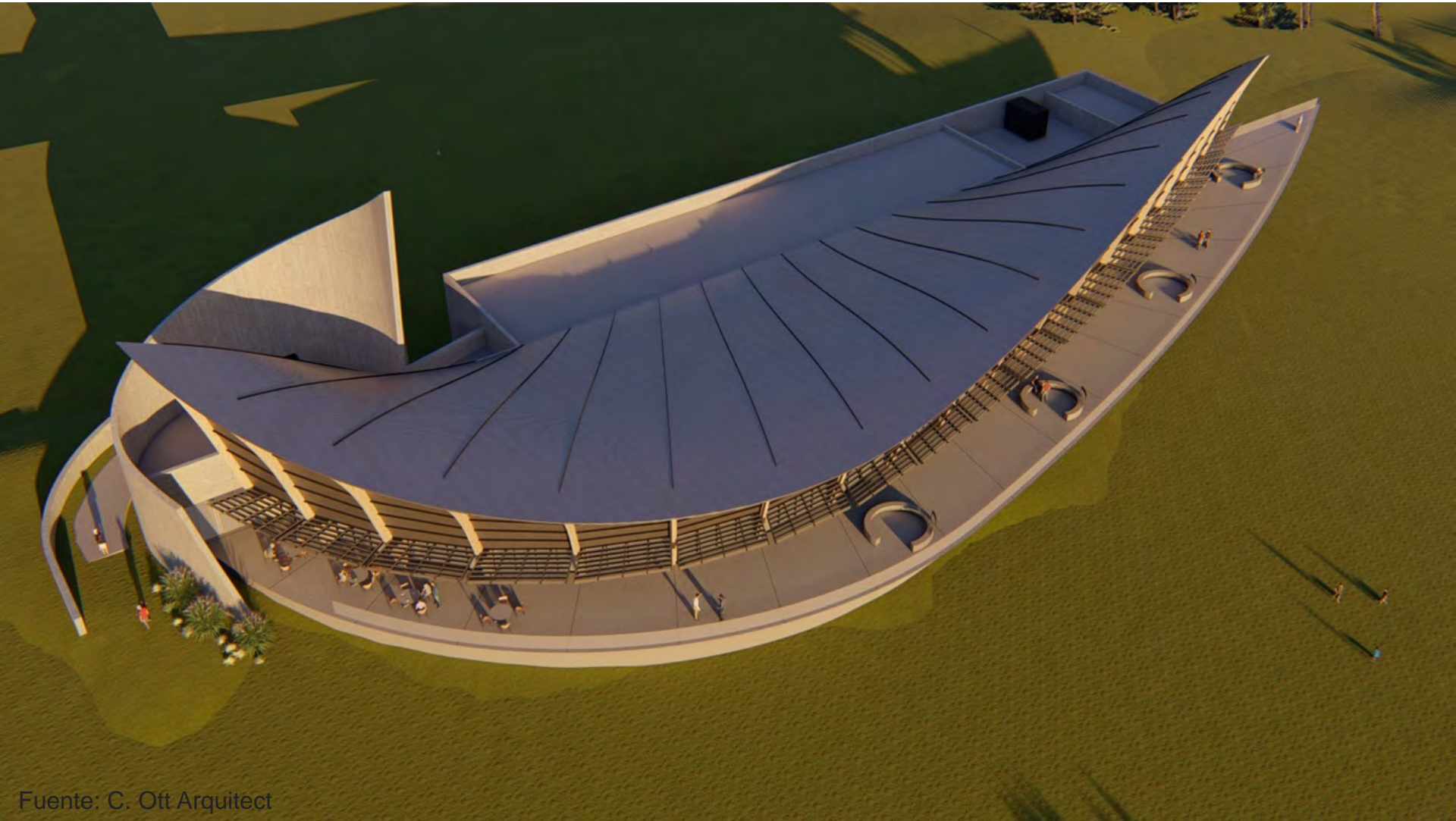
Museo de Arte Latinoamericano



Fuente: C. Ott Architect



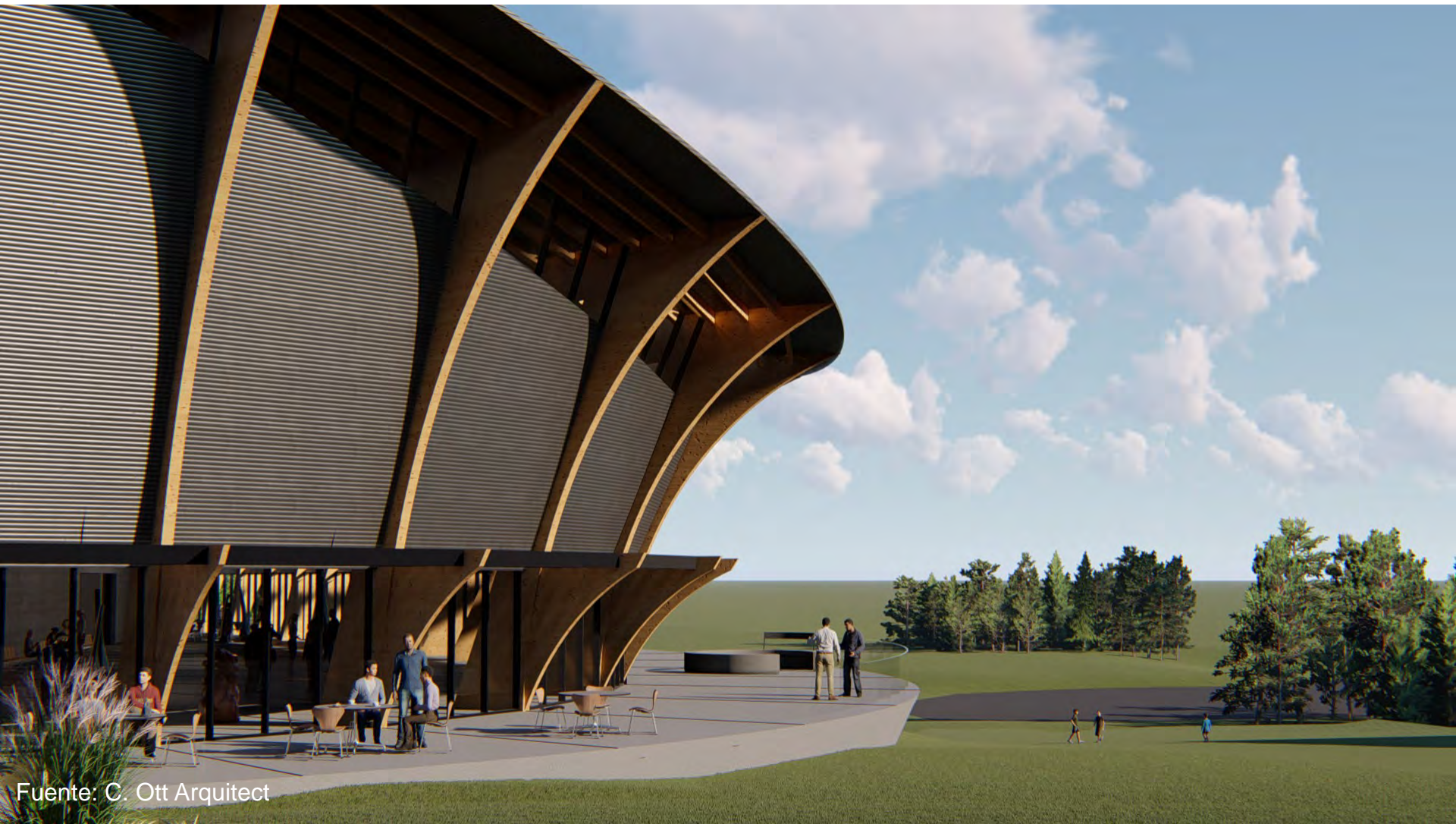
Museo de Arte Latinoamericano



Fuente: C. Ott Architect



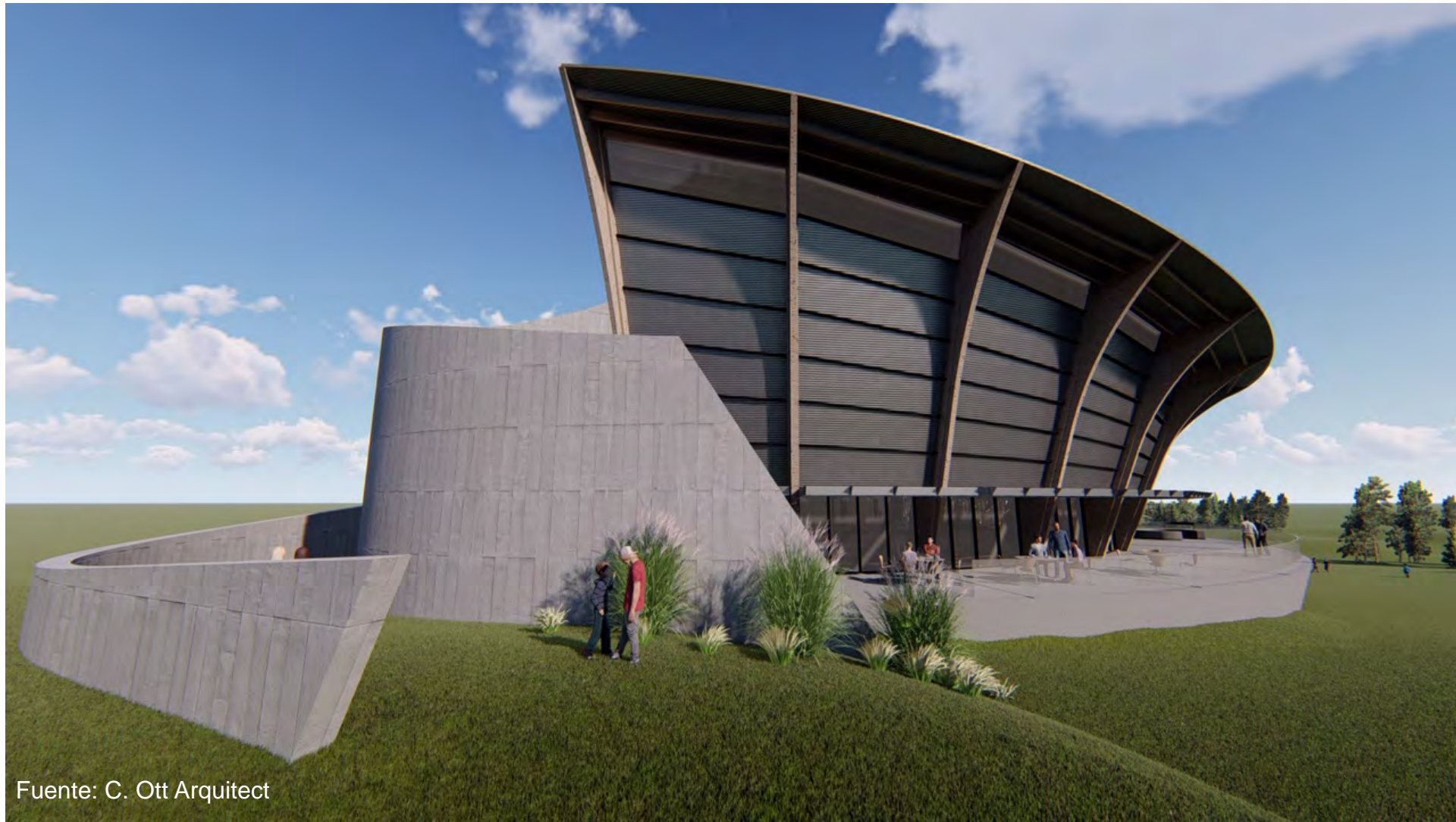
Museo de Arte Latinoamericano



Fuente: C. Ott Architect



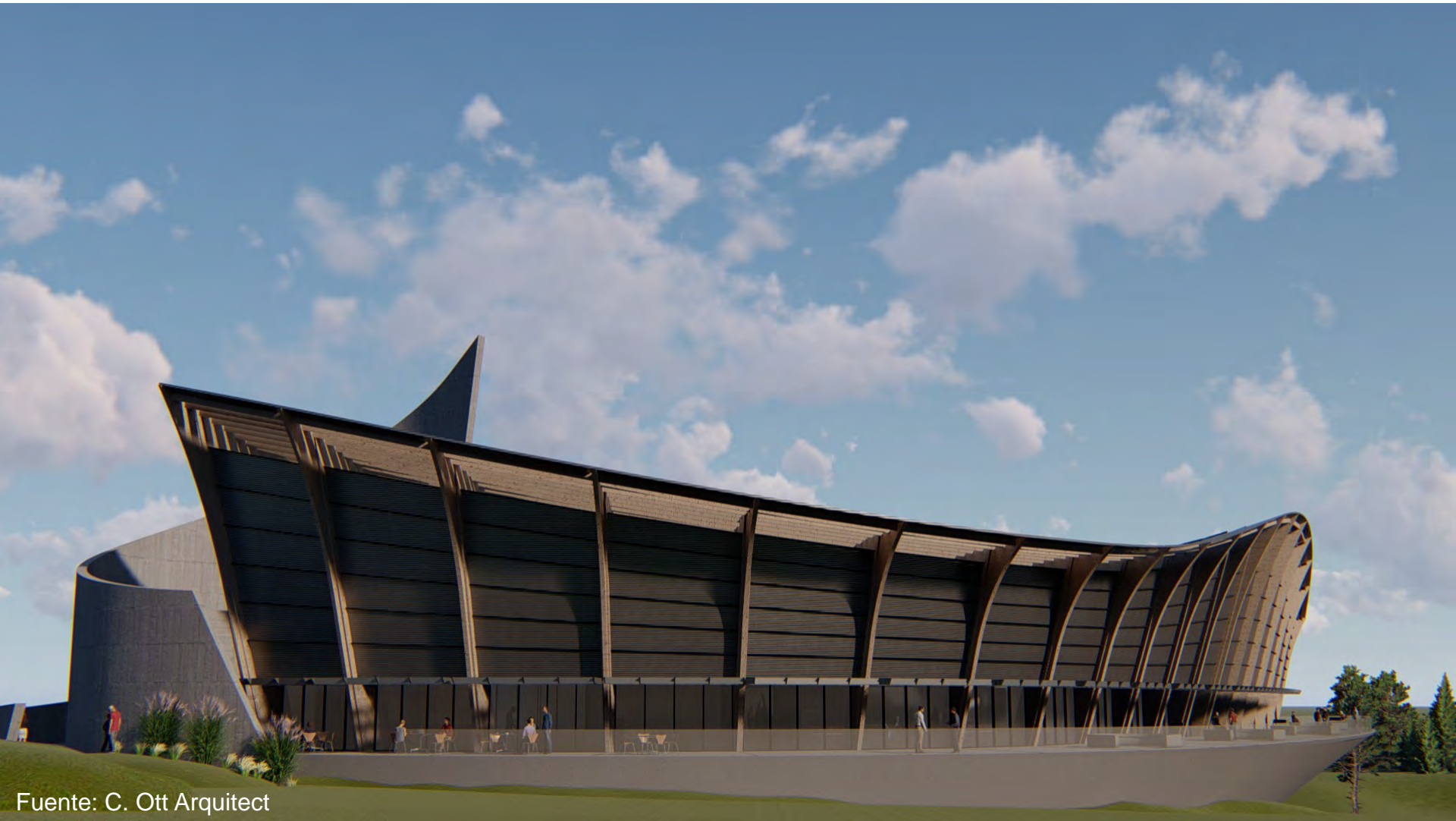
Museo de Arte Latinoamericano



Fuente: C. Ott Architect



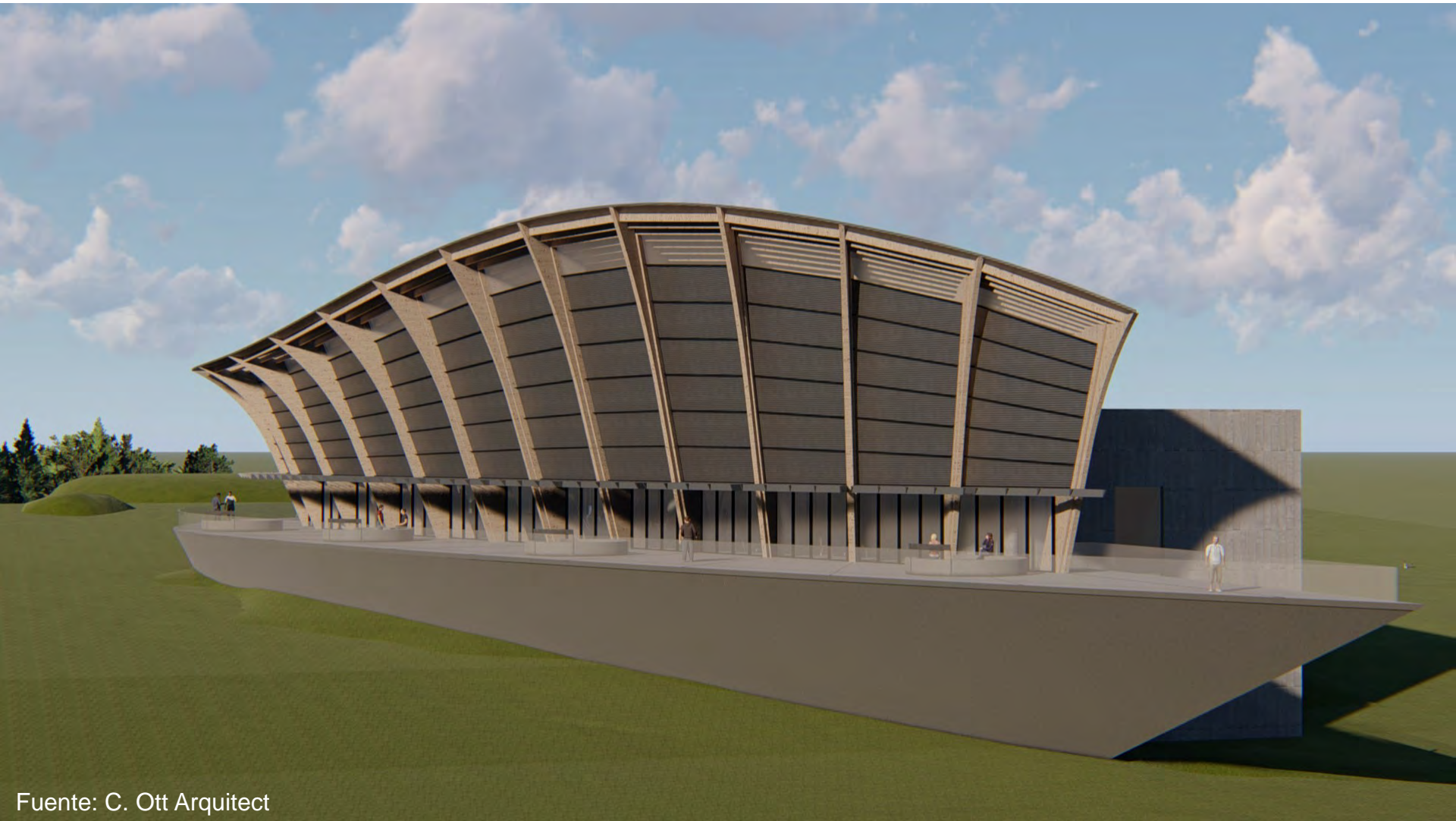
Museo de Arte Latinoamericano



Fuente: C. Ott Architect



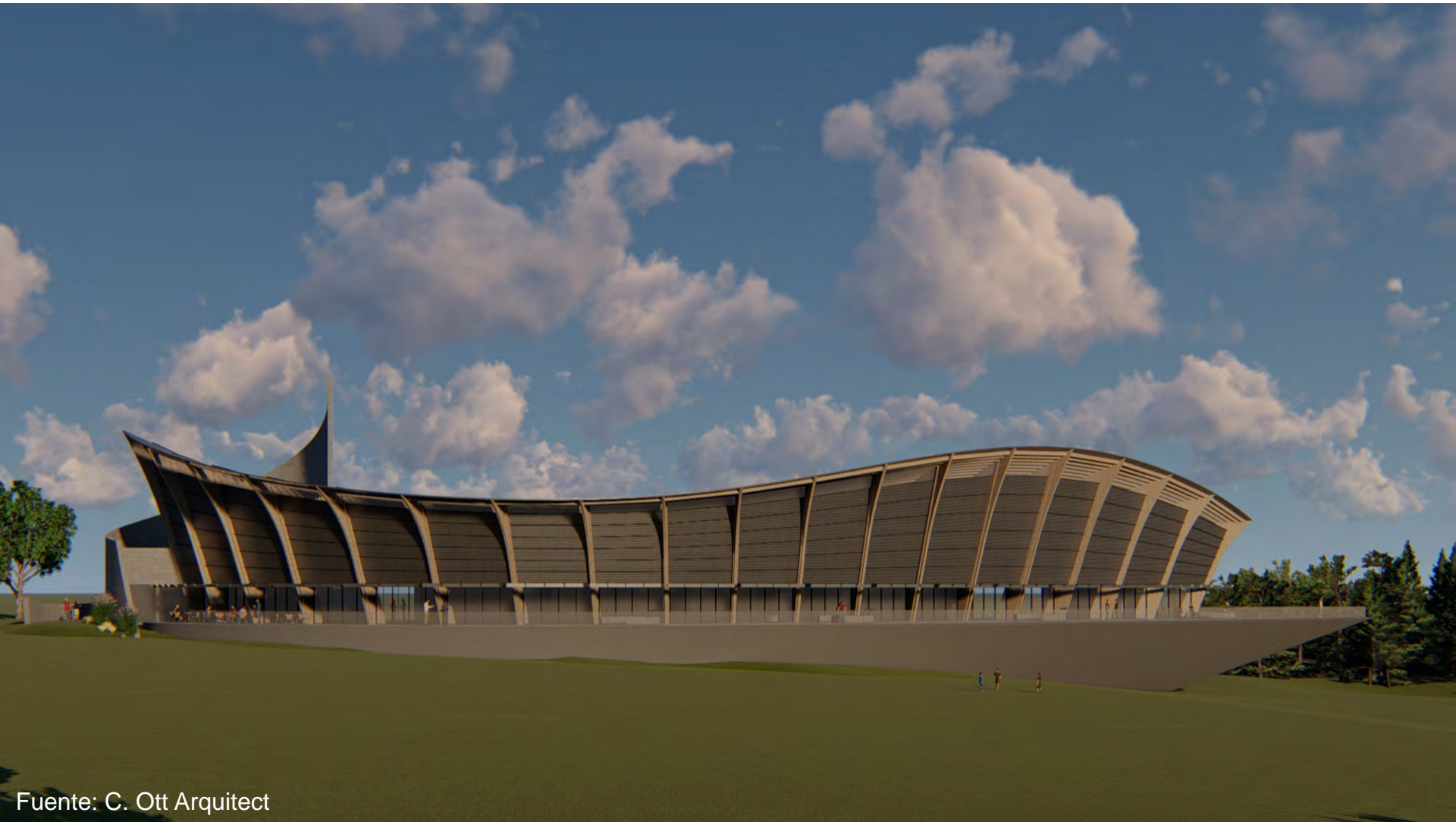
Museo de Arte Latinoamericano



Fuente: C. Ott Architect



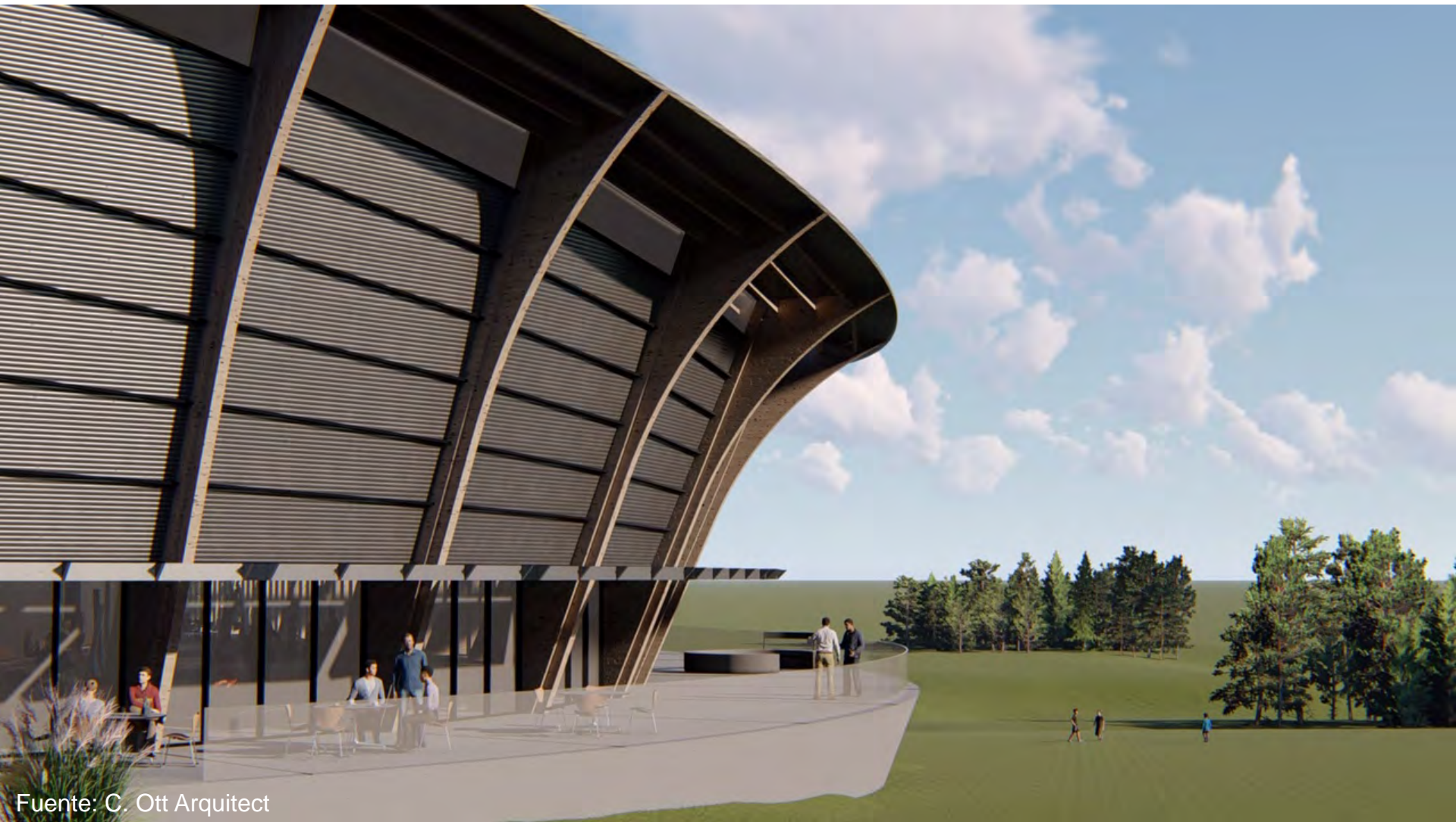
Museo de Arte Latinoamericano



Fuente: C. Ott Architect



Museo de Arte Latinoamericano



Fuente: C. Ott Architect



Museo de Arte Latinoamericano



Fuente: C. Ott Arquitect



Museo de Arte Latinoamericano



Fuente: C. Ott Architect



Museo de Arte Latinoamericano



Fuente: C. Ott Architect



Museo de Arte Latinoamericano



Fuente: C. Ott Architect



Museo de Arte Latinoamericano



Fuente: C. Ott Arquitect

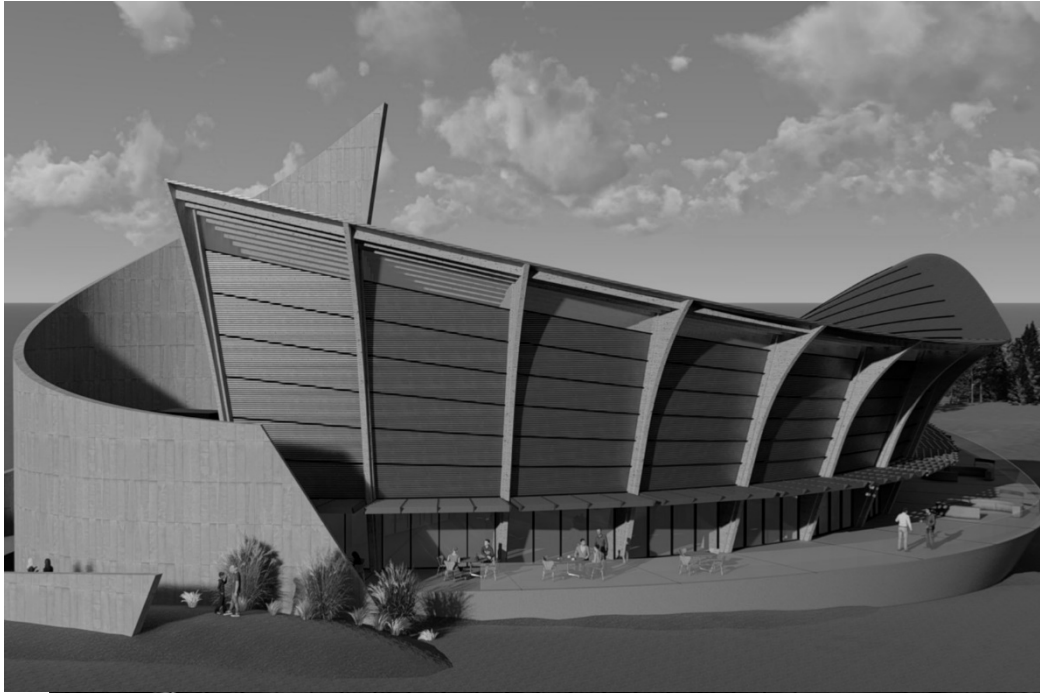


Museo de Arte Latinoamericano



Fuente: C. Ott Architect





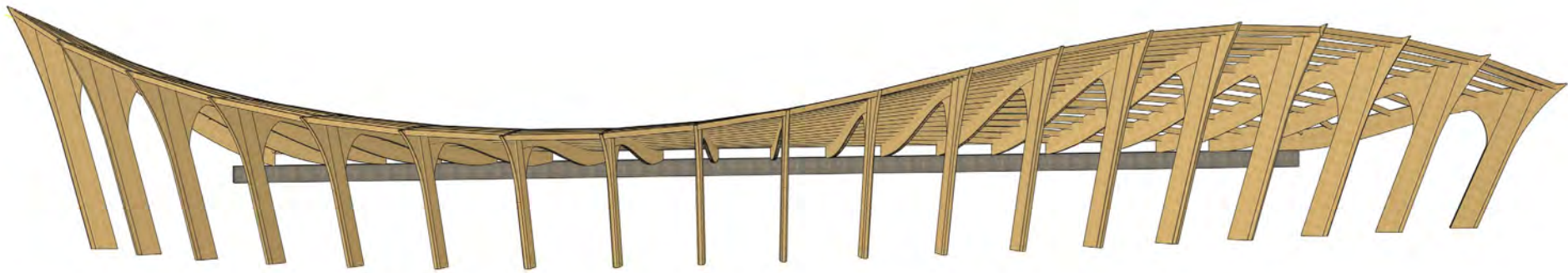
Diseño estructural



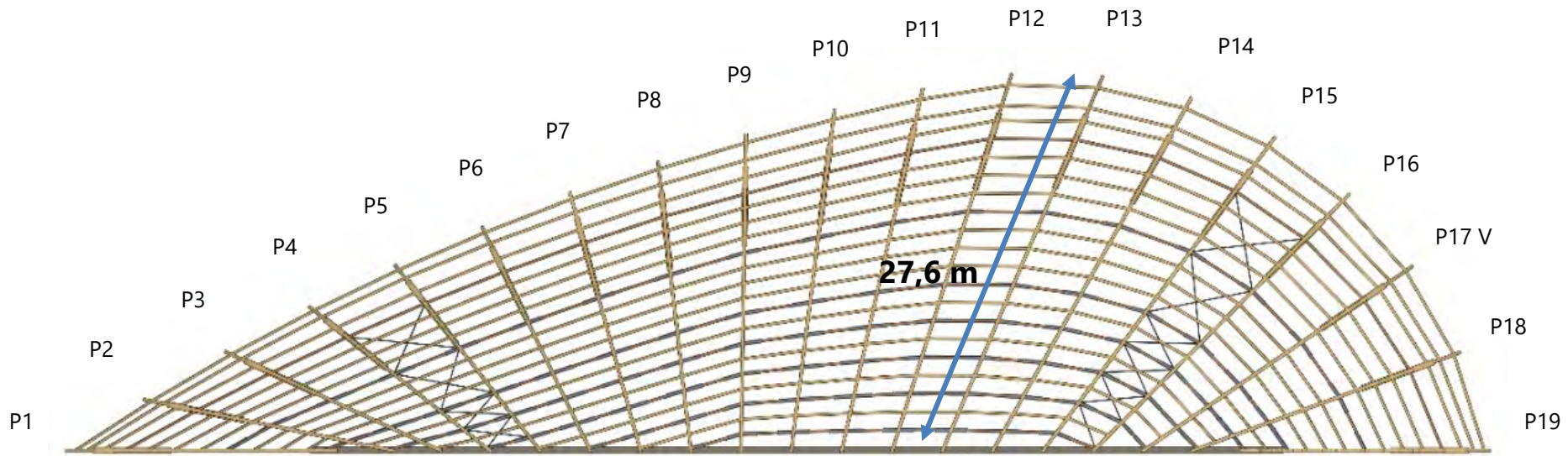
Museo de Arte Latinoamericano



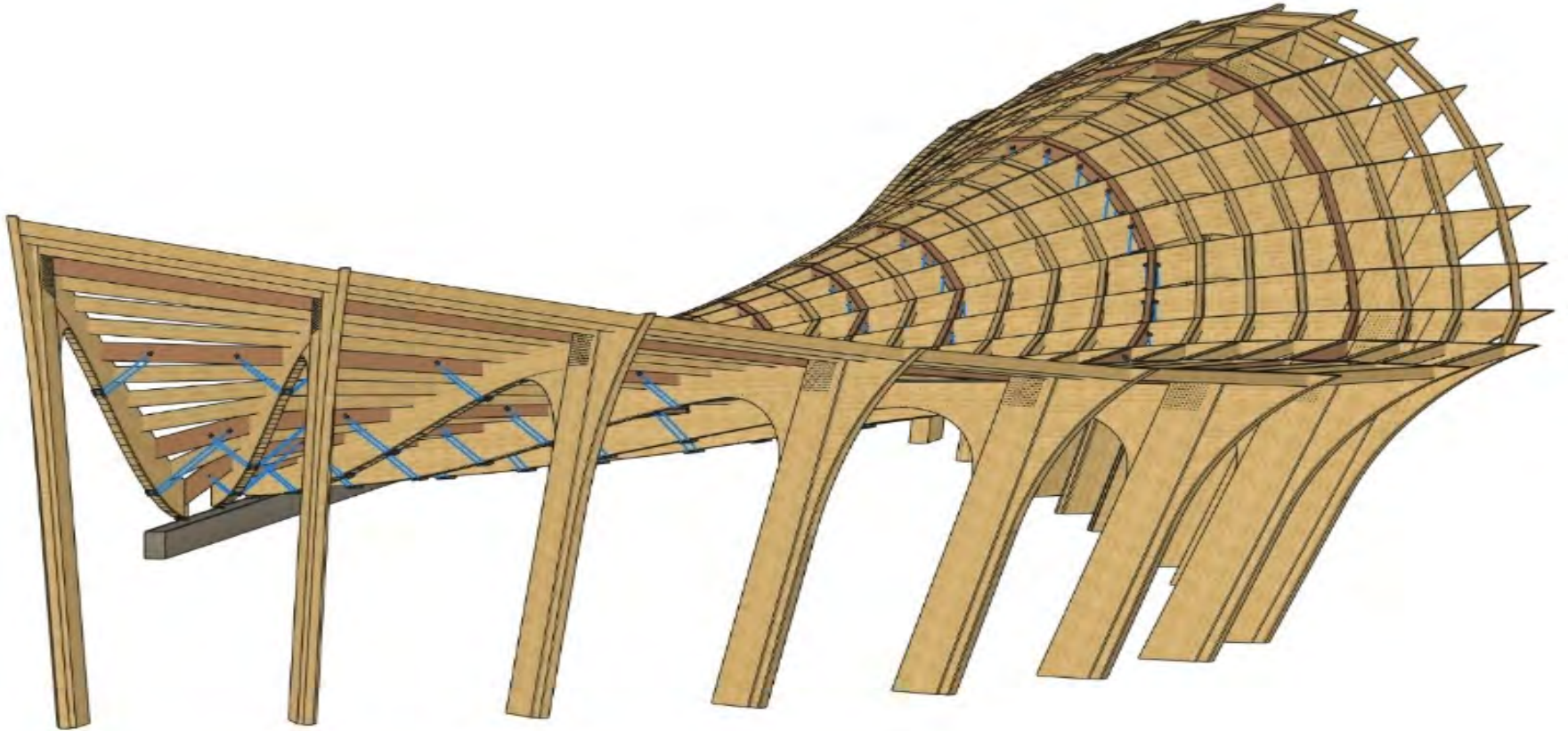
Museo de Arte Latinoamericano



Museo de Arte Latinoamericano



Museo de Arte Latinoamericano

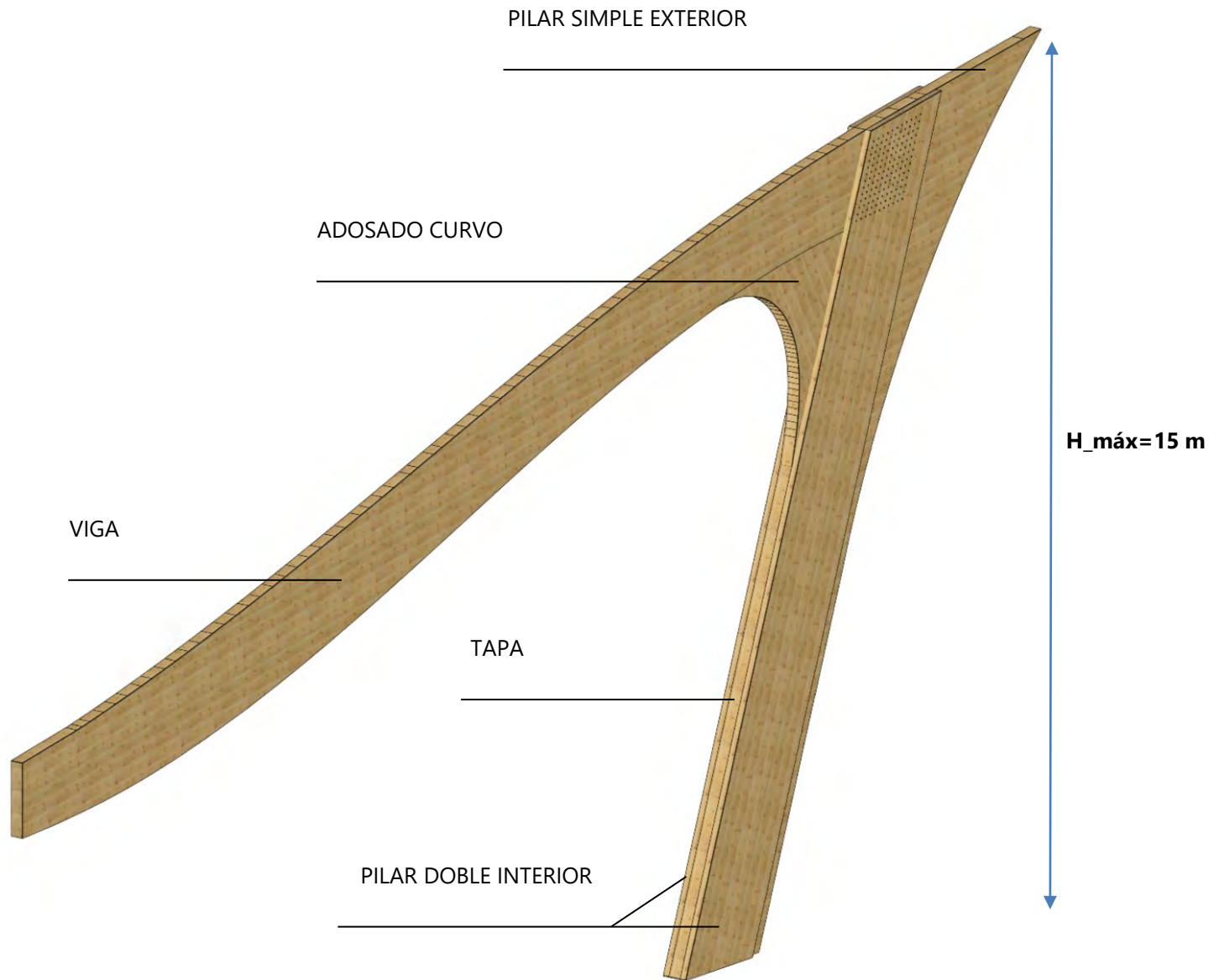


Fundación Pablo Atchugarry

CARLOS A. OTT Architect



Museo de Arte Latinoamericano



Museo de Arte Latinoamericano

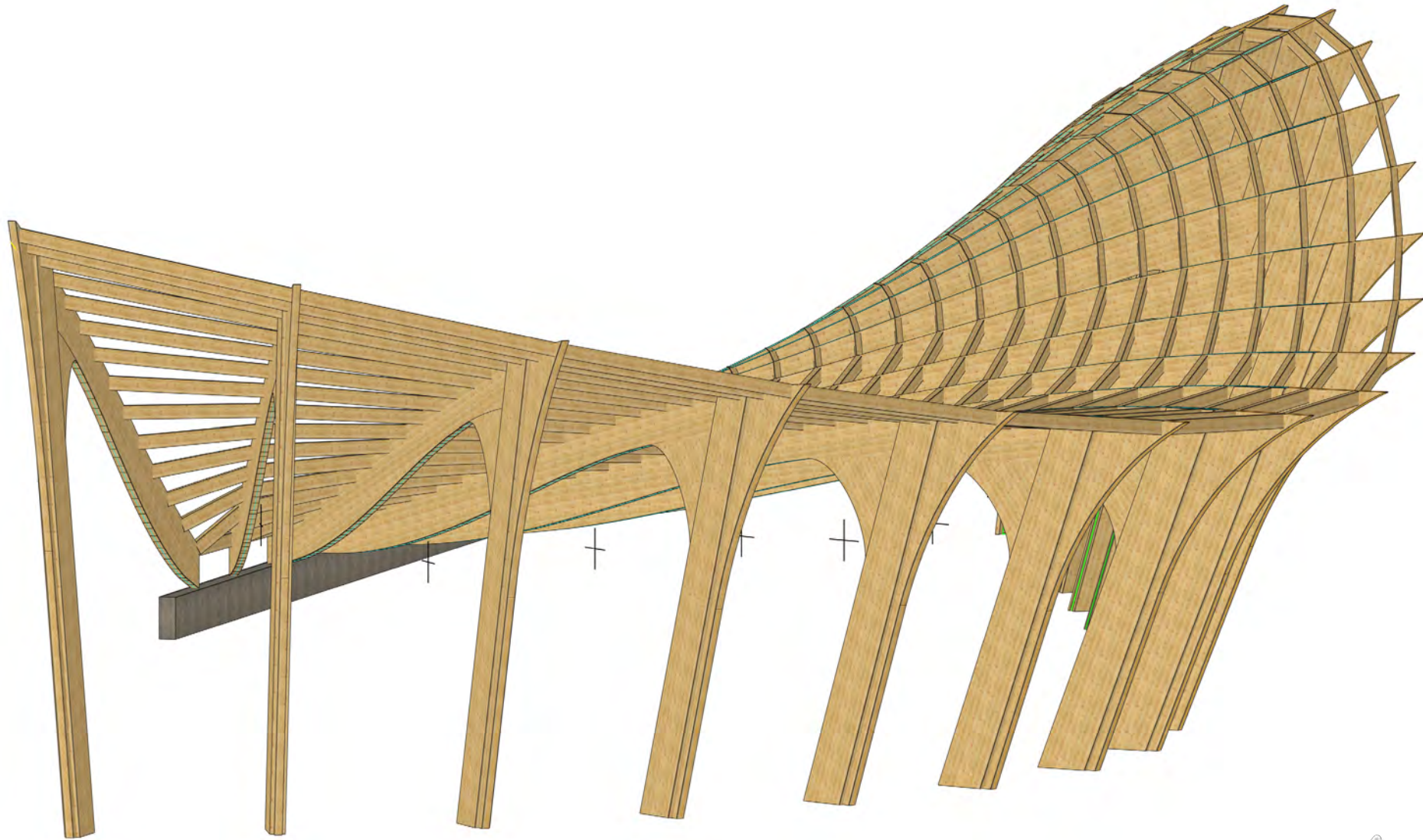


Fundación Pablo Atchugarry

CARLOS A. OTT Architect



Museo de Arte Latinoamericano

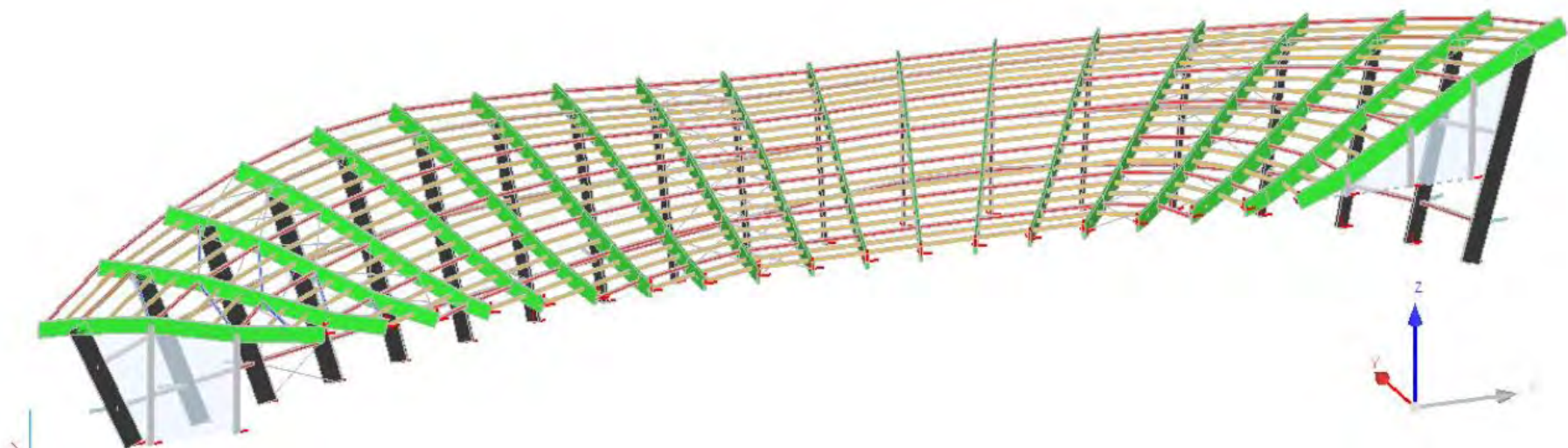


Museo de Arte Latinoamericano



Museo de Arte Latinoamericano







Fabricación MLE



Museo de Arte Latinoamericano



URUFOR
URUGUAY - SOUTH AMERICA



SIMONIN
Wood Solutions



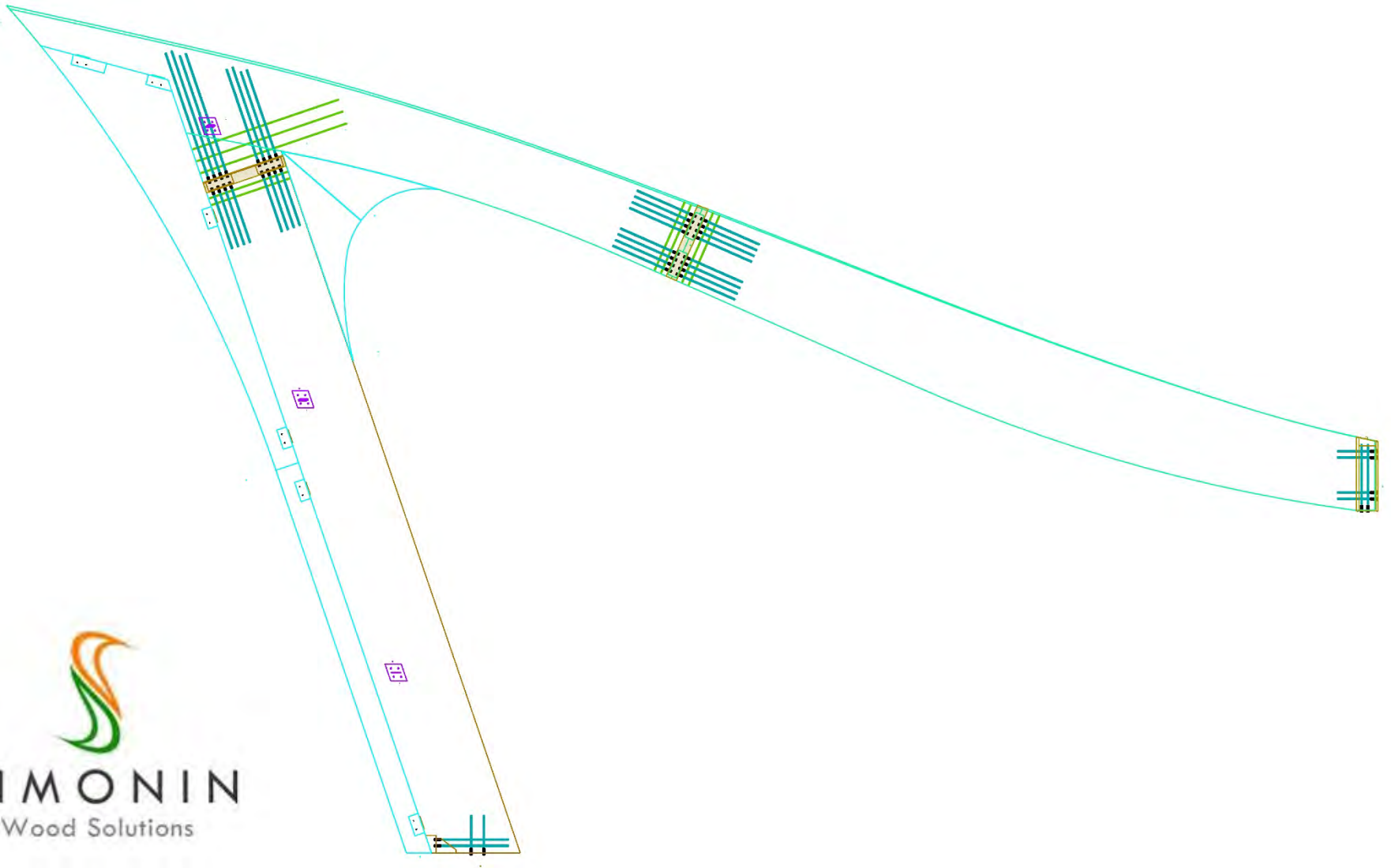
oak
INGENIERÍA



Museo de Arte Latinoamericano



Museo de Arte Latinoamericano



Museo de Arte Latinoamericano



Museo de Arte Latinoamericano





Construcción



Museo de Arte Latinoamericano



ATCHUGARRY

Arquitectura & Construcción

ELÉCTRICA E ILUMINACIÓN
ESTUDIO HOFSTADTER

ACONDICIONAMIENTO TÉRMICO
ING. LUIS LAGOMARSINO

ESTRUCTURA
ING. FEDERICO ATCHUGARRY
ING. GASTÓN GARESE

ESTRUCTURA DE MADERA
ING. VANESA BAÑO
ING. CARLOS MAZZEY
ING. LEANDRO DOMENECH

CARLOS OTT
ARCHITECT



Museo de Arte Latinoamericano



Museo de Arte Latinoamericano



Museo de Arte Latinoamericano



Museo de Arte Latinoamericano



Museo de Arte Latinoamericano





GRACIAS POR LA
ATENCIÓN

FACULTAD DE
INGENIERIA

