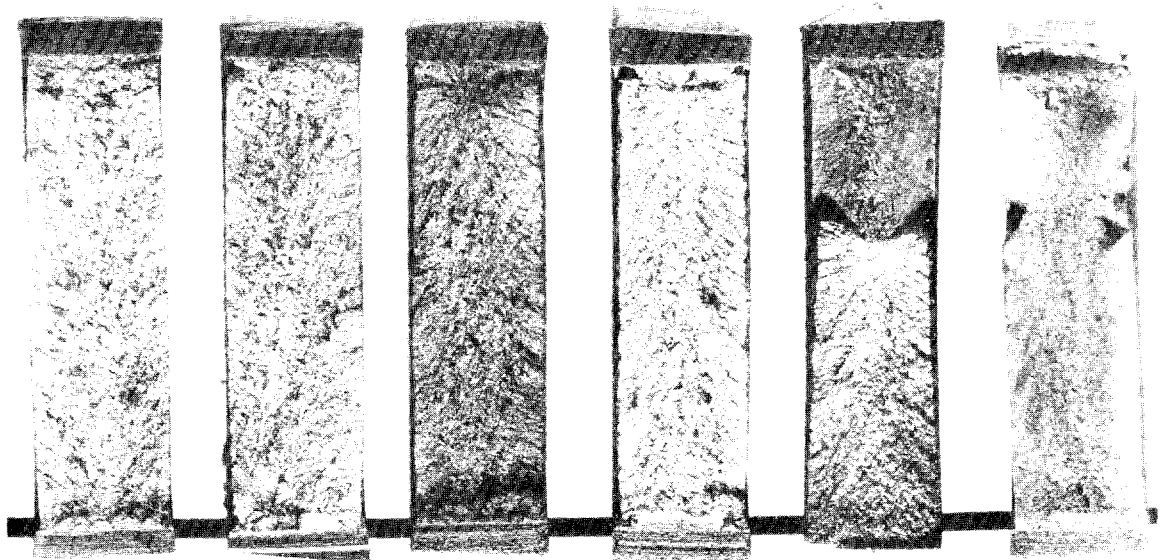


TEMPERATURE, °F	39°	73°	89°	100°
% SHEAR	4%	4%	96%	10%

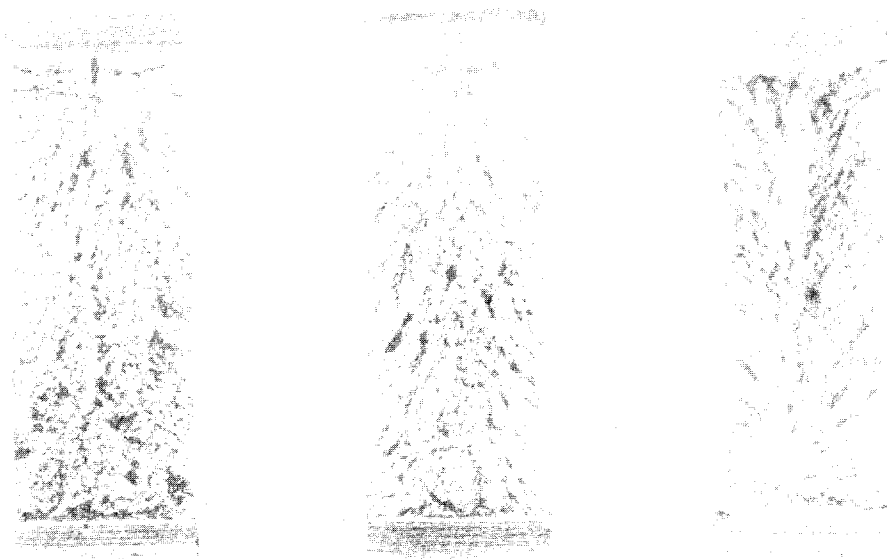
$\frac{5}{8}$ -INCH THICK



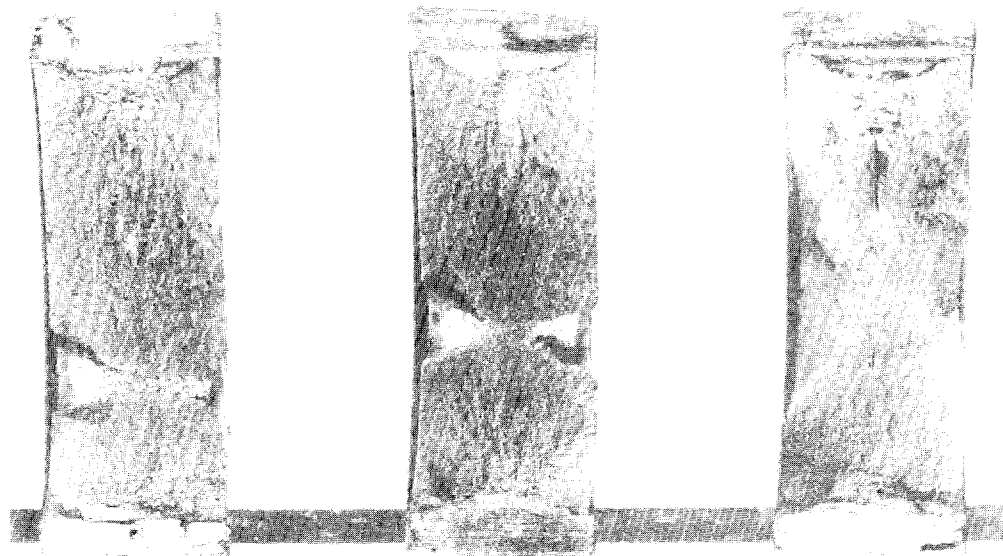
TEMPERATURE, °F	34°	49°	75°	87°	96°	106°
% SHEAR	2%	3%	4%	6%	36%	98%

$\frac{3}{4}$ -INCH THICK

FIG. 64 EDGE NOTCHED SPECIMENS, 3-INCH WIDE, $\frac{3}{4}$ -INCH THICK AND $\frac{5}{8}$ -INCH THICK, SHOWING EFFECT OF TEMPERATURE ON TYPE OF FRACTURE

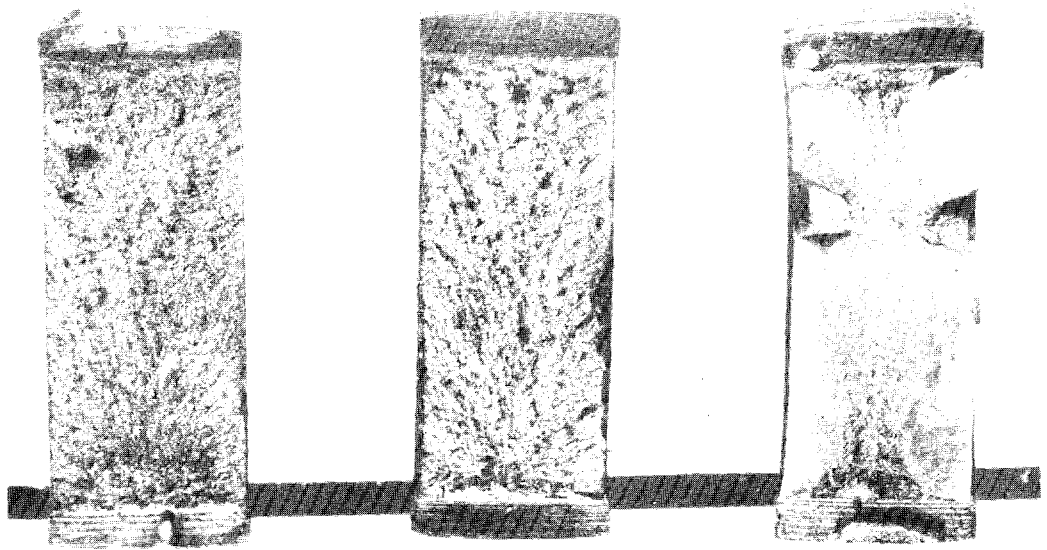


TEMPERATURE, °F	41°	100°	137°
% SHEAR	2%	2%	18%

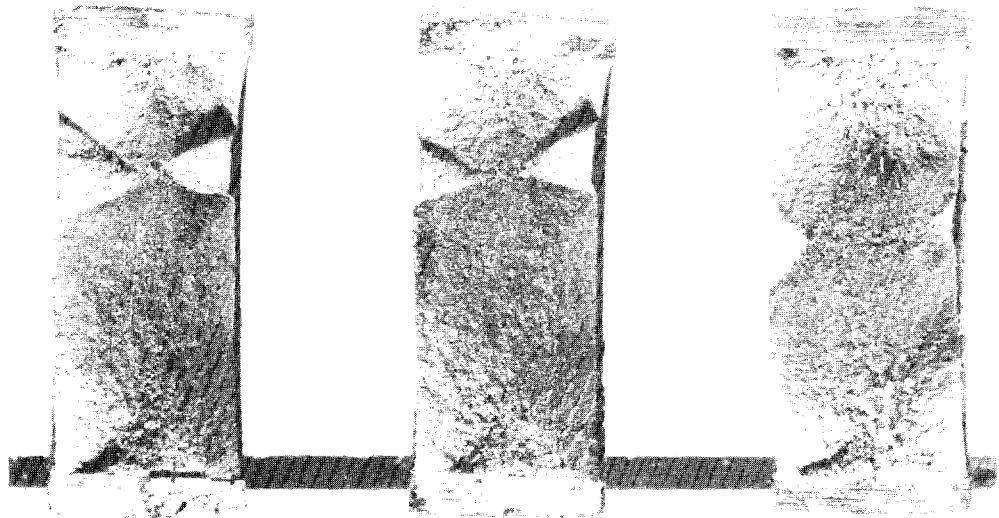


TEMPERATURE, °F	144°	147°	161°
% SHEAR	97%	97%	100%

FIG. 65 EDGE NOTCHED SPECIMENS, 3-INCH WIDE, 1-INCH THICK
 SHOWING EFFECT OF TEMPERATURE ON TYPE OF
 FRACTURE



TEMPERATURE, °F	77°	118°	134°
% SHEAR	0%	4%	96%



TEMPERATURE, °F	139°	152°	162°
% SHEAR	94%	97%	100%

FIG. 66 EDGE NOTCHED SPECIMENS, 3-INCH WIDE, $1\frac{1}{8}$ -INCH THICK SHOWING EFFECT OF TEMPERATURE ON TYPE OF FRACTURE