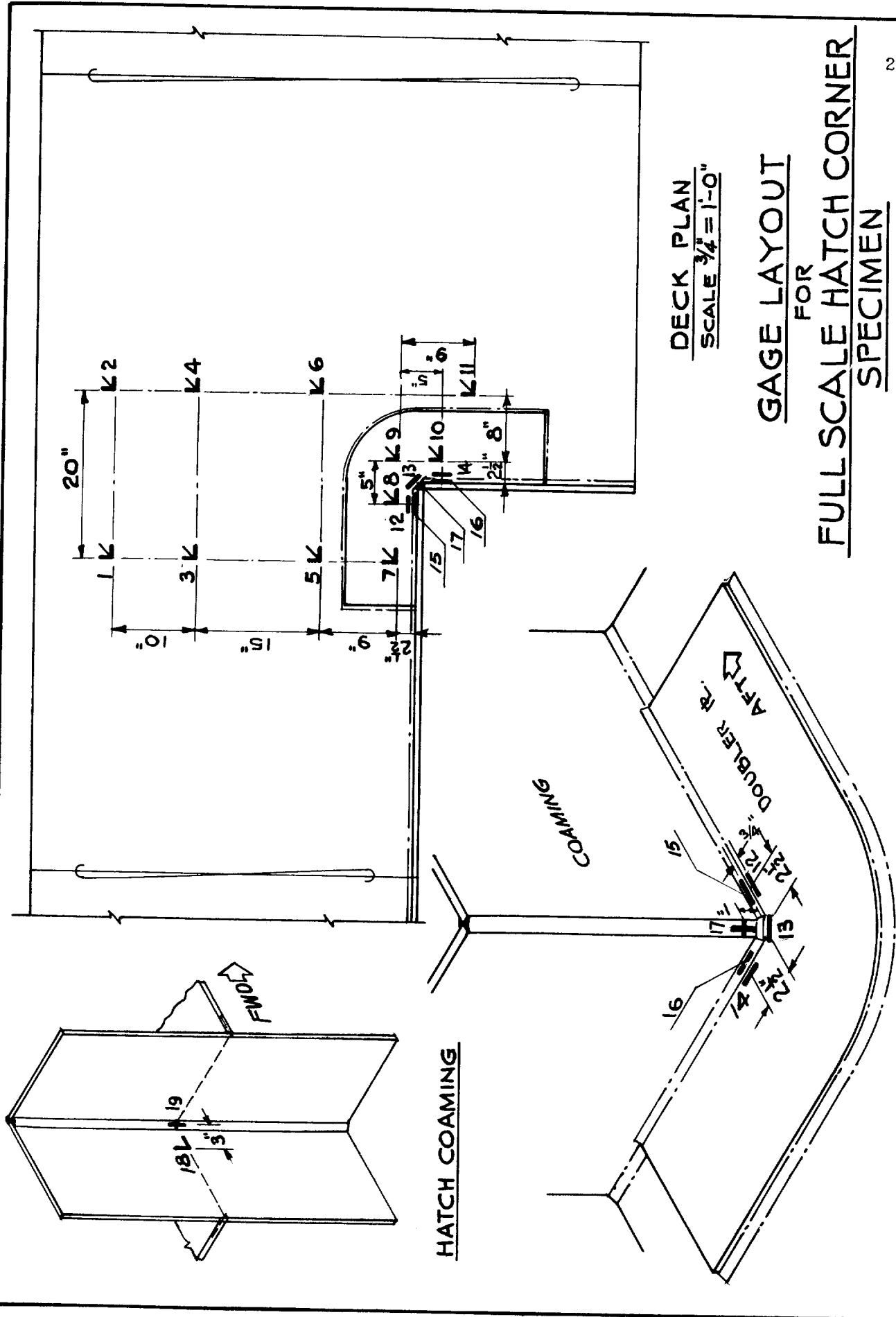


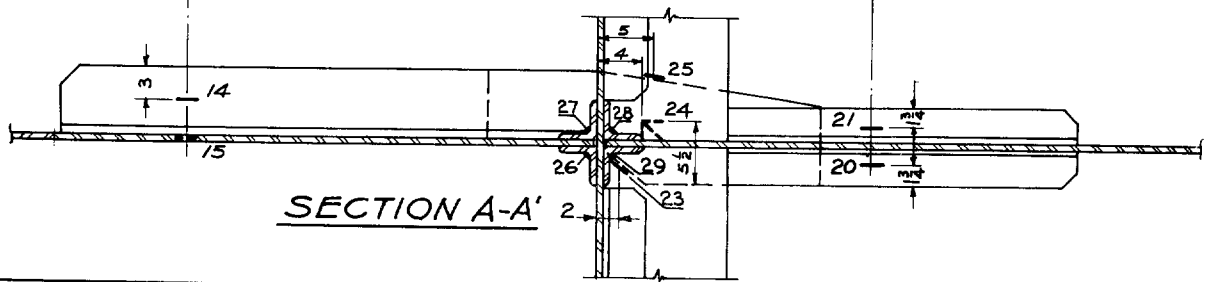
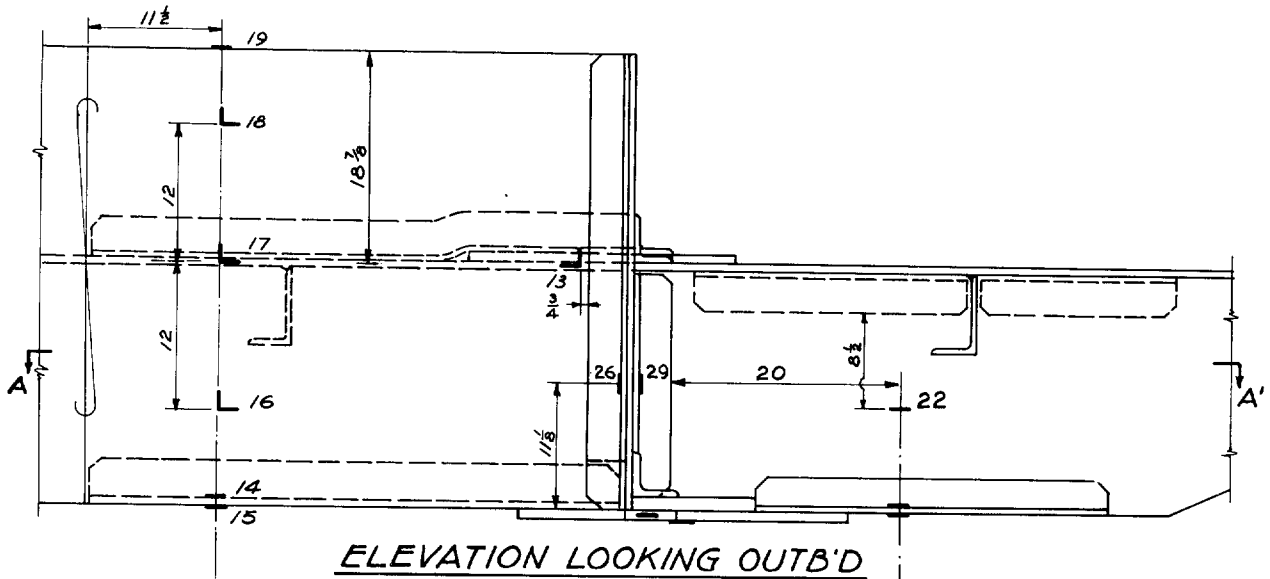
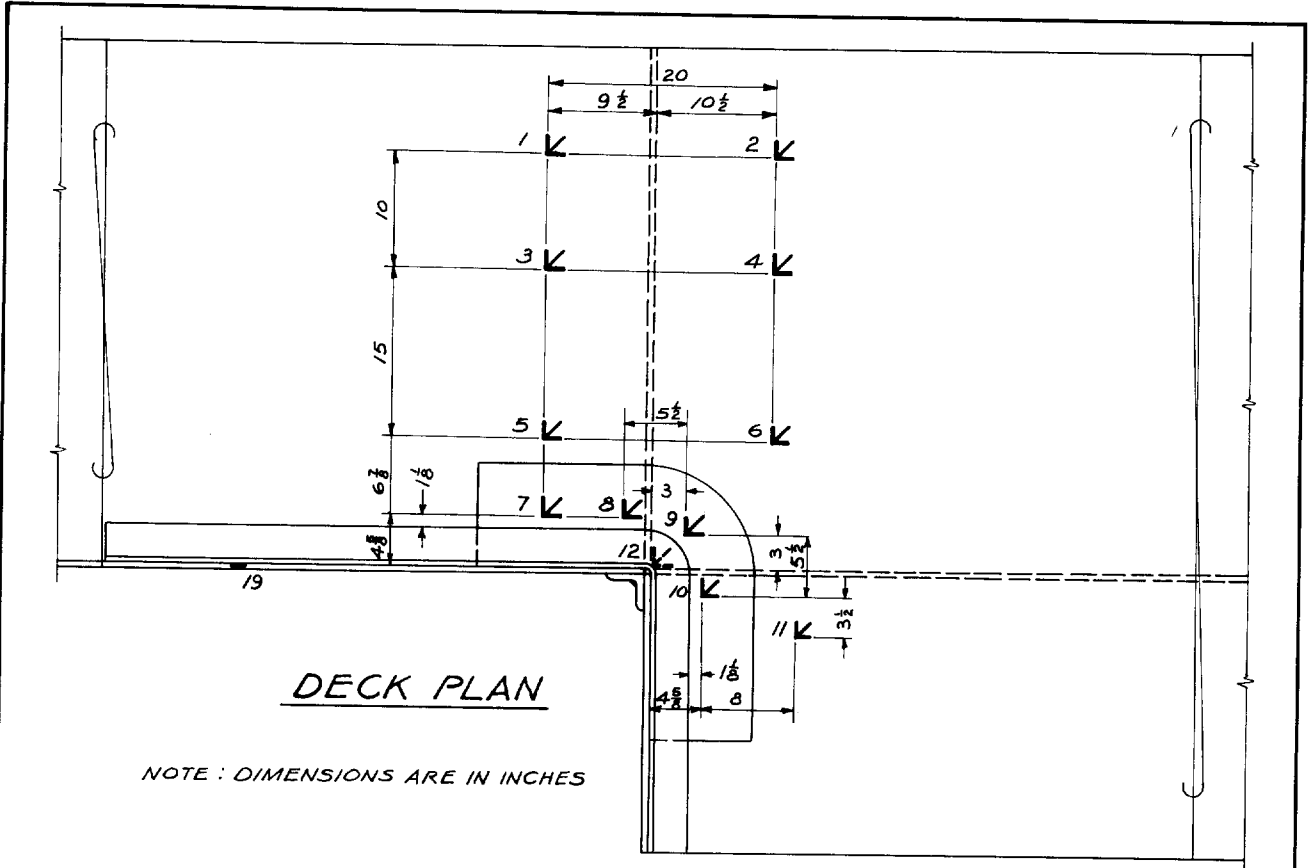
FIGURE 4 - TRANSVERSE RESTRAINING BEAMS



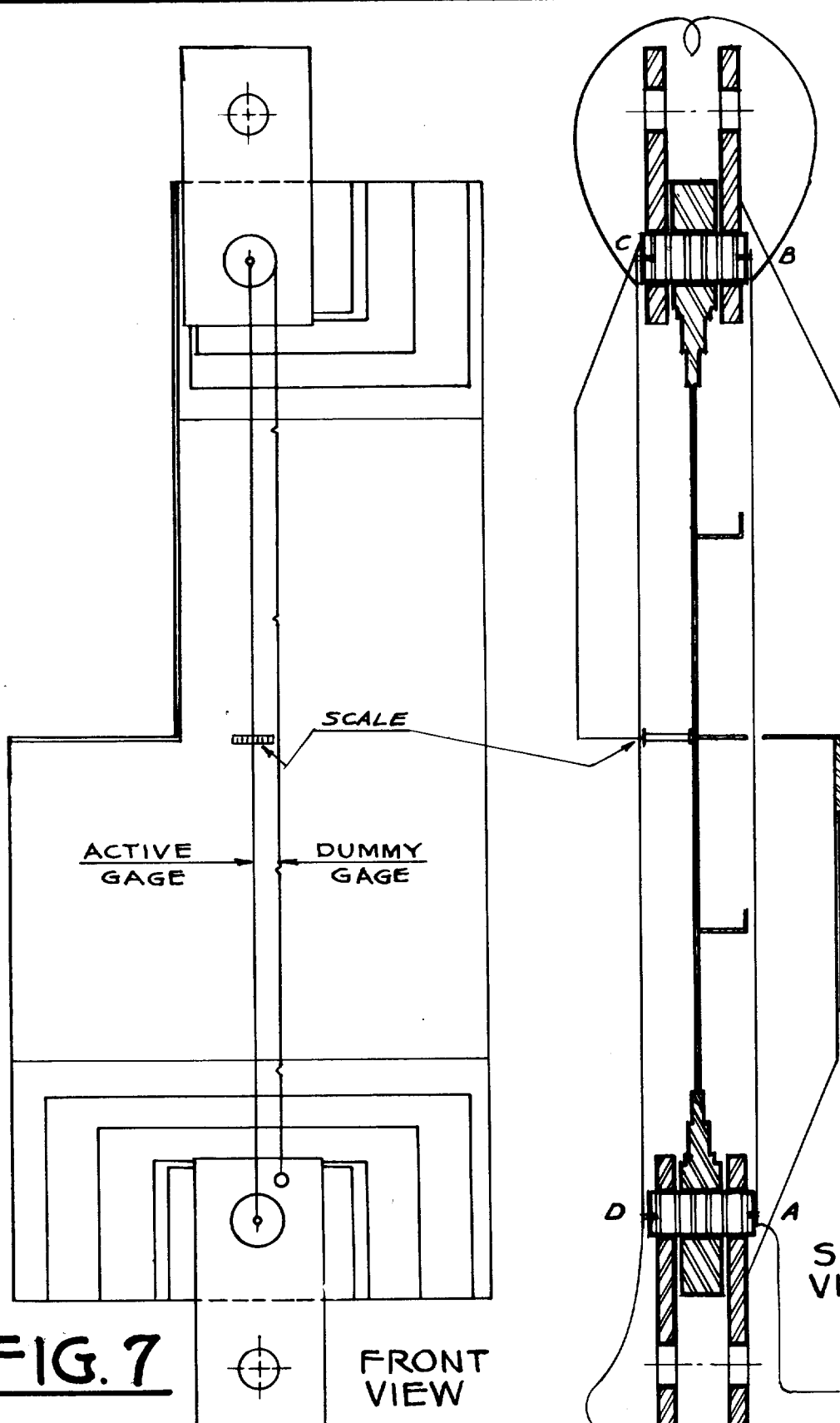
DECK PLAN  
SCALE 3/4" = 1'-0"

GAUGE LAYOUT  
FOR  
FULL SCALE HATCH CORNER  
SPECIMEN

**FIG. 5**



|   |  |                       |               |
|---|--|-----------------------|---------------|
| UNIVERSITY OF CALIFORNIA<br>WELDING RESEARCH<br>BERKELEY, CALIFORNIA. | <b>GAGE LAYOUT OF<br/>RIVETED<br/>SPECIMEN</b> | DR. BY R.C.S. 3/29/46 | <b>FIG. 6</b> |
|   |  | CHK. BY <i>W.H.H.</i> | DWG. NO.      |
|   |  | APPVD. <i>F.P.A.</i>  | R-306         |



**FIG. 7** FRONT VIEW

NOTE: GAGES MADE FROM 8 MIL. MANGANIN WIRE. GAGE WIRE AB CONNECTED IN SERIES WITH GAGE WIRE CD. DUMMY WIRE HANGS LOOSE ALONGSIDE GAGE WIRE FOR AC-CURATE TEMPERATURE COMPENSATION. ALL STRAIN OCCURS WITHIN THE PLASTIC REGION OF THE GAGE WIRE. DUE TO INITIAL STRETCH GIVEN THE WIRE WHEN ATTACHED TO INSULATED CONNECTORS AT A,B,C,D.

SIDE VIEW

TO STRAIN INDICATOR

**DEVICE FOR MEASURING TOTAL PIN TO PIN STRAIN-FOR ENERGY CALCULATION**