

FIG. 28 LOAD-STRAIN CURVES SPECIMEN 17

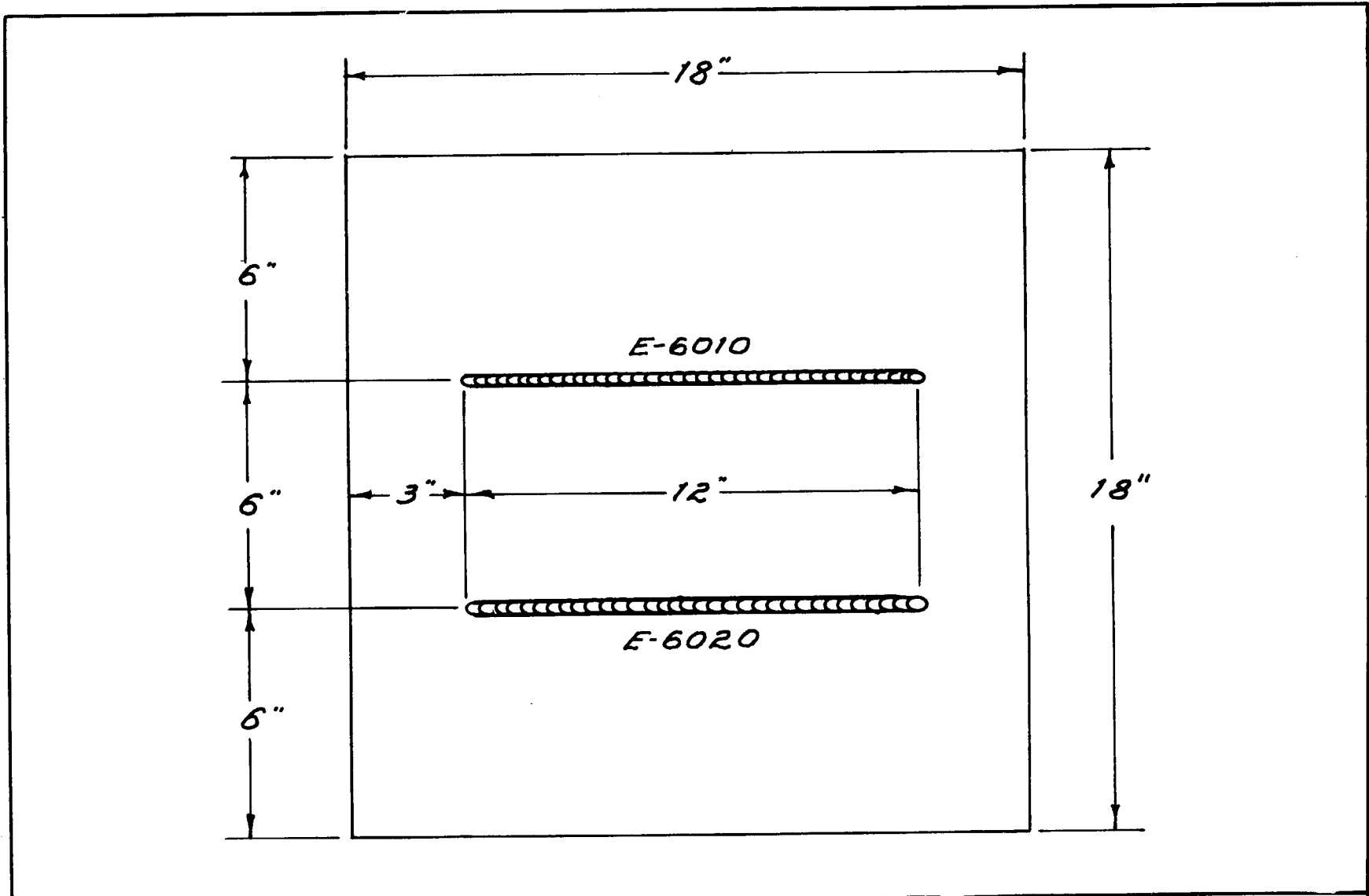


FIG. 29 $\frac{3}{4}$ " PLATE SPECIMEN USED FOR DEPOSITION OF WELD BEADS

R-329

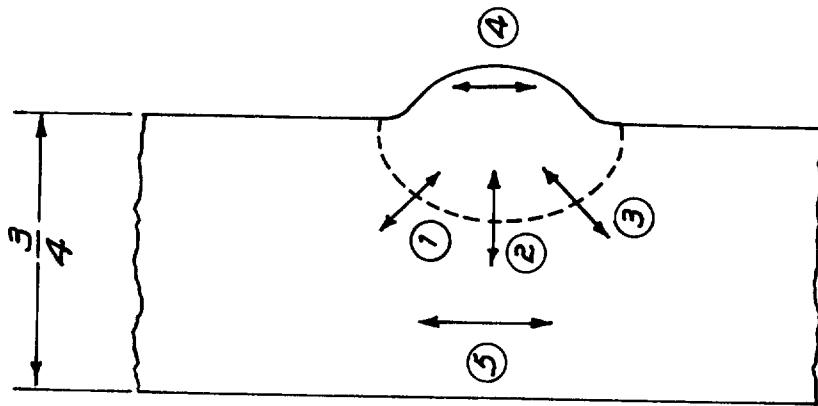
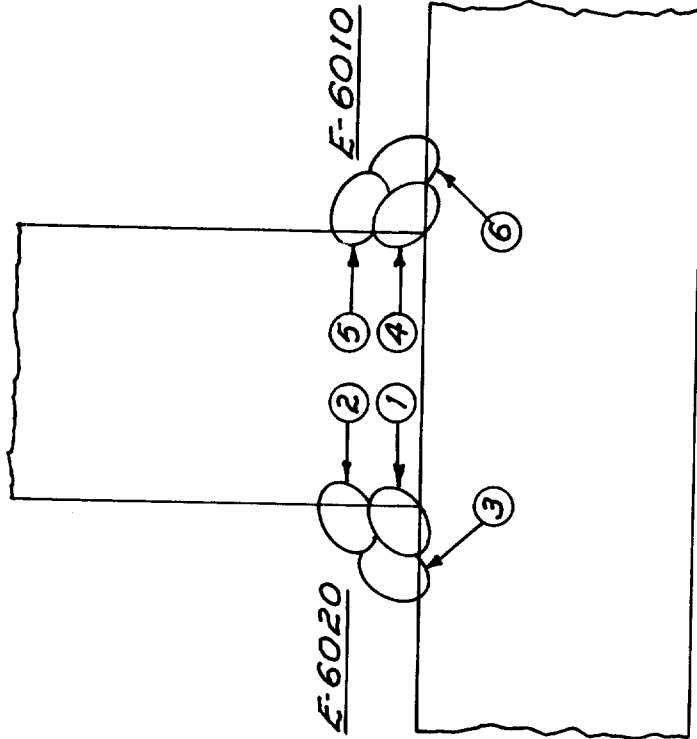


FIG. 30 MICROHARDNESS SURVEYS RUN ON EACH SPECIMEN

A-330-1

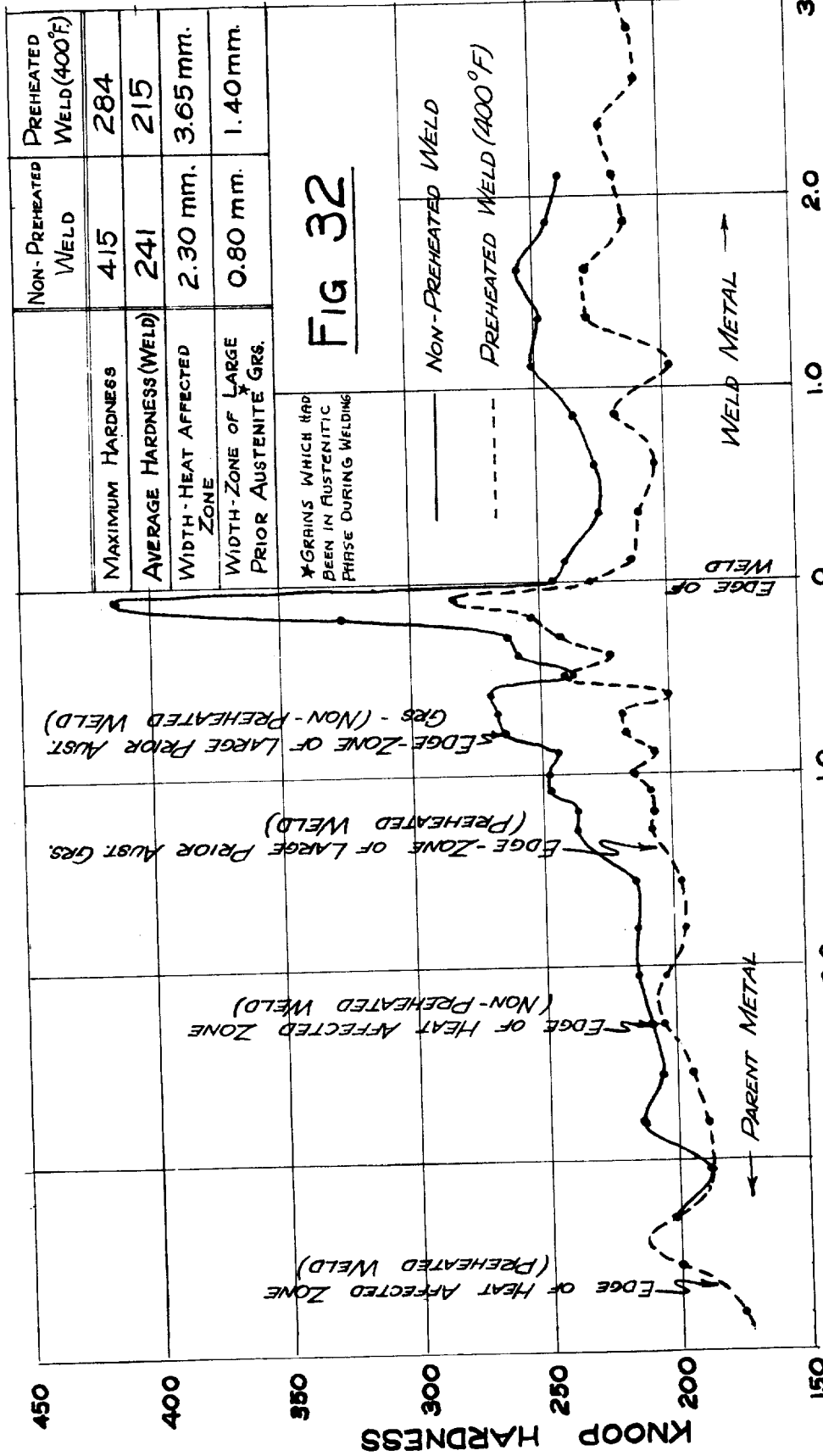


NOTE: NUMBERS REFER TO ORDER OF PASSES; PLATE COOLED TO 70°F BETWEEN EACH PASS

FIG. 31 MULTIPASS SPECIMEN

JWH-4/15/46

R-332



TYPICAL MICROHARDNESS SURVEYS ACROSS PREHEATED AND NON-PREHEATED WELDS (E-6010 ELECTRODE)

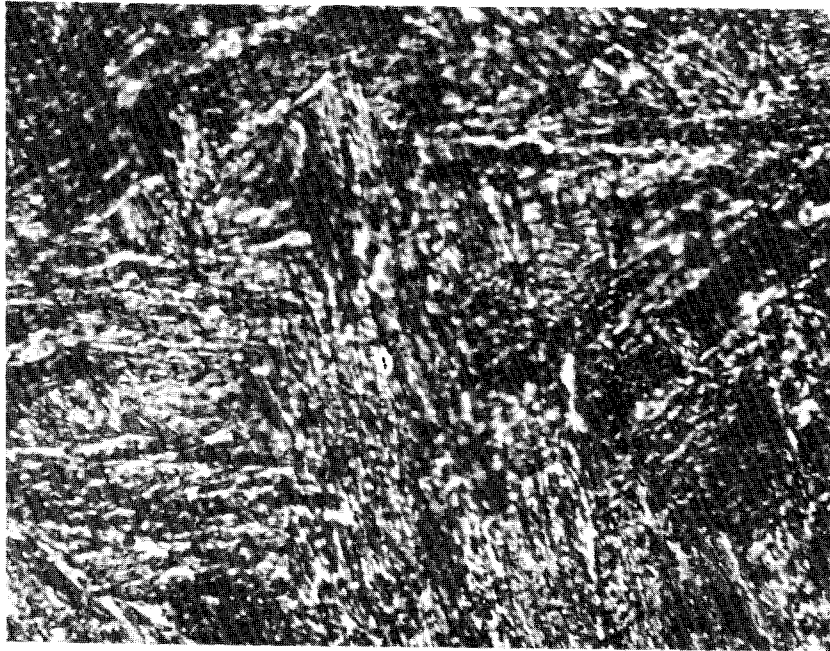


FIG. 33: HEAT AFFECTED ZONE, NON-PREHEATED WELD,
E-6020 ELECTRODE, KNOOP HARDNESS 320, X1500

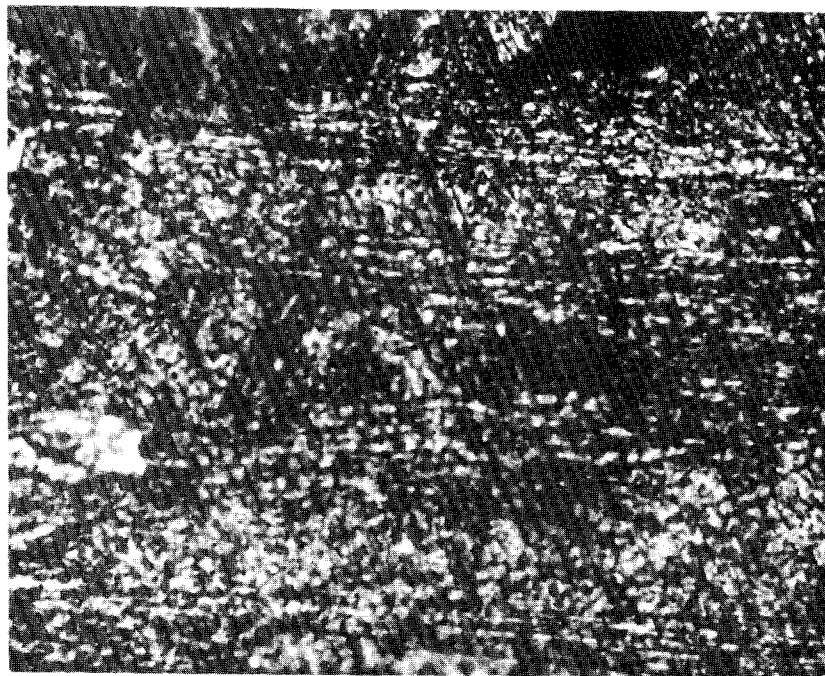


FIG. 34: HEAT AFFECTED ZONE, PREHEATED WELD, E-6020
ELECTRODE, HATCH CORNER SPECIMEN 15,
KNOOP HARDNESS 300, X1500.