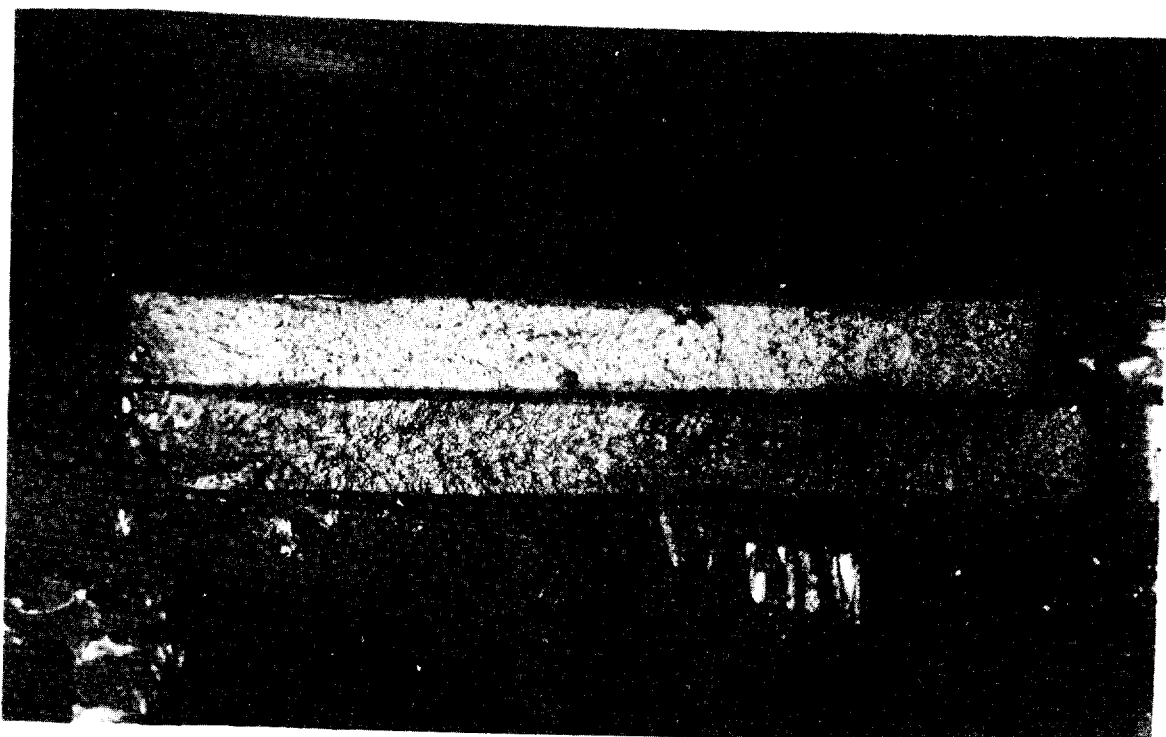


View of corner - after failure



Deck and doubler fracture patterns - looking aft

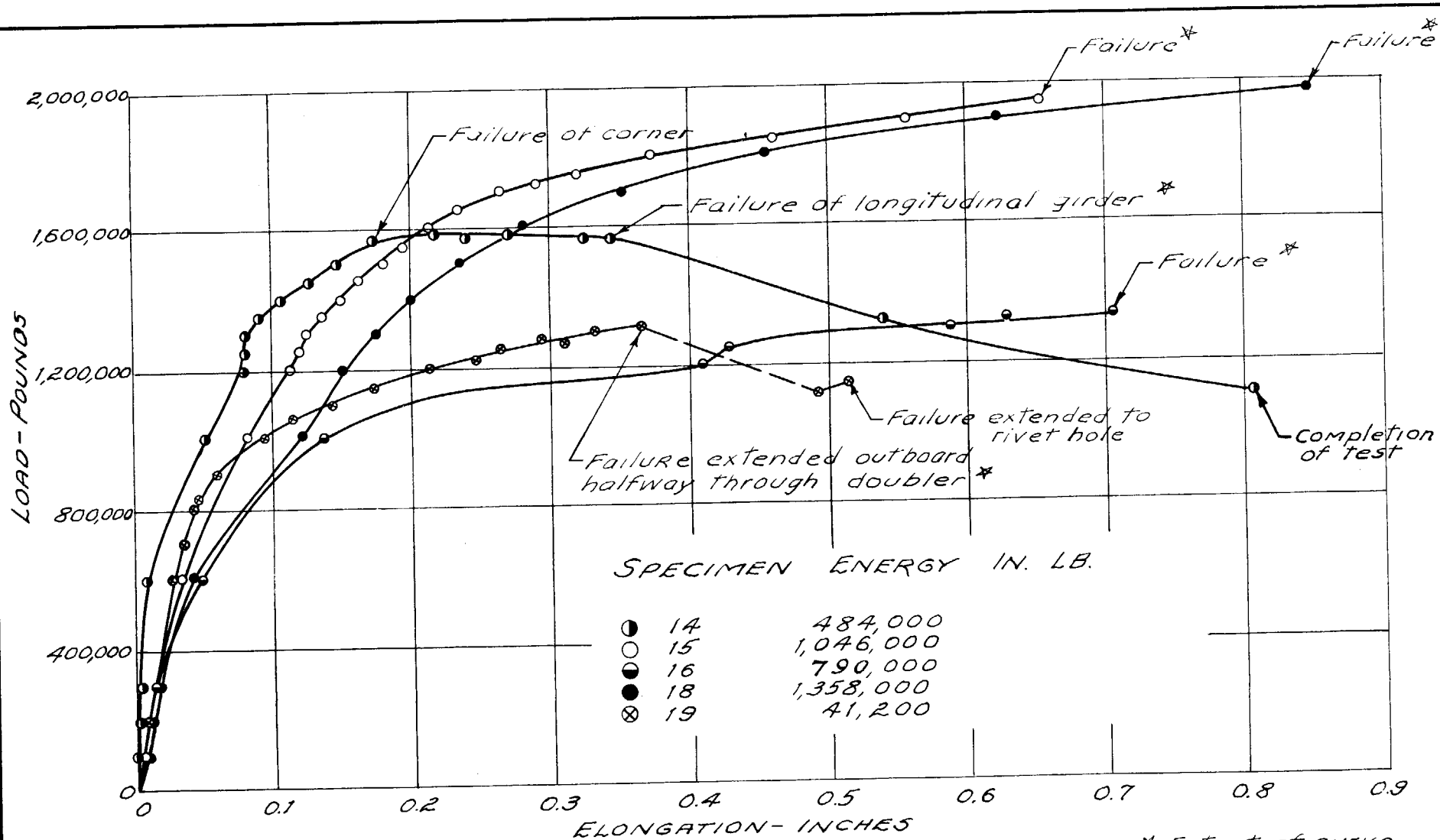
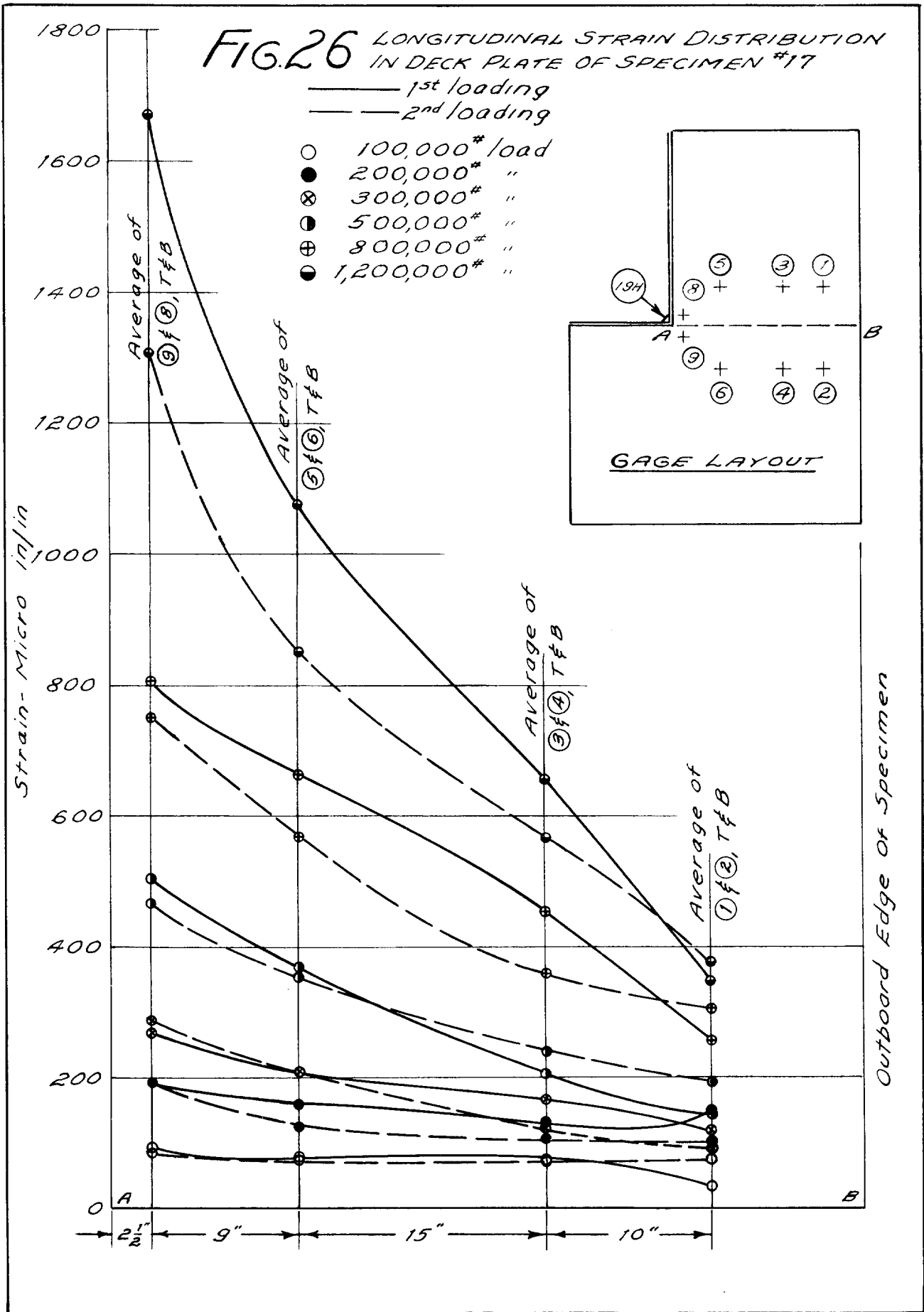
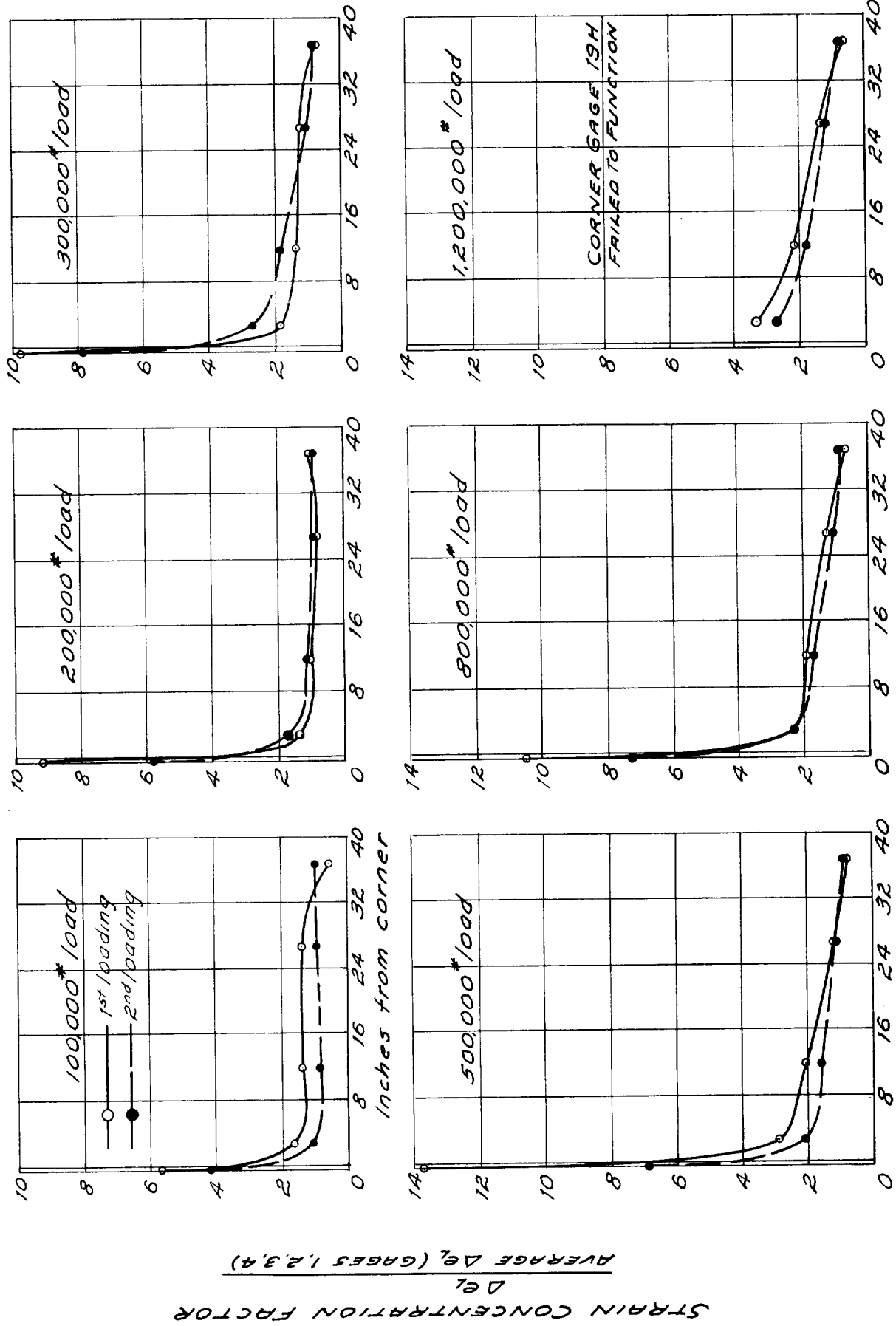


FIG. 25 LOAD ELONGATION CURVES
(PIN TO PIN MEASUREMENTS).

* Extent of curve used for energy calculations





STRAIN CONCENTRATION FACTOR
 $\Delta \epsilon / \Delta \epsilon_1$
 AVERAGE $\Delta \epsilon_1$ (GAGES 1,2,3,4)

NOTE: For gage layout, see Fig. 26

FIG. 27 STRAIN CONCENTRATIONS IN DECK PLATE, SPECIMEN 17