

Descarga Electrostática

Rev. 1

Curso Electrónica Fundamental

Fernando Silveira

Instituto de Ingeniería Eléctrica

Contenido

- ◆ Causas, Impacto
- ◆ Protecciones

Origen: “triboelectricidad”

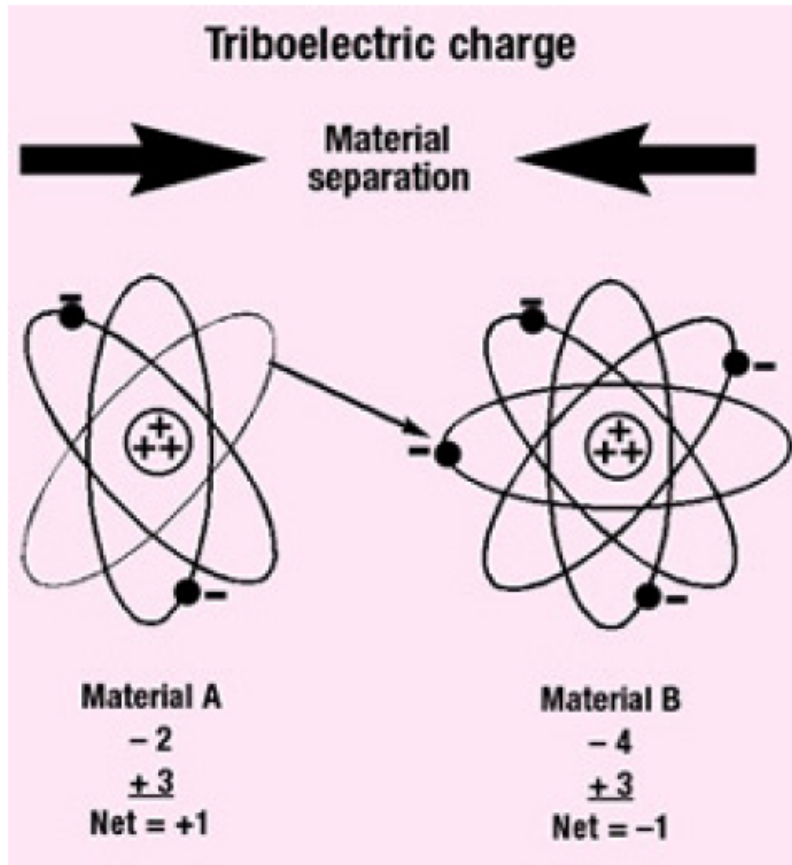


Figure 2. The triboelectric charge when two materials placed in contact are then separated.

Positive	Acetate
	Glass
	Nylon
	Wool
	Lead
	Aluminum
	Paper
	Cotton
	Wood
	Steel
Negative	Nickel
	Copper
	Rubber
	Polyester
	PVC
	Silicon
	Teflon

Table III. Typical triboelectric series.

Tensiones resultantes

Typical Voltage Levels at Different Relative Humidities

Means of Generation	0—25% RH	65—90% RH
Walking across carpet	35,000 V	1500 V
Walking across vinyl tile	12,000 V	250 V
Worker at bench	6000 V	100 V
Poly bag picked up from bench	20,000 V	1200 V
Chair with urethane foam	18,000 V	1500 V

Table II. Examples of static generation.

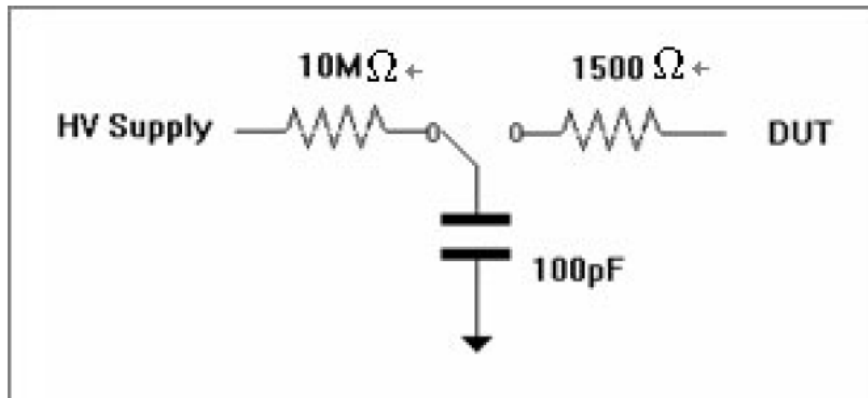
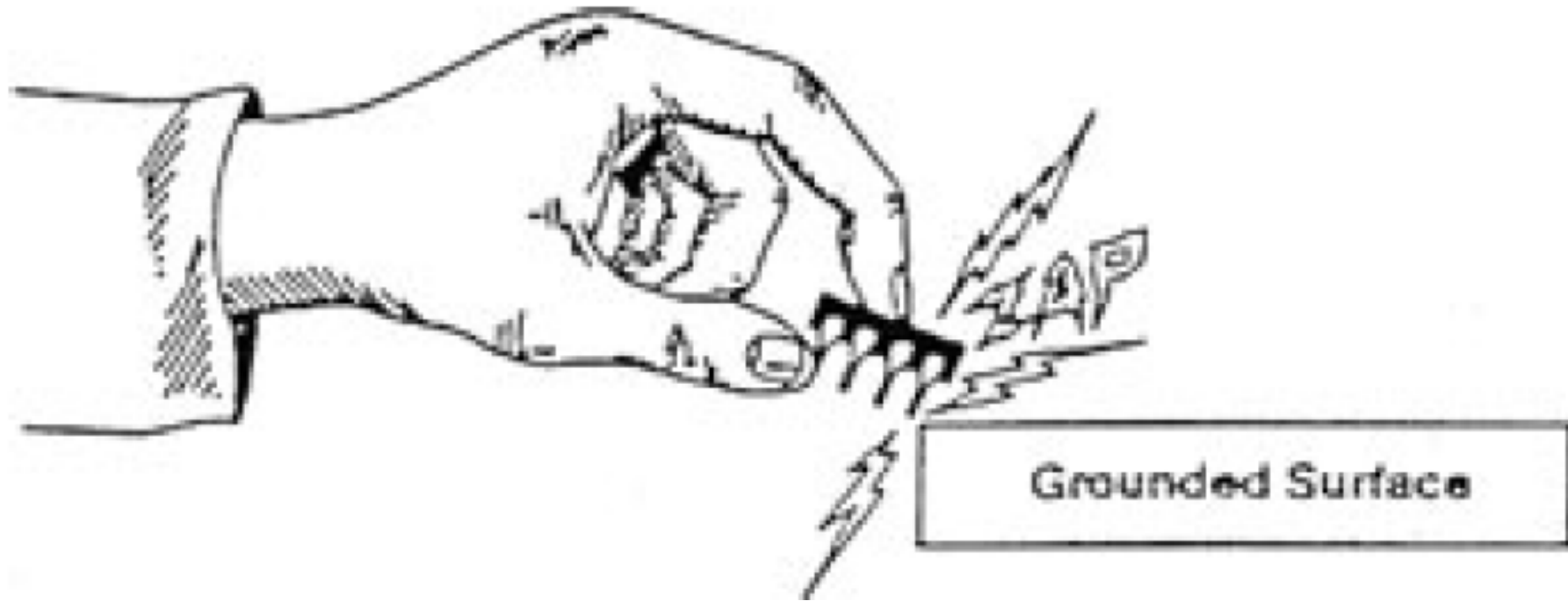
Fuente: www.esdproducts.eu

Modelos de la descarga y niveles de tolerancia de los circuitos

ESD Model	ESD Classification	Voltage Range
Human Body Model (HBM)	0	0V – 249V
	1A	250V – 499V
	1B	500V – 1999V
	1C	1000 – 1999V
	2	2000 – 3999V
	3A	4000 – 7999V
	3B	>= 8000V
Machine Model (MM)	M1	0V – 100V
	M2	101V – 200V
	M3	201V – 400V
	M4	401V – 800V
	M5	>800V
Charged Device Model (CDM)	C1	0V – 124V
	C2	125V – 249V
	C3	250V – 499V
	C4	500V – 999V
	C5	1,000V – 1,499V
	C6	1,500V – 2,999V
	C7	>= 3,000V

Fuente: MiniCircuits AN40-005

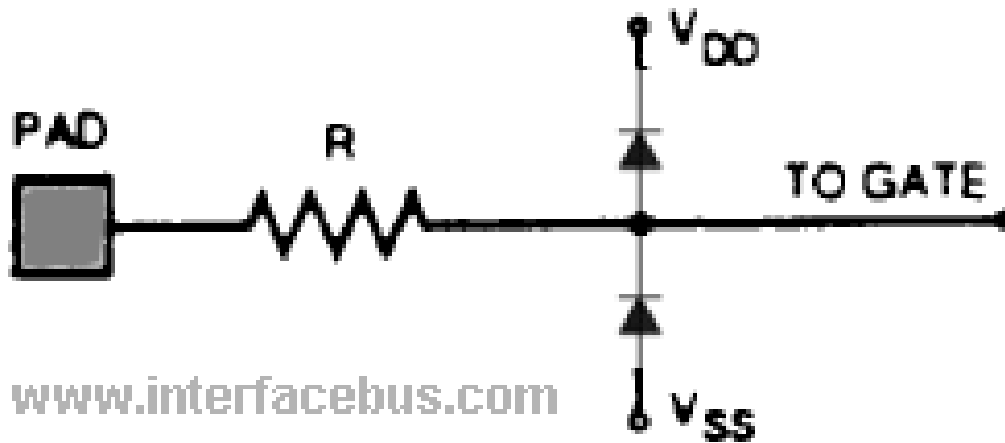
Ej. Human Body Model



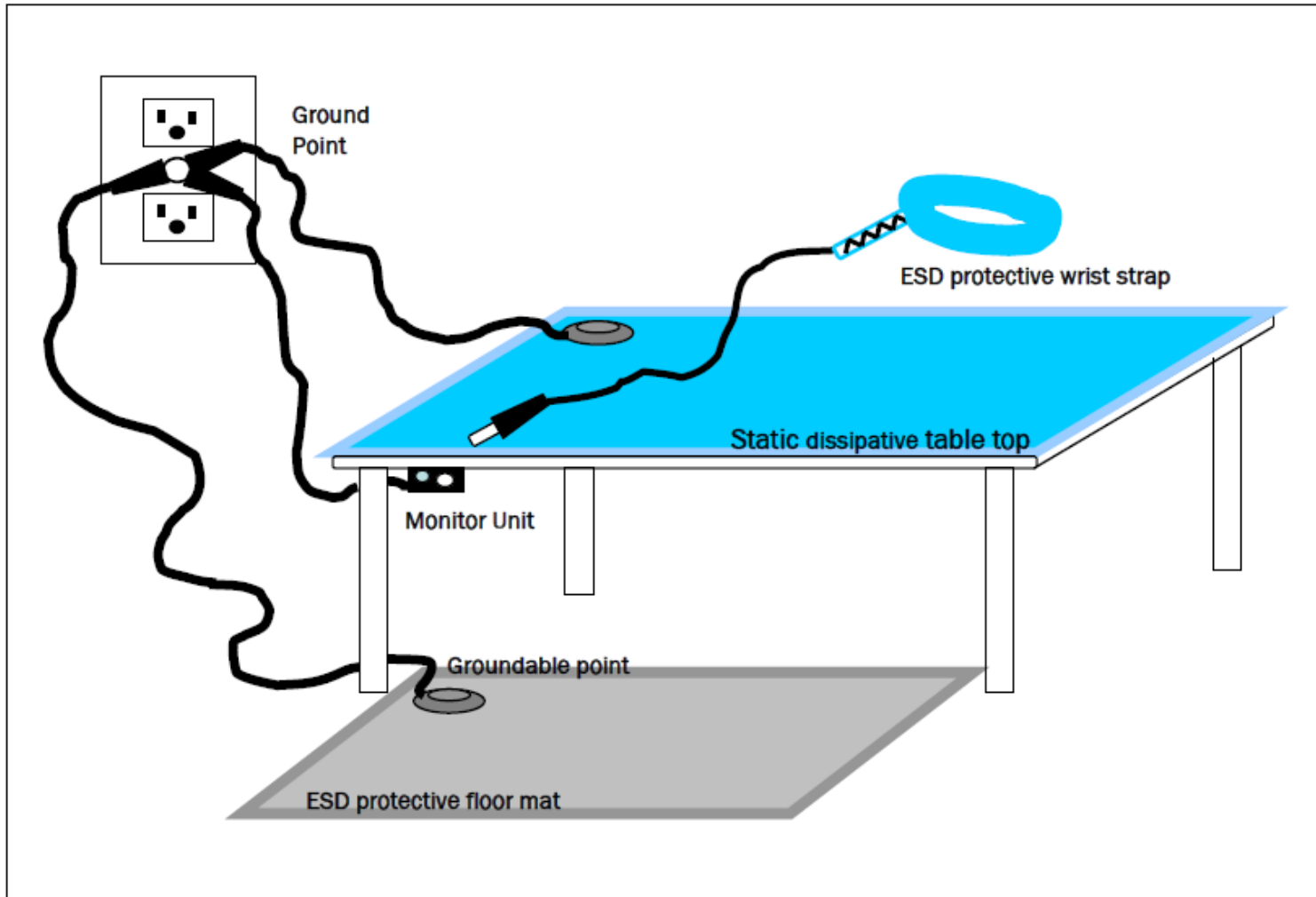
Human Body Model (HBM) test circuit

Fuente: comchiptech.com

Proteccion básica en el circuito

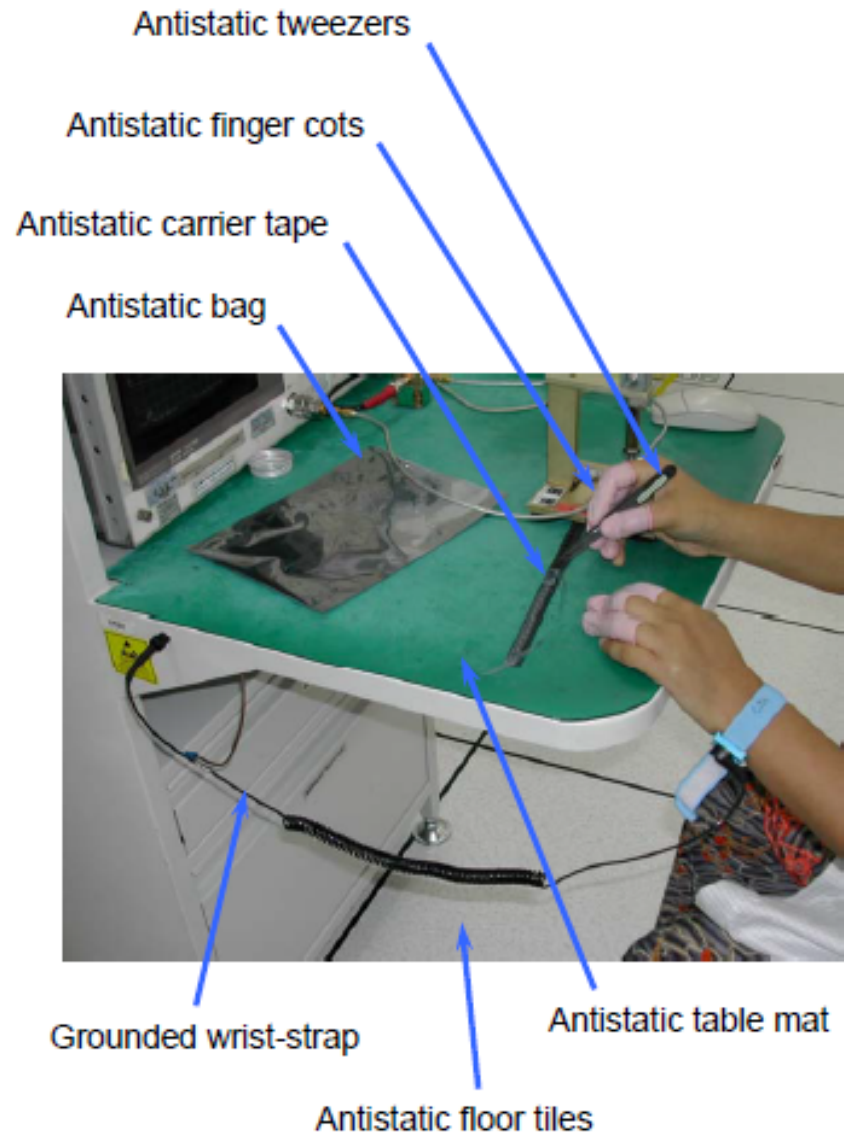


Protección en el manejo



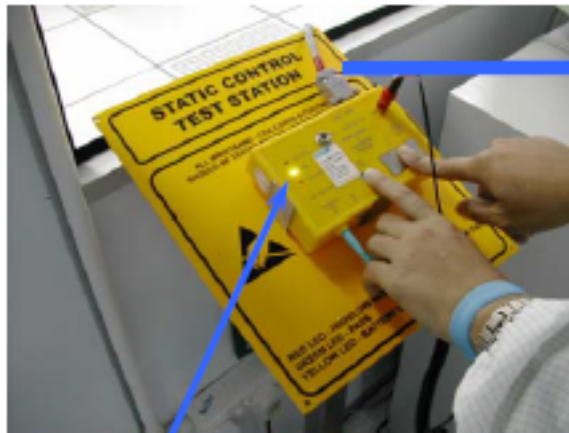
Fuente: MiniCircuits AN40-005

Proteccion en el manejo



Fuente: MiniCircuits AN40-005

Protección en el manejo



A green test indicator light means the wrist-strap is worn properly and is working as intended. This picture shows the configuration for testing wrist-straps. The test station can also be configured to test antistatic footwear.



Protección en el manejo

Labels to identify electrostatic discharge sensitive (ESDS) devices.

The following labels are commonly used on containers and packaging to alert anyone who handles the ESDS devices on the need to use static-safe procedures before handling the devices. The one on the left is preferred.



The following verbiage should be placed beside the label:

CAUTION
Contains parts and
assemblies susceptible to damage by
Electrostatic Discharge (ESD)