

Course content for UrGe4Hy: GAMS & VEDA Installation

Hardware & Software recommendations:

Veda2.0 works on Windows portables, desktops, servers, and VMs, with Windows 8/Windows server 2012 or above. Microsoft Excel is a prerequisite.

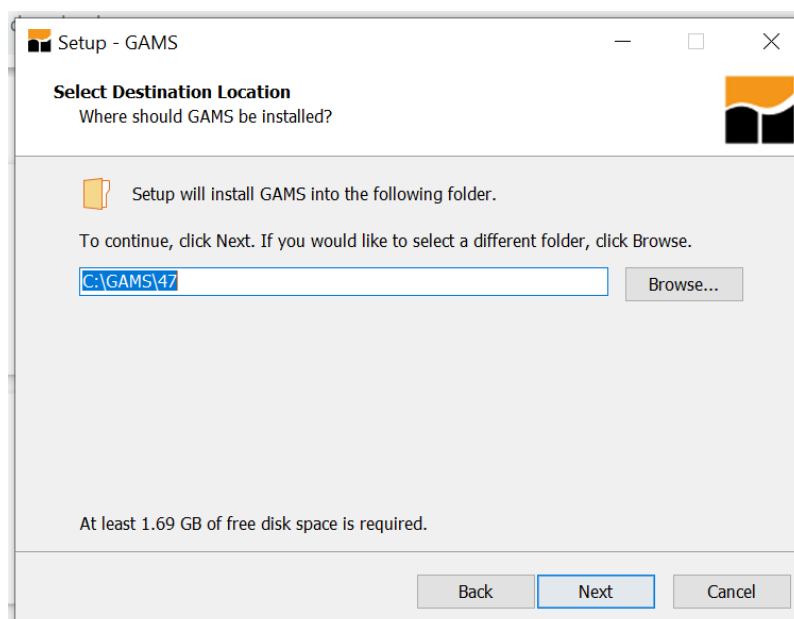
- CPU: Minimum 4 cores are recommended for STANDARD and ADVANCED licenses. 8 - 16 would be desirable for larger models
- RAM: 4-8 GB is enough for Veda, but GAMS needs more RAM for larger models. 32 GB would accommodate most models
- HDD: 500GB - 1TB free space for Veda and GAMS files

Installations involved:

1. GAMS (General Algebraic Modeling System)
2. VEDA2.0 (VErsatile Data Analyst)

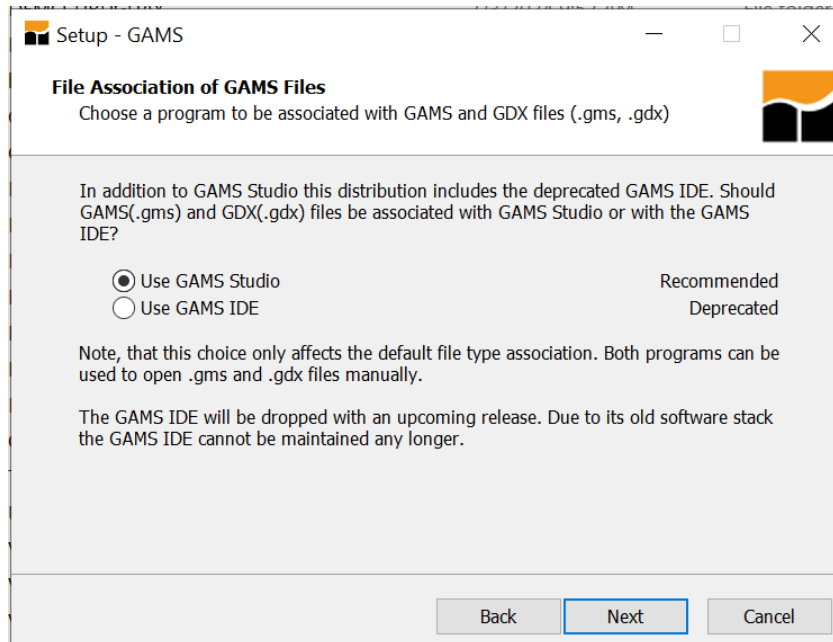
1. GAMS:

1. Download respective GAMS release for your PC (Win- 64/32 bit) from:
<https://www.gams.com/download/>
2. Run the downloaded Setup from the Windows Explorer
 - a. Check “Use advanced installation mode” at the bottom of the GAMS setup form
 - b. Let GAMS be installed into the default folder (\GAMS \<Win#>\<ver>)

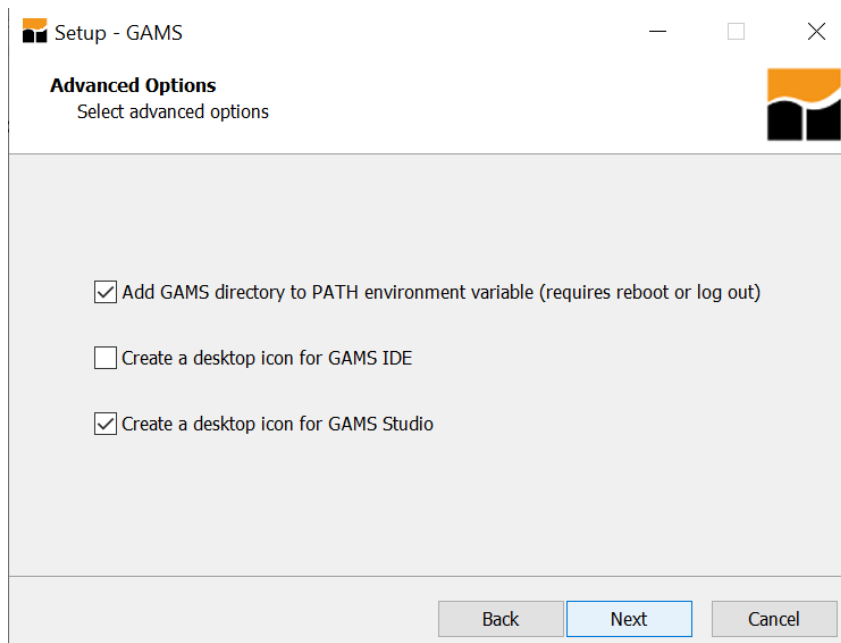




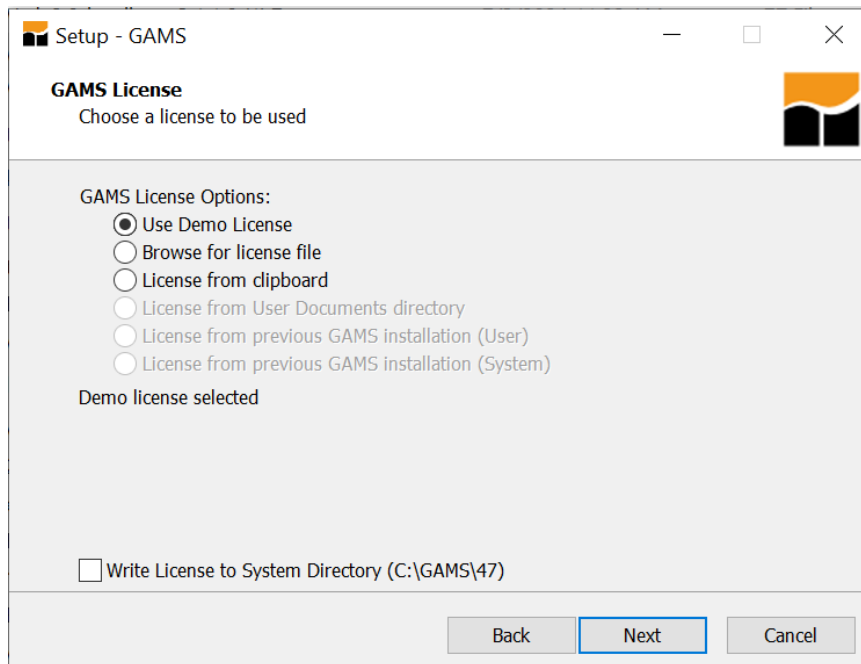
c. Use recommended GAMS Studio installation



d. Verify and add GAMS directory PATH environment variable.



e. Select "Use Demo License"



3. Restart your PC
4. Check installation:
 - a. Open command prompt (Win+r -> "cmd")
 - b. Type "gams" to see if it is recognised

```
C:\Users\ac141827>gams
--- Job ? Start 07/02/24 17:56:47 40.4.0 d540b52e WEX-WEI x86 64bit/MS Windows
***
*** GAMS Base Module 40.4.0 d540b52e Oct 3, 2022 WEI x86 64bit/MS Window
***
*** GAMS Development Corporation
*** 2751 Prosperity Ave, Suite 210
*** Fairfax, VA 22031, USA
*** +1 202-342-0180, +1 202-342-0181 fax
*** support@gams.com, www.gams.com
***
*** GAMS Release : 40.4.0 d540b52e WEX-WEI x86 64bit/MS Windows
*** Release Date : Oct 3, 2022
*** To use this release, you must have a valid license file for
*** this platform with maintenance expiration date later than
*** Aug 01, 2022
*** System Directory : C:\GAMS\40\
***
*** License : C:\Users\ac141827\Documents\GAMS\gamslice.txt
*** Medium MUD - 10 User License S220311|0002A0-WIN
*** University of Stuttgart, IER
*** DC848 01M5COGPTCPXPD1
*** License Admin: laura.torralba-diaz@ier.uni-stuttgart.de
***
*** Licensed platform : x86 32bit MS Windows 32 and 64bit
*** The installed license is valid.
*** Maintenance expiration date (GAMS base module): Apr 05, 2023
*** Note: For solvers, other expiration dates may apply.
*** Run gamslib model licememo for more details.
*** Status: Normal completion
--- Job ? Stop 07/02/24 17:56:47 elapsed 0:00:00.006

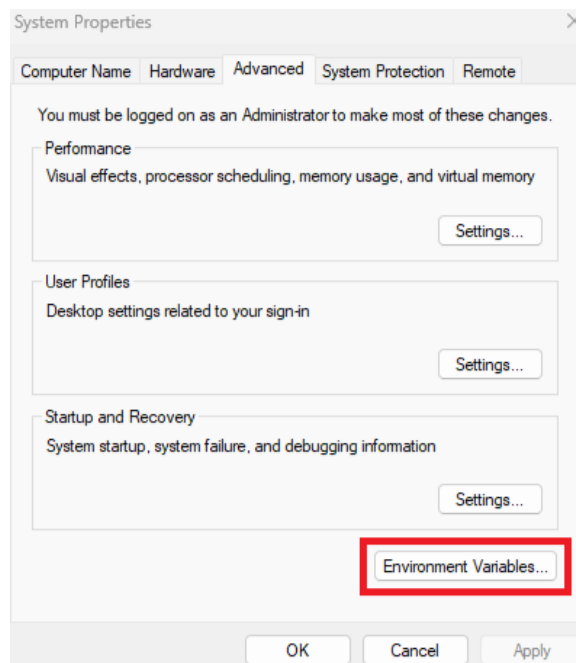
C:\Users\ac141827>
```

- c. Type "path" to check if the installation directory is present in it

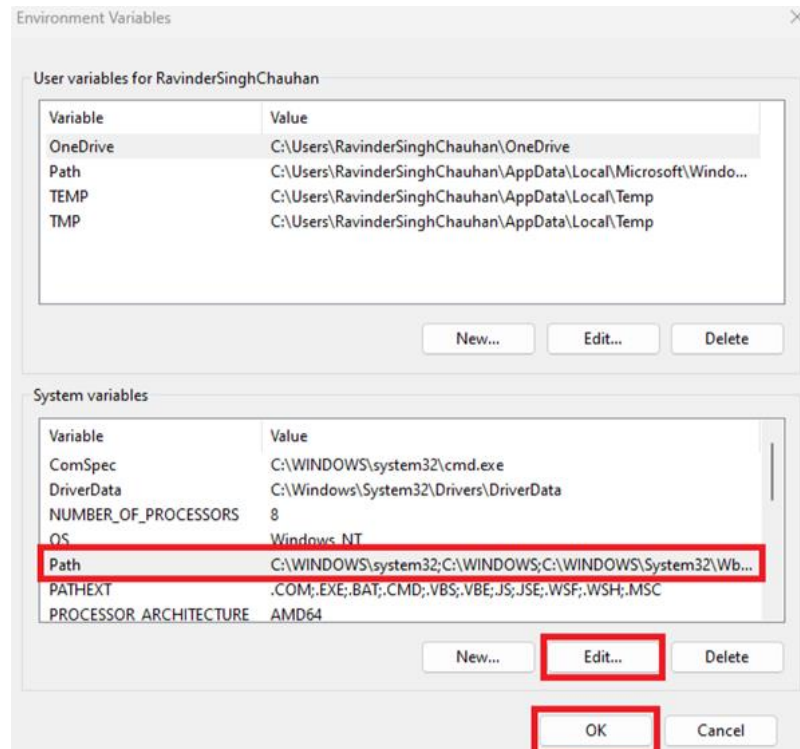


```
C:\Users\ac141827>path
PATH=C:\WINDOWS\system32;C:\WINDOWS;C:\WINDOWS\System32\Wbem;C:\WINDOWS\System32\WindowsPowerShell\v1.0\;C:\WINDOWS\System32\OpenSSH\;C:\GAMS\48;C:\GAMS\48\gbn;C:\Users\ac141827\AppData\Local\Microsoft\WindowsApps;C:\Users\ac141827\AppData\Local\GitHubDesktop\bin;C:\Users\ac141827\AppData\Local\Programs\Git\cmd;
C:\Users\ac141827>
```

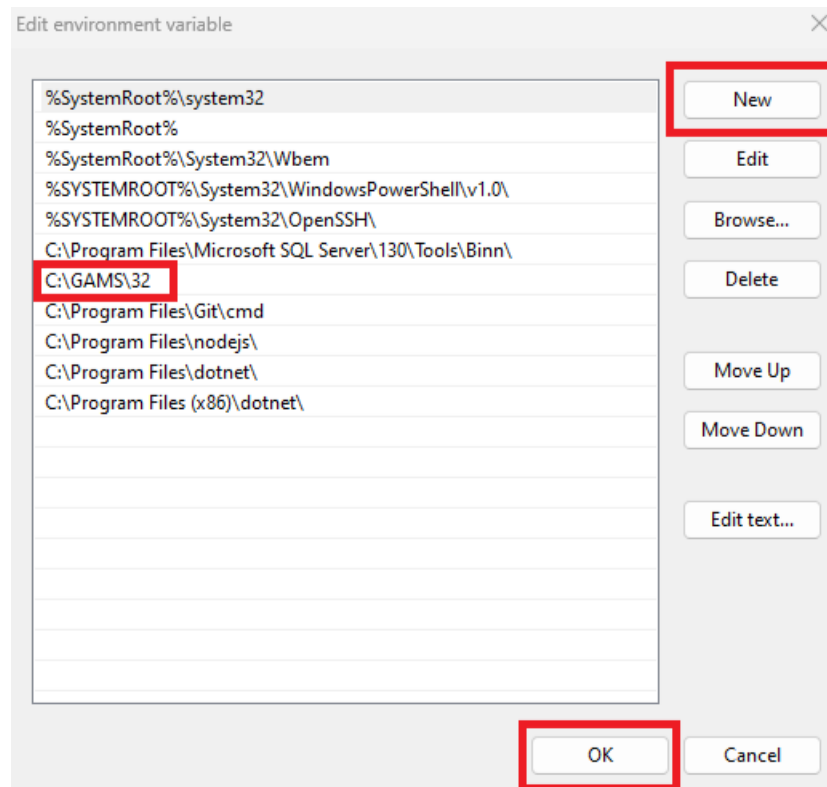
- d. If either of these [(b) or (c)] do not appear, follow the steps:
 - i. Supposing your installation directory is: C:\GAMS\32
 - ii. Search/open “system environment variables” (Right click on My Computer/This PC -> Properties -> Advanced System Settings)
 - iii. Go to “Advanced” tab, click on “Environment Variables”



- iv. Click on the “Path” and “Edit”



- v. Click on “New” and add the GAMS directory path (C:\GAMS\32) to the list



- vi. You may need to restart to see GAMS listed in the PATH in the CMD
- e. Open cmd, type “gams trnsport” to run a demo LP problem
 - i. Check if objective value matches 153.675



```
Iteration      Dual Objective      In Variable      Out Variable
  1             73.125000      x(seattle,new-york) demand(new-york) slack
  2            119.025000      x(seattle,chicago) demand(chicago) slack
  3            153.675000      x(san-diego,topeka) demand(topeka) slack
  4            153.675000      x(san-diego,new-york) supply(seattle) slack

--- LP status (1): optimal.
--- Cplex Time: 0.02sec (det. 0.01 ticks)

Optimal solution found
Objective:      153.675000

--- Reading solution for model transport
--- Executing after solve: elapsed 0:00:00.131
--- trnsport.gms(66) 4 Mb
```

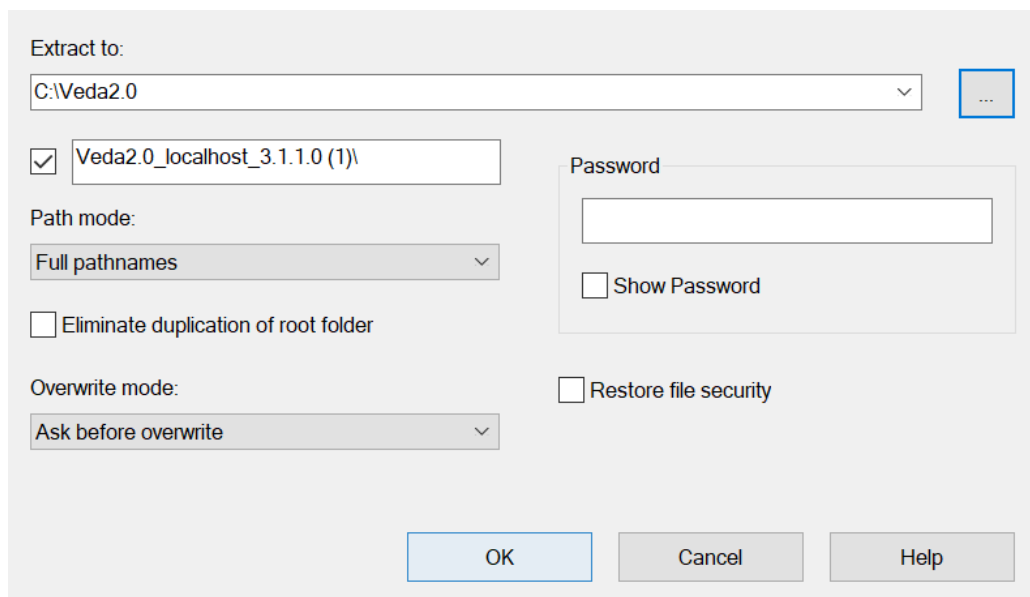
2. VEDA2.0:

Two options of installation (1, recommended) Localhost, (2) executable setup.

[You need to download (<https://www.7-zip.org/download.html>) and install 7zip before for the unzipping of the VEDA file]

1. Local Host installation:

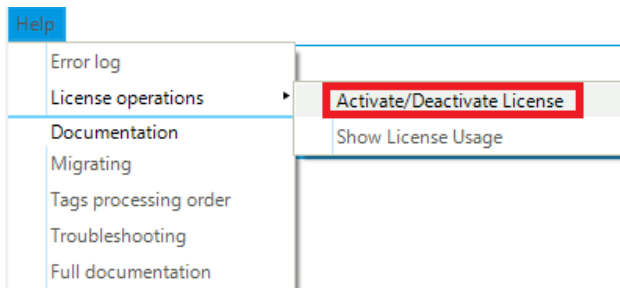
- Download and install prerequisites from: <https://github.com/kanors-emr/Veda2.0-Installation/tree/master/Localhost%20Version%20Prerequisites>
- Download Veda2.0 from: <https://github.com/kanors-emr/Veda2.0-Installation/releases/tag/v3.1.1.0> (Veda2.0_localhost_3.1.1.0.7z; ~72 MB)
- Unzip the file and copy contents to C:\Veda2.0 (~1.5 GB)



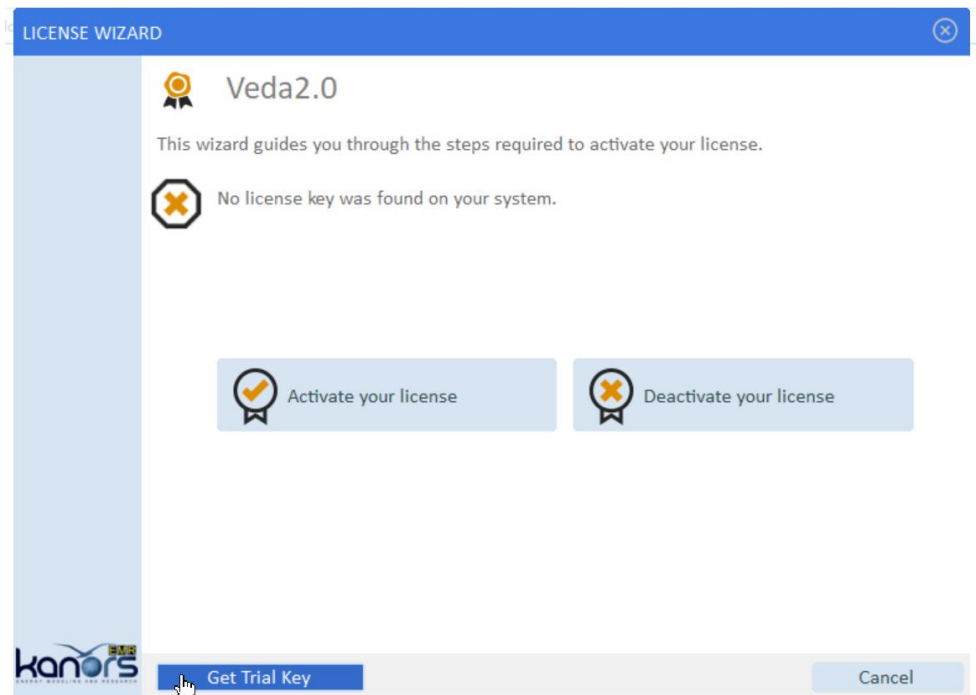
Start the application from the unzipped folder (C:\Veda2.0\Veda2.0_localhost_2.7.1.1) -> **Veda2.0.exe**

Getting a trial license:

1. Once you have Veda2.0 open, follow: “Help” -> “License operations” -> “Activate/Deactivate License”



2. Select “Get Trial Key”



3. Follow the link and fill in the required details to get the trial license key through your email.



First Name

Last Name

abc@xyz.com

Organization

Address (as you would need to see on the invoice)

City

Afghanistan

Installing trial license key

Submit

4. After obtaining the key insert it through step (1) above and selecting “Activate your license”, followed by “Activate Online”.

LICENSE WIZARD

Activation Method

Select the operation you want to perform. If you are connected to the internet, you can activate your license automatically online. Otherwise, select to Activate Offline.

Activate Online

Activate Offline

Get Trial Key

< Back

Cancel

5. Insert your obtained trial license key and select “Activate license key”



LICENSE WIZARD

Activate Online

Enter your Activation Key below and click Activate. The License Wizard will then connect to the Internet to activate your license.

Activation Key

Proxy Settings Activate license key

The license key BMUP0-R0900-GHJ21-K8NBQ-1S1T1-18P6U-QJIGV-MYTQYHR4 needs to be activated.

kanors

< Back Cancel

That's it, now you're ready to start using VEDA!

Post-installation bugs:

- Veda makes a local connection to a PostgreSQL database. In case you see “No database response” message on Veda startup and it does not go away, please make sure that the system firewall is not blocking Veda in making the said connection (This could require permissions from your IT department).
- Veda uses Excel in background and in case of any pending popups in Excel that require user attention, Excel will not work which in turn will stop Veda to carry out important processes like synchronization of model. One such popup is the user sign-in popup, so we advise user to make sure they are signed in to Excel properly.

All useful links:

- <https://veda-documentation.readthedocs.io/en/latest/pages/Getting%20started.html#installation>
- <https://github.com/kanors-emr/Veda2.0-Installation>
- <https://veda-documentation.readthedocs.io/en/latest/pages/License%20operations.html>